



HUMMEL SPORT

HUMMEL
SPORT
2018



hummel®

Size Chart

Textile Children

EU year/cm	4/104	5/110	6/116	7/122	8/128	9/134	10/140	11/146	12/152	13/158	14/164	15/170	16/176
US year	4 Y		6 Y		YS/ 8 Y		10 Y		YM/12 Y		14 Y		YL/16 Y
ASIA cm	104	110	116	122	128	134	140	146	152	158	164	170	176

Textile Adults

EU	XS	S	M	L	XL	XXL	XXXL	XXXXL
US	XXS	XS	S	M	L	XL	XXL	XXXL
ASIA	S	M	L	XO	XXO	XXXO	XXXXO	XXXXXO

Footwear Children

UK	4	5	6	7	8	9	10	11	11 ½	12	13	1	2	2 ½	3 ½	4	5
US	6	7	8	9	9 ½	10	11	12	12 ½	13	1	2	2 ½	3 ½	4	5	6
EU	22	23	24	25	26	27	28	29	30	31	32	33	34	35	36	37	38
JAPAN	12	13	14	15	16	16 ½	17	17 ½	18	19	20	21	21 ½	22	22 ½	23	24
KOREA													215	220	225	230	240

Footwear Adult

UK	3 ½	4	4 ½	5	5 ½	6	6 ½	7	7 ½	8	8 ½	9	9 ½	10	10 ½	11	11 ½	12	12 ½	13	14	15	
USM	4 ½	5	5 ½	6	6 ½	7	7 ½	8	8 ½	9	9 ½	10	10 ½	11	11 ½	12	12 ½	13	13 ½	14	15	16	
USL	5	5 ½	6	6 ½	7	7 ½	8	8 ½	9	9 ½													
EU	36	37	37 ½	38	38 ½	39	40	40 ½	41	42	42 ½	43	44	44 ½	45	46	46 ½	47	48	48 ½	49 ½	51	
JAPAN	22 ½	23	23 ½	24	24 ½	25	25 ½	26	26 ½	27	27 ½	28	28 ½	29	29 ½	30	30 ½	31	31 ½	32	32 ½	33	
KOREA	225	230	235	240	245	250	255	260	265	270	275	280	285	290	295	300	305	310	315				

CONTENTS

Foreword	5
The Brand History	7

Collections

Reflector Tech	8
Tech Move	18
hummel Sirius	32
Authentic Charge	40
Core	58
Goalkeeper & Referee	72
Baselayer & Training	76
Classic Bee	90
Kids Activewear	112
Socks & Accessories	118
Equipment Bags	128
Handballs	134
Footballs	140
Footwear	148

Club Profiles

DBU	160
Charlton Athletic	162
SC Freiburg	164
Aarhus United	166
Füchse Berlin	168

Sponsorships

Football Team Sponsorships	170
Handball Team Sponsorships	172
Personal Sponsorships	174
Other Sponsorships	176

Print Guide	177
BeeSpoke	178



Play 31
GIRLS PEACE CLUB WITH
SUPPORT FROM hummel
INTERNATIONAL D.K. 2016
Change The WORLD
Through SPORTS



WE'RE ON A NEW JOURNEY

DEAR HUMMEL PARTNERS,

The 2018 Sport Catalogue marks an exciting time in hummel's long and proud history. You will notice the changes in layout, visuals and text – and this is a strong reflection of the journey we're on as a brand right now. With Allan Vad Nielsen as the new CEO of the company, hummel will be further developing, continuing and building upon its relationship with all of you – our strong and important partners.

Sport is at the core of hummel. The passion it brings, the opportunities it provides, the joy it creates. Sport has always been about the social aspects for hummel – the tireless players and enthusiasts on the pitch, in the club and in the communities.

We cannot do it without close partnerships and collaborators – whether its retail partners, clubs, teams or players. This is, and

will always be, the foundation of hummel and a cornerstone in our expansion process.

We believe that we can Change The World Through Sport. This belief has been at the core of hummel for years – and will continue to be expanded. We want to be known as the world's most social sports brand – it's the distillation of all our values and foundations, and is expressed in our Company Karma strategy. This differentiates us as a sports brand, improves the quality of life for people around the world, and connects even more people through the social aspects of sport.

After all, sport is nothing without enthusiastic people. That's why we keep creating and designing new products. And as you can see on the following pages, we have worked hard to bring only the best and most enticing products to all of you – our partners.

HUMMEL BRAND HISTORY



1923

Albert Messmer develops one of the first football cleats in the world. With his brother Michael Ludwig Messmer, he founds the company Messmer & Co., that will go on to become known as hummel.

1956

The visionary Bernhard Weckenbrock takes over the company. He creates a comprehensive brand identity and introduces the chevrons.



1968

The first sponsorship deal is signed. The deal is with Duisburg, a team playing in the 2nd German Bundesliga.

1970

hummel is introduced to the Northern European market.

1969

The first sportswear collection is launched. Sponsorships are signed and help boost sales. A rounder version of the bumblebee than the current one is created.

1979

hummel signs a sponsorship deal with the Danish national team for the first time – a deal that lasts until 2004.



1988



hummel signs a sponsorship deal with Real Madrid and the club's biggest star, Emilio Butragueño. The deal makes hummel products even more popular.

1992

It's a surprising win, to say the least. The Danish national team takes the title at the European Championships having played Germany in the final.

2013

hummel celebrates its 90th birthday with the relaunch of a range of heritage styles.

1999

hummel gets a new owner – Thornico. Christian Stadil becomes part of the brand history. He launches a reintroduced, original sport style collection on the fashion market and hummel becomes a trendsetting sports apparel brand.

2016

After many years hummel once again sponsors a team in the German Bundesliga. The SC Freiburg plays a sensational first season after returning to the first league and qualifies for international competition.

2017

The Danish women's team wins silver at the Women's Euro Championship in the Netherlands, losing to the Netherlands in the final.





REFLECTOR TECH

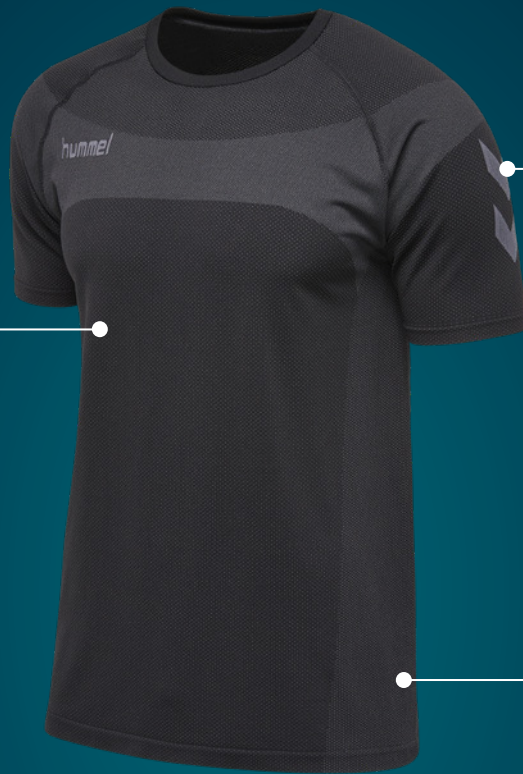
**REFLECTOR TECH
COLLECTION
RUNNING FROM
2017-2018**

THE TOP-LEVEL PERFORMANCE COLLECTION

The Reflector Tech collection is the most advanced collection developed for professional players. It enhances the athlete's performance and features a wide range of technical details like body mapping systems, compression fabrics and muscle supports. With lightweight fabrics, moisture management, outdoor protection, and visibility incorporated into the design, players can perform in any kind of weather. Seamless designs, clean-lined aesthetics and functional details come together in an elevated collection that provides a professional look for all players.

- ✦ **Lightweight fabrics & moisture management**
- ✦ **Body mapping systems & muscle support**
- ✦ **Outdoor protection & visibility**
- ✦ **Compression fabrics for performance and recovery**

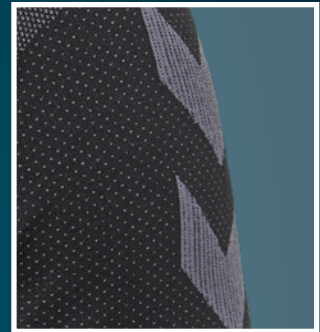
REFLECTOR TECH FUNCTIONALITIES



Seamless construction
with a built-in tonal
jaquard pattern



Knitted chevrons



Built-in mesh panels for
improved ventilation



Stretchable material in
a contemporary cut

Engineered waistband
with integrated
drawcourt



REFLECTOR TECH FUNCTIONALITIES

Built-in ventilation zone in woven mesh construction

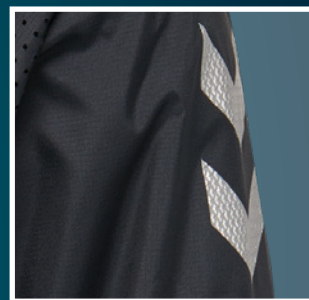


Lightweight micro fiber in wind proof construction

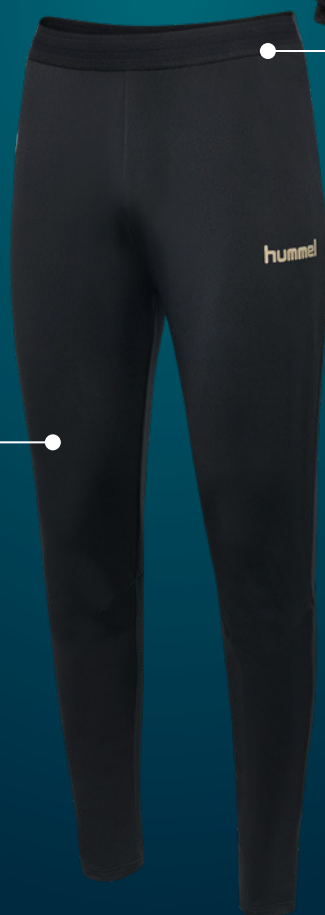


Contemporary fits to enhance ease of movement

Printed texture chevrons



Performance fit in stretchable material



Engineered waistband with integrated drawcourt

REFLECTOR TECH OVERVIEW

REFLECTOR
TECH JERSEY
003747



REFLECTOR
TECH SWEAT
033409



REFLECTOR
TECH JACKET
083058



REFLECTOR
TECH SHORTS
011363



REFLECTOR
TECH FOOTBALL PANT
037236



mmel[®]



REFLECTOR TECH JERSEY

- 100% polyester
- Seamless knit
- Mixed knit pattern body mapping
- Integrated hummel and chevrons
- Slim
- Seamless
- Flexibility
- BeeCool



003747 : S M L XL 2XL



1526
SLEET/
BLACK



8665
PLEIN AIR/
BLUE NIGHTS

REFLECTOR TECH SHORTS

- 80% nylon 20% elastane
- 84% polyester 16% elastane, back yoke mesh
- Single elastic waistband with inside integrated drawstring
- Textured transfer printed chevrons
- Silicon printed hummel



011363 : S M L XL 2XL



2001
BLACK



7429
BLUE NIGHTS

REFLECTOR TECH SWEAT

- 250gm² 90% polyester 10% elastane
- Stretch polyester sleeve panels
- Funnel zip neck, semi auto-lock zip
- Silicon textured ergonomic zip puller
- Ergonomic cut lines
- Textured transfer printed chevrons
- Silicon printed hummel



033409 : S M L XL 2XL



2001
BLACK



7429
BLUE NIGHTS

REFLECTOR TECH JACKET

- 100% polyester ripstop
- 90% polyester 10% elastane for panel and storm cuff thumbhole
- 100% polyester mesh lining
- Punched hole ventilation
- Stretch knit back collar
- Reflective tape piping
- Lightweight reverse coil front zip and zip pockets - semi autolock
- Silicon textured ergonomic zip puller
- 3D sleeve cutting
- Stretch binding hem and cuff
- Textured transfer printed chevrons
- Silicon printed hummel

083058 : S M L XL 2XL



2001
BLACK



7429
BLUE NIGHTS



REFLECTOR TECH FOOTBALL PANT

- 90% polyester 10% elastane
- 86% nylon 14% elastane, back calf compression
- Ergonomic cut lines
- Silicon printed hummel

037236 : S M L XL 2XL

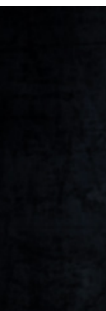
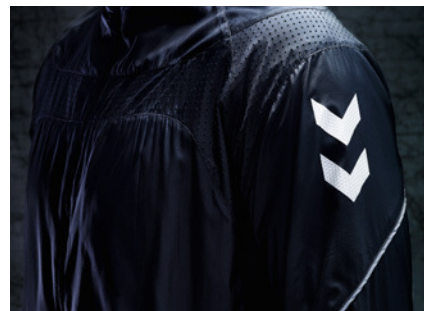


2001
BLACK

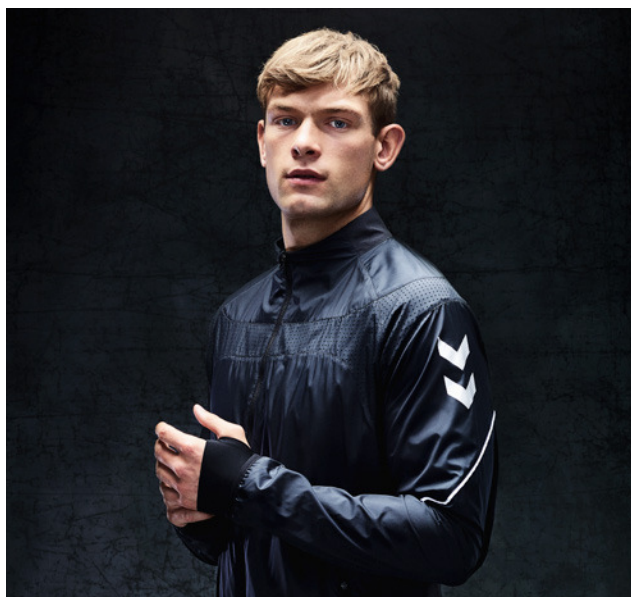


7429
BLUE NIGHTS





**REFLECTOR TECH
COLLECTION
RUNNING FROM
2017-2018**





hummel



TECH MOVE

**TECH MOVE
COLLECTION
RUNNING FROM
2018-2020**

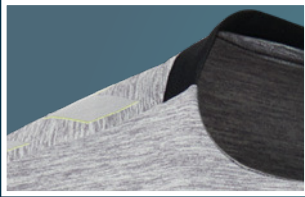
THE MULTIFUNCTIONAL TEAM SPORT COLLECTION

Tech Move is designed for high-performance team sport athletes who appreciate a combination of high functionality and modern aesthetics. It is a multifunctional performance collection that combines the functionality of lightweight fabrics with second skin comfort. Textured chevrons and 3D signature mesh panels are integrated into the articulated seams, and as the designs are all-weather items, they reflect the inherent Danish DNA of hummel.

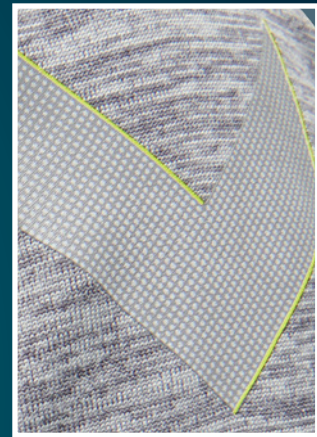
- ✦ **Lightweight materials with second skin comfort**
- ✦ **High-performance functions and benefits**
- ✦ **All-weather designs**
- ✦ **Increased functionality**

TECH MOVE FUNCTIONALITIES

Clean design lines



Printed textured chevrons with 3D effect



High density
lightweight knit and
moisture wicking
abilities

BEECOOL
Moisture management

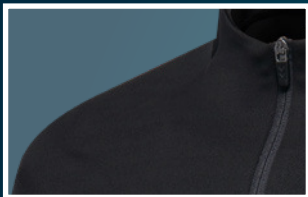


Side body signature
3D mesh panels



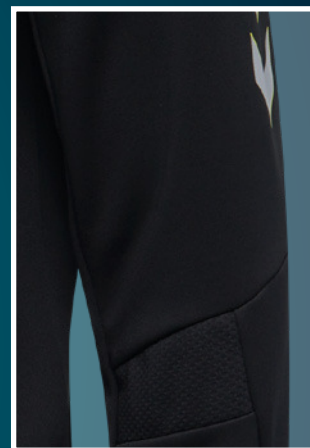
TECH MOVE FUNCTIONALITIES

Reduced top stitching

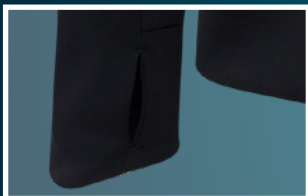


Contemporary fits to enhance ease of movement

Articulated cut sleeves with signature 3D mesh panel



Integrated thumbholes



Improved fit

Concealed lightweight trims and fastenings



TECH MOVE OVERVIEW

TECH MOVE
JERSEY S/S
200004/ 200005



TECH MOVE
JERSEY WOMEN S/S
200006



TECH MOVE
JERSEY L/S
200007/ 200048



TECH MOVE
POLY SHORTS
200008/ 200009



TECH MOVE
POLY SHORTS WOMEN
200010



**TECH MOVE
POLY ZIP JACKET**
200013/ 200014



**TECH MOVE
POLY HOODIE**
200017/ 200018



**TECH MOVE
HALF ZIP SWEATSHIRT**
200011/ 200012



**TECH MOVE
ZIP HOOD**
200019/ 200020



**TECH MOVE
TRAINING SHORTS**
200025/ 200026



**TECH MOVE
POLY PANTS**
200015/ 200016



**TECH MOVE
FOOTBALL PANTS**
200021/ 200022



**TECH MOVE
FUNCTIONAL LIGHT WEIGHT JACKET**
200646/ 201000



**TECH MOVE
ALL WEATHER JACKET**
200027/ 200028



**TECH MOVE
BENCH JACKET**
200029



TECH MOVE JERSEY S/S

- 100% polyester
- Knit fabric
- BeeCool treatment
- Rib crew neck
- Signature mesh side panels and signature label

- Textured printed chevrons and printed logo
- Regular fit

200005 : 116 128 140 152 164

200004 : S M L XL 2XL 3XL



TECH MOVE JERSEY L/S

- 100% Polyester
- Knitted fabric
- BeeCool treatment
- Rib crew neck
- Signature mesh side panels and label

- Textured printed chevrons and printed logo
- Regular fit

200048 : 116 128 140 152 164

200007 : S M L XL 2XL 3XL



TECH MOVE POLY SHORTS

- 100% Polyester
- Knitted fabric
- BeeCool treatment
- Signature mesh side panels and label
- Inner briefs only in color 9001
- Textured printed chevrons and printed logo
- Regular fit

200009 : 116 128 140 152 164

200008 : S M L XL 2XL 3XL



TECH MOVE JERSEY WOMEN S/S

- 100% Polyester
- Knitted fabric
- BeeCool treatment
- Rib crew neck
- Signature mesh side panels and label
- Textured printed chevrons and printed logo
- Regular fit

200006 : XS S M L XL



TECH MOVE

TECH MOVE POLY SHORTS WOMEN

- 100% Polyester
- Knitted fabric
- BeeCool treatment
- Signature mesh side panels and label
- Inner briefs only in color 9001
- Textured printed chevrons and printed logo
- Regular fit

200010 : XS S M L XL



TECH MOVE POLY ZIP JACKET

- 100% Polyester
- Knitted fabric
- Integrated thumbholes
- Signature mesh side panels and label
- Textured printed chevrons and printed logo
- Regular fit

200014 : 116 128 140 152 164

200013 : S M L XL 2XL 3XL



TECH MOVE POLY HOODIE

- 95% polyester/ 5% Elastane
- Integrated thumbholes
- Signature mesh side panels and label
- Textured printed chevrons and printed logo
- Regular fit

200018 : 116 128 140 152 164

200017 : S M L XL 2XL 3XL



TECH MOVE HALF ZIP SWEATSHIRT

- 100% polyester
- Texture knitted fabric
- Integrated thumbholes
- Signature mesh side panels & label
- Textured printed chevrons & printed logo
- Regular fit

200012 : 116 128 140 152 164

200011 : S M L XL 2XL



TECH MOVE ZIP HOOD

- 95% polyester/ 5% elastane
- Integrated thumbholes
- Signature mesh side panels & label
- Textured printed chevrons & printed logo
- Regular fit

200020 : 116 128 140 152 164

200019 : S M L XL 2XL 3XL



TECH MOVE TRAINING SHORTS

- 92% polyester 8% elastane
- 4-ways stretch woven fabric
- Signature mesh leg panels and signature label
- Textured printed chevrons and printed logo
- Regular fit

200026 : 116 128 140 152 164
200025 : S M L XL 2XL



TECH MOVE POLY PANTS

- 100% Polyester
- Knitted fabric
- Invisible zip pockets
- Signature mesh side panels and label
- Textured printed chevrons and printed logo
- Slim fit

200016 : 116 128 140 152 164
200015 : S M L XL 2XL 3XL



TECH MOVE FOOTBALL PANTS

- 100% polyester
- Rib at back calf panels
- Invisible zip pockets
- Signature mesh side panels and label
- Textured printed chevrons and printed logo
- Textured mesh back yoke
- Slim fit

200022 : 116 128 140 152 164
200021 : S M L XL 2XL



TECH MOVE FUNCTIONAL LIGHT WEIGHT JACKET

- 100% polyester
- Woven fabric
- Mini ripstop, semi transparent
- Water repellent
- Invisible zip pockets
- Textured printed chevrons and printed logo
- Regular fit

201000 : 116 128 140 152 164
200646 : S M L XL 2XL



TECH MOVE ALL WEATHER JACKET

- 100% polyester
- Stretch woven fabric with membrane
- Water repellent
- Storm cuffs
- Underarm ventilation
- Textured printed chevrons and printed logo
- Regular fit

200028 : 116 128 140 152 164
200027 : S M L XL 2XL



TECH MOVE BENCH JACKET

- 100% polyester
- Woven fabric
- Water repellent
- Quilted padding
- Storm cuff
- Invisible zip pockets
- Textured printed chevrons and printed logo
- Regular fit

200029 : S M L XL 2XL 3XL





Danish National Team

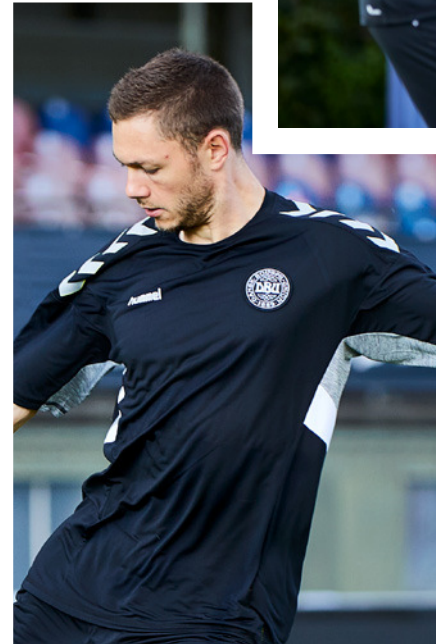


**TECH MOVE
COLLECTION
RUNNING FROM
2018-2020**



**TECH MOVE
COLLECTION
RUNNING FROM
2018-2020**





Danish National Team



HUMMEL SIRIUS

**HUMMEL SIRIUS
COLLECTION
RUNNING FROM
2015-2018**

THE HERITAGE-BASED TEAMSPORT COLLECTION

Combining quality, style and performance, hummel Sirius is the heritage inspired team sport collection. Functional cuts provide ease of movement and comfort, and technical features such as moisture management and ventilation details support the body and enhance performance. With stand-out embossed design details and chevrons on the side of the body, this collection truly stands out as an aesthetic shining star in the team sport collections.

- ✦ **Functional cuts for ease of movement and comfort**
- ✦ **Moisture management & ventilation details to support and enhance performance**
- ✦ **Embossed design details for stand-out looks**
- ✦ **Heritage designs for men, women, and children**

HUMMEL SIRIUS FUNCTIONALITIES

Retro neck design
inspired by '80s and
'90s hummel jerseys



Fashion inspired
shoulder panel



Perforated printed
chevrons



Futuristic embossed
design detail on the chest



Embroidered logo



HUMMEL SIRIUS FUNCTIONALITIES

Articulated cut sleeves
with signature 3D
mesh panel



Ribbed insert at elbow

Integrated thumbholes



Concealed lightweight
trims and fastenings

Zippered welt pockets

Perforated printed
chevrons



Rib at lower back leg



HUMMEL SIRIUS OVERVIEW

**HUMMEL SIRIUS
SS JERSEY**
003631/ 103631



**HUMMEL SIRIUS
SS JERSEY WOMEN**
003632



**HUMMEL SIRIUS
HALF ZIP SWEAT**
033281/ 133281



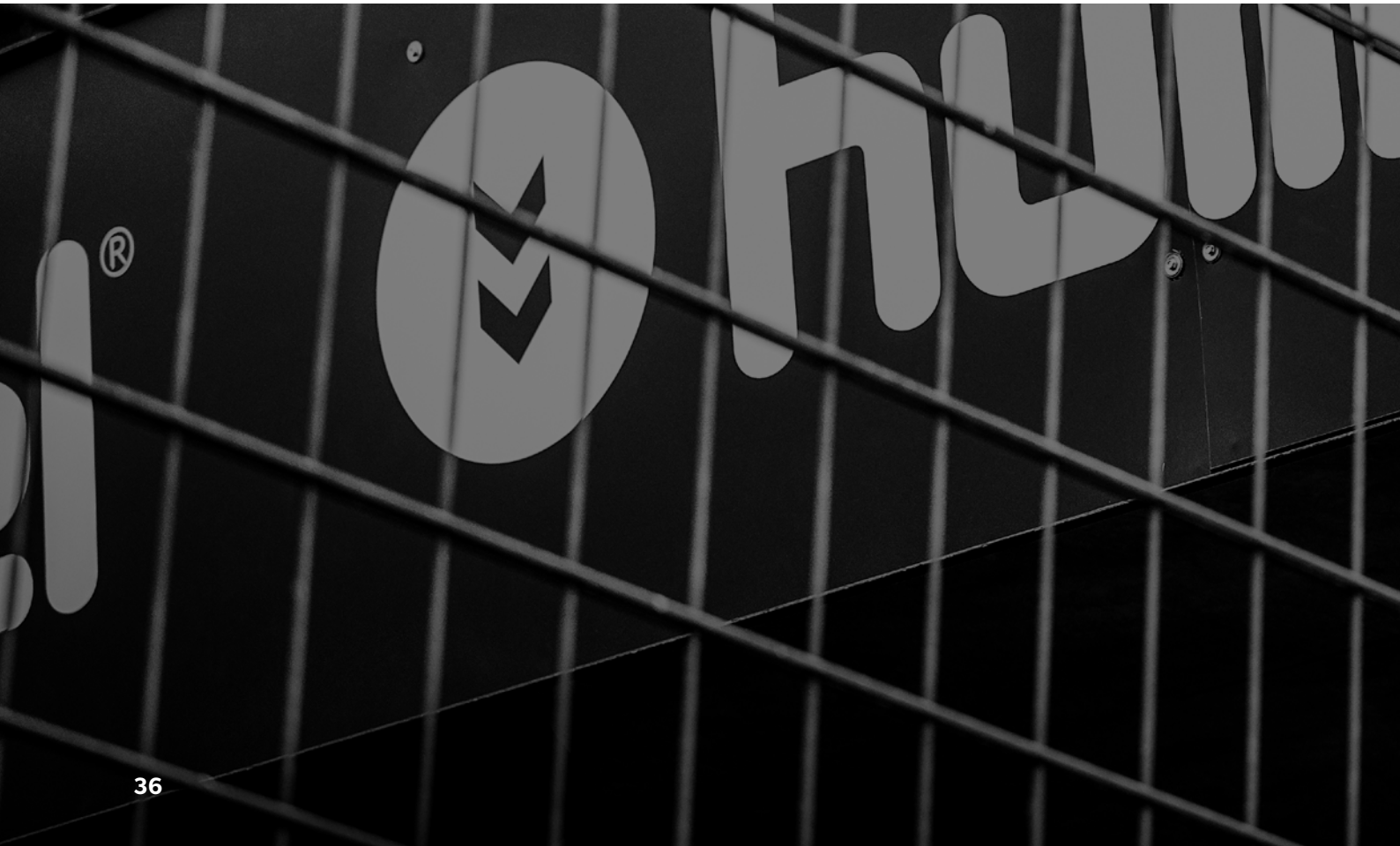
**HUMMEL SIRIUS
SHORTS**
010797/ 110797



**HUMMEL SIRIUS
SHORTS WOMEN**
010798



**HUMMEL SIRIUS
FOOTBALL PANT**
037123/ 137123



mmel[®]



HUMMEL SIRIUS SS JERSEY

- 136gm² 100% polyester knit with quick dry moisture management
- 115gm² 91% polyester 9% spandex mesh insert at armholes
- 1x1 ribbed v-neck
- Embossed print pattern on front chest

- Perforated chevron print
- Embroidered logo

103631 : 116/128 140/152 164/176
003631 : S M L XL 2XL 3XL



HUMMEL SIRIUS SS JERSEY WOMEN

- 136gm² 100% polyester knit with quick dry moisture management
- 115gm² 91% polyester 9% spandex mesh insert at armholes
- 1x1 ribbed v-neck
- Embossed print pattern on front chest
- Perforated chevron print
- Embroidered logo

003632 : XS S M L XL 2XL



HUMMEL SIRIUS HALF ZIP SWEAT

- 200gm², 100% polyester, unbrushed
- Ribbed insert at elbow
- Ribbed thumbhole sleeve extension inside cuff
- Perforated chevron print
- Embroidered logo

133281 : 116 128 140 152 164 176
033281 : S M L XL 2XL 3XL



HUMMEL SIRIUS SHORTS

- 136gm² 100% polyester knit with quick dry moisture management
- Inner briefs
- Perforated chevron print
- Embroidered logo

110797 : 116/128 140/152 164/176
010797 : S M L XL 2XL 3XL

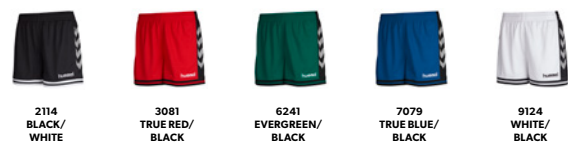


HUMMEL SIRIUS

HUMMEL SIRIUS SHORTS WOMEN

- 136gm² 100% polyester knit with quick dry moisture management
- Inner briefs only in color 9124
- Perforated chevron print
- Embroidered logo

010798 : XS S M L XL



HUMMEL SIRIUS FOOTBALL PANT

- 270gm² 100% polyester knit
- 1x1 rib at lower inner leg
- Zippered welt pockets
- Perforated chevron print
- Embroidered logo

137123 : 116 128 140 152 164 176
037123 : S M L XL 2XL 3XL





AUTHENTIC CHARGE

**AUTHENTIC CHARGE
COLLECTION
RUNNING FROM
2017-2019**

THE FULL RANGE FOR EVERY KIND OF TRAINING

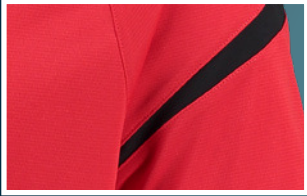
As the most iconic team sport collection in the hummel range, Authentic Charge covers everything players need. From lightweight indoor jerseys to outerwear, Authentic Charge combines performance-enhanced fabrics with comfort, optimal ease of movement and great attention to functional details. It incorporates maximum ventilation, weather protection and features for maximum speed and performance. With chevron tape and speed-stripes, Authentic Charge has a unique signature that underlines its popularity.

- ✦ **Streamlined designs with functional details**
- ✦ **Lightweight performance and maximum ventilation**
- ✦ **Focus on speed and ease of movement**
- ✦ **Weather protection for comfort**

AUTHENTIC CHARGE FUNCTIONALITIES



Speed stripe to elevate design experience



Modern textured chevron tape with a clear heritage reference

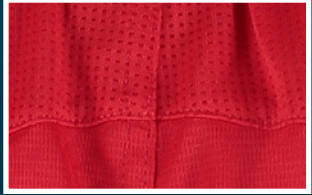
Mesh back for better ventilation



High density lightweight knit and moisture wicking abilities



Back yoke in mesh for improved ventilation



AUTHENTIC CHARGE FUNCTIONALITIES

Hidden lightweight trim

Protective neck construction with hideable hood



Articulated cut sleeves with signature 3D mesh panel

Storm cuff with thumb hole



Stretchable material for improved fit for the high performance player

Modern performance fit

AUTHENTIC CHARGE OVERVIEW

**AUTHENTIC CHARGE
SS POLY JERSEY**
003677/ 103677



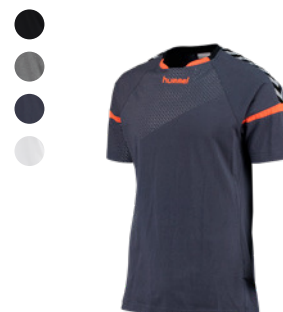
**AUTHENTIC CHARGE
SS POLY JERSEY WOMEN**
003678



**AUTHENTIC CHARGE
LS POLY JERSEY**
004616/ 104616



**AUTHENTIC CHARGE
SS TRAINING JERSEY**
003679/ 103679



**AUTHENTIC CHARGE
POLY SHORTS**
011334/ 111334



**AUTHENTIC CHARGE
POLY SHORTS WOMEN**
011335



**AUTHENTIC CHARGE
FUNCTIONAL POLO**
002435



**AUTHENTIC CHARGE
TRAINING SHORTS**
011503/ 111503



**AUTHENTIC CHARGE
TRAINING SWEAT**
033406/ 133406



**AUTHENTIC CHARGE
TURTLE NECK**
033407/ 133407



**AUTHENTIC CHARGE
POLY HOODIE**
033403/ 133403



**AUTHENTIC CHARGE
ZIP HOODIE**
033416/ 133416



**AUTHENTIC CHARGE
HYBRID FOOTBALL PANT**
037232/ 137232



**AUTHENTIC CHARGE
FOOTBALL PANTS**
037229/ 137229



**AUTHENTIC CHARGE
3/4 PANTS**
037614/ 137614



**AUTHENTIC CHARGE
WOMEN POLY HOODIE**
033415



**AUTHENTIC CHARGE
MICRO ZIP JACKET**
033551/ 133551



**AUTHENTIC CHARGE
MICRO ZIP JAKET WOMEN**
033552



**AUTHENTIC CHARGE
POLY ZIP JACKET**
033401/ 133401



**AUTHENTIC CHARGE
COTTON SWEATSHIRT**
003709/ 103709



AUTHENTIC
CHARGE

**AUTHENTIC CHARGE
MICRO PANT**
037227/ 137227



**AUTHENTIC CHARGE
MICRO PANT WOMEN**
037231



**AUTHENTIC CHARGE
POLY PANTS**
037228/ 137228



**AUTHENTIC CHARGE
SWEAT PANT**
037127/ 137127



**AUTHENTIC CHARGE
LIGHT WEIGHT WINDBREAKER**
083048/ 183048



**AUTHENTIC CHARGE
WINDBREAKER**
083036/ 183036



**AUTHENTIC CHARGE
2IN1 SHORTS**
011342/ 111342



**AUTHENTIC CHARGE
2IN1 SHORTS WOMEN**
011343



**AUTHENTIC CHARGE
FUNCTIONAL JACKET**
083051/ 183051



**AUTHENTIC CHARGE
ALLWEATHER JACKET**
083049/ 183049



**AUTHENTIC CHARGE
STADION JACKET**
083050/ 183050



AUTHENTIC CHARGE SS POLY JERSEY

- 150gm² 100% grid textured polyester moisture wicking
- 150gm² 100% polyester grid mesh
- 1x1 contrast rib crew neck
- Contrast speed stripe

- Textured woven chevron tape
- Embroidered logo

103677 : 104 116/128 140/152 164/176
003677 : S M L XL 2XL 3XL



AUTHENTIC CHARGE LS POLY JERSEY

- 150gm² 100% grid textured polyester moisture wicking
- 150gm² 100% polyester grid mesh
- 1x1 contrast rib crew neck
- Contrast speed stripe

- Textured woven chevron tape
- Embroidered logo

104616 : 116/128 140/152 164/176
004616 : S M L XL 2XL



AUTHENTIC CHARGE POLY SHORTS

- 150gm² 100% grid textured polyester moisture wicking
- 150gm² 100% polyester grid mesh back yoke
- Contrast speed stripe
- Polyester drawcord with silver printed hummel tip
- Textured woven chevron tape
- Embroidered logo

111334 : 104 116/128 140/152 164/176
011334 : S M L XL 2XL 3XL



AUTHENTIC CHARGE SS POLY JERSEY WOMEN

- 150gm² 100% grid textured polyester moisture wicking
- 150gm² 100% polyester grid mesh
- 1x1 contrast rib crew neck
- Contrast speed stripe
- Textured woven chevron tape
- Embroidered logo

003678 : XS S M L XL 2XL



0366
NASTURTIIUM/
OMBRE BLUE



2001
BLACK



2007
DARK GREY MELANGE



3062
TRUE RED



3233
BRIGHT ROSE



3819
LIBERTY



5001
SPORTS YELLOW



6140
EVERGREEN



6595
GREEN GECKO



7045
TRUE BLUE



7364
TOTAL ECLIPSE



8730
OMBRE BLUE/
NASTURTIIUM



9001
WHITE



AUTHENTIC
CHARGE

AUTHENTIC CHARGE POLY SHORTS WOMEN

- 150gm² 100% grid textured polyester moisture wicking
- 150gm² 100% polyester grid mesh back yoke
- Contrast speed stripe
- Polyester drawcord with silver printed hummel tip
- Textured woven chevron tape
- Inner briefs only for color 9001
- Embroidered logo

011335 : XS S M L XL 2XL



2001
BLACK



3062
TRUE RED



5001
SPORTS YELLOW



6140
EVERGREEN



7045
TRUE BLUE



7364
TOTAL ECLIPSE



8730
OMBRE BLUE/
NASTURTIIUM



9001
WHITE



AUTHENTIC CHARGE SS TRAINING JERSEY

- 160gm² 70% cotton / 30% polyester
- 1x1 contrast rib crew neck
- Transparent silicon print across chest and on sleeve
- Contrast speed stripe
- Textured woven chevron tape
- Embroidered logo



103679 : 116/128 140/152 164/176
003679 : S M L XL 2XL 3XL



AUTHENTIC CHARGE FUNCTIONAL POLO

- 180gm² 100% polyester, moisture wicking
- 1x1 contrast rib collar
- Embossed back neck tape
- Contrast inside placket
- 2 ligne buttons
- Contrast speed stripe
- Textured woven chevron tape
- Embroidered logo



002435 : S M L XL 2XL 3XL



AUTHENTIC CHARGE 3/4 PANTS

- 250gm² 100% polyester
- 1x1 rib cuffs
- Polyester drawcord with hummel printed tip
- Authentic Charge textured woven label
- Textured woven chevron tape
- Embroidered logo



137614 : 116 128 140 152 164 176
037614 : S M L XL 2XL



AUTHENTIC CHARGE TRAINING SHORTS

- 185gm² 100% textured polyester
- Concealed reverse coil zip pockets
- Contrast speed stripe
- Polyester drawcord with silver printed hummel tip
- Textured woven chevron tape
- Embroidered logo

111503 : 116/128 140/152 164/176
011503 : S M L XL 2XL



2001
BLACK



AUTHENTIC
CHARGE

AUTHENTIC CHARGE 2IN1 SHORTS

- 180gm² 100% polyester, outer short
- 92% polyester / 8% spandex, Inner short
- Polyester drawcord with hummel printed tip
- Contrast speed stripe
- Embroidered logo

111342 : 116/128 140/152 164/176
011342 : S M L XL 2XL



2001
BLACK



AUTHENTIC CHARGE 2IN1 SHORTS WOMEN

- 180gm² 100% polyester, outer short
- 92% polyester / 8% spandex, Inner short
- Contrast speed stripe
- Embroidered logo

011343 : XS S M L XL



2001
BLACK



AUTHENTIC CHARGE MICRO ZIP JACKET

- 226T microfiber 100% polyester
- 100% polyester mesh lining
- Emboss print on shoulders
- Reverse coil zip front and pockets
- Textured silicon chevron zip pulls
- Stretch binding cuffs & hem

- Contrast speed stripe
- Authentic Charge textured woven label
- Silver transfer size print
- Textured woven chevron tape
- Embroidered logo

133551 : 116 128 140 152 164 176
033551 : S M L XL 2XL 3XL



AUTHENTIC CHARGE MICRO ZIP JACKET WOMEN

- 226T microfiber 100% polyester
- 100% polyester mesh lining
- Emboss print on shoulders
- Reverse coil zip front and pockets
- Textured silicon chevron zip pulls
- Stretch binding cuffs & hem

- Contrast speed stripe
- Authentic Charge textured woven label
- Silver transfer size print
- Textured woven chevron tape
- Embroidered logo

033552 : XS S M L XL 2XL



AUTHENTIC CHARGE POLY ZIP JACKET

- 250gm² 100% polyester
- Reverse coil front zip
- Textured silicon chevron zip pull
- Emboss printed back neck tape
- Concealed reverse coil zip pockets
- 100% polyester mesh pocket bags

- Polyester/elastane 1x1 rib collar & cuffs
- Contrast speed stripe
- Authentic Charge textured woven label
- Textured woven chevron tape
- Embroidered logo

133401 : 116 128 140 152 164 176
033401 : S M L XL 2XL



AUTHENTIC CHARGE COTTON SWEATSHIRT

- 280gm² 70% cotton / 30% polyester
- 1x1 rib collar, cuffs & hem
- Emboss print back neck tape
- Contrast speed stripe
- Authentic Charge textured woven label

- Textured woven chevron tape
- Embroidered logo

103709 : 116/128 140/152 164/176
003709 : S M L XL 2XL 3XL



AUTHENTIC CHARGE MICRO PANT

- 226T microfiber 100% polyester
- 100% polyester mesh lining
- Reverse coil zip pockets
- Textured silicon chevron zip pulls
- Polyester drawcord with hummel printed tip
- Concealed reverse coil hem leg zippers
- Authentic Charge textured woven label

- Textured woven chevron tape
- Embroidered logo

137227 : 116 128 140 152 164 176
037227 : S M L XL 2XL 3XL



2001
BLACK



AUTHENTIC CHARGE MICRO PANT WOMEN

- 226T microfiber 100% polyester
- 100% polyester mesh lining
- Reverse coil zip pockets
- Textured silicon chevron zip pulls
- Polyester drawcord with hummel printed tip
- Concealed reverse coil hem leg zippers
- Authentic Charge textured woven label

- Textured woven chevron tape
- Embroidered logo

037231 : XS S M L XL 2XL



2001
BLACK



AUTHENTIC CHARGE POLY PANTS

- 250gm² 100% polyester
- Concealed reverse coil zip pockets
- Mesh back yoke & pocket bags
- Textured silicon chevron zip pulls
- Polyester drawcord with hummel printed tip
- Concealed reverse coil hem leg zippers
- Contrast speed stripe

- Authentic Charge textured woven label
- Textured woven chevron tape
- Embroidered logo

137228 : 116 128 140 152 164 176
037228 : S M L XL 2XL



2001
BLACK



AUTHENTIC CHARGE SWEAT PANT

- 280gm² 70% cotton 30% polyester
- 1*1 rib at cuffs
- Drawcord with hummel printed tip
- Authentic Charge woven chevron tape
- Embroidered logo

137127 : 116/128 140/152 164/176
037127 : S M L XL 2XL 3XL



2001
BLACK



AUTHENTIC CHARGE POLY HOODIE

- 250gm² 100% polyester
- 100% polyester mesh hood lining & pocket bag
- Emboss printed back neck tape
- Side pockets
- 100% polyester mesh pocket bags
- Polyester/elastane 1x1 rib hem & cuffs

- Contrast speed stripe
- Authentic Charge textured woven label
- Textured woven chevron tape
- Embroidered logo

133403 : 116 128 140 152 164 176
033403 : S M L XL 2XL 3XL



AUTHENTIC CHARGE WOMEN POLY HOODIE

- 100% polyester, knit
- 250gm² polyester
- Polyester mesh hood lining and pocket bag
- Emboss printed neck tape
- Side pockets
- Polyester/elastan 1x1 rib at hem and cuff

- Contrast speed stripe
- Textured woven chevron tape
- Embroidered logo

033415 : XS S M L XL 2XL



AUTHENTIC CHARGE ZIP HOODIE

- 100% polyester, knit
- 250gm², 100% polyester
- 100% polyester mesh hood lining and pocket bag
- Emboss printed neck tape
- Side pockets
- Polyester/elastan 1x1 rib at hem and cuffs

- Contrast speed stripe
- Front zip
- Textured woven chevron tape
- Embroidered logo
- Regular fit

133416 : 116 128 134 140 152 164 176
033416 : S M L XL XXL 3XL



AUTHENTIC CHARGE TRAINING SWEAT

- 230gm² 100% polyester interlock knit
- Reverse coil zip neck with silicon zip pull
- Emboss printed back neck tape
- Emboss print on shoulders

- Stretch binding at collar, cuffs, hem & thumbhole
- Contrast speed stripe
- Authentic Charge woven chevron tape
- Embroidered logo

133406 : 116 128 140 152 164 176
033406 : S M L XL 2XL



AUTHENTIC CHARGE WINDBREAKER

- 240T microfiber with light coating 100% polyester
- 100% polyester mesh lining
- 1x1 rib turtle neck
- Reverse coil zip neck - opening along raglan sleeve
- Stretch binding cuffs & hem

- Emboss print back neck tape
- Contrast speed stripe
- Authentic Charge textured woven label
- Textured woven chevron tape
- Embroidered logo

183036 : 116 128 134 140 152 164 176
083036 : S M L XL 2XL



0366
NASTURTIUM/
OMBRE BLUE

2001
BLACK

8730
OMBRE BLUE/
NASTURTIUM



AUTHENTIC CHARGE TURTLE NECK

- 250gm² 100% polyester
- Polyester/elastane 1x1 rib turtle neck
- Emboss printed back neck tape
- Stretch binding cuffs & thumbhole
- Contrast speed stripe
- Authentic Charge textured woven label

- Textured woven chevron tape
- Embroidered logo

133407 : 116/128 140/152 164/176
033407 : S M L XL 2XL



2001
BLACK

3062
TRUE RED

8730
OMBRE BLUE/
NASTURTIUM



AUTHENTIC CHARGE LIGHT WEIGHT WINDBREAKER

- 380T ripstop, 100% polyester
- 100% polyester mesh lining
- Functional hood: adjustable concealed drawcords to improve fit and peripheral vision
- Back ventilation
- Reverse coil zip neck & pockets

- Textured silicon chevron zip pulls
- Stretch binding cuffs & hem
- Silver transfer size print
- Reflective speed stripe
- Textured woven chevron tape
- Printed logo

183048 : 116/128 140/152 164/176
083048 : S M L XL 2XL



2042
BLACK/
BLACK



AUTHENTIC CHARGE HYBRID FOOTBALL PANT

- 250gm² 85% polyester / 15% spandex
- Mesh yoke
- Polyester drawcord with hummel printed tip
- Textured woven chevron tape
- Embroidered logo

137232 : 116 128 134 140 152 164 176
037232 : S M L XL 2XL



2001
BLACK



AUTHENTIC CHARGE FOOTBALL PANTS

- 250gm² 100% polyester
- 1x1 rib back calf panel
- Drawcord with hummel printed tip
- Authentic Charge textured woven label
- Textured woven chevron tape
- Embroidered logo
- Zip pockets

137229 : 116 128 134 140 152 164 176
037229 : S M L XL 2XL



2001
BLACK



AUTHENTIC CHARGE FUNCTIONAL JACKET

- 100% Polyester 380T ripstop
- 100% Polyester mesh lining
- Packable hood
- Back ventilation
- Reverse coil zip at front and in side pockets
- Textured woven chevron tape
- Printed logo



183051 : 116/128 140/152 164/176
083051 : S M L XL 2XL



2042
BLACK/
BLACK

8730
OMBRE BLUE/
NASTURTIUM

AUTHENTIC CHARGE ALL-WEATHER JACKET

- 100% Polyester Dobby Taslan WP 3000
- 100% polyester mesh lining
- Concealed reverse coil double ended front zip
- Packable functional hood: adjustable concealed drawcords to improve fit and peripheral vision
- Brushed inside collar and back half moon
- Silver transfer size print
- Storm welt pockets
- Back ventilation
- Stretch storm cuff
- Adjustable hem - concealed cordlock

- Textured silicon chevron zip pull
- Reflective speed stripe
- Textured woven chevron tape
- Embroidered logo



183049 : 116/128 140/152 164/176
083049 : S M L XL 2XL



2042
BLACK/
BLACK

3081
TRUE RED/
BLACK

7079
TRUE BLUE/
BLACK

8730
OMBRE BLUE/
NASTURTIUM

AUTHENTIC CHARGE STADION JACKET

- 100% polyester Dobby Taslan WP 3000
- 100% polyester chevron quilted lining
- 180gm² Padding
- Embossed print on shoulders
- Concealed reverse coil double ended front zip
- Brushed inside collar and back half moon
- Silver transfer size print
- Storm welt pockets
- Storm cuff
- Textured silicon chevron zip pull
- Textured woven chevron tape
- Embroidered logo



183050 : 116/128 140/152 164/176
083050 : S M L XL 2XL 3XL



2042
BLACK/
BLACK

8730
OMBRE BLUE/
NASTURTIUM

Aarhus United
& SC Freiburg

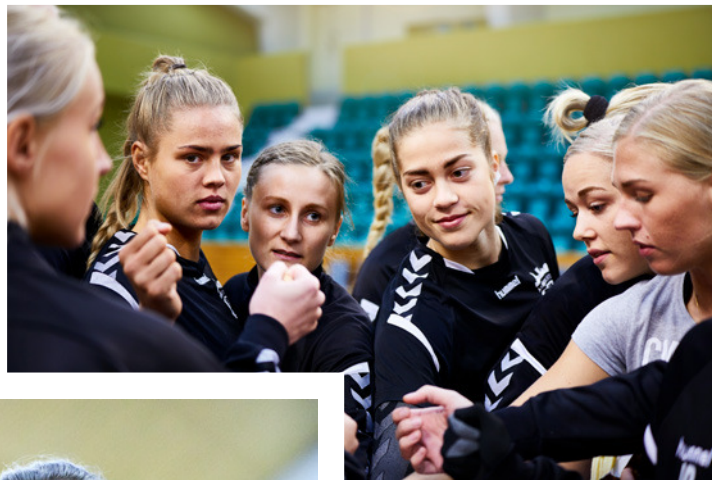


**AUTHENTIC CHARGE
COLLECTION
RUNNING FROM
2017-2019**

AUTHENTIC
CHARGE



**AUTHENTIC CHARGE
COLLECTION
RUNNING FROM
2017-2019**





Aarhus United
& SC Freiburg

nummel



*Deutsche
Wohnen*

CORE

**CORE
COLLECTION
RUNNING FROM
2016-2020**

THE POPULAR COLLECTION OF QUALITY BASICS

Offering a strong range of quality basics, the popular Core collection covers everything players need for both training and matches. As the collection includes everything from comfortable and durable jerseys to pants, jackets and sweatshirts, the Core collection is one of hummel's classics. Elevated neck cuts, sleeve hem details, and the iconic chevrons create a look that delivers maximum value for money.

- ✦ **Quality basics satisfying every need**
- ✦ **Comfortable fabrics and functional cuts for performance**
- ✦ **Iconic chevron print for a consistent look**
- ✦ **Elevated neck cuts and sleeve hem details**

CORE FUNCTIONALITIES



CORE FUNCTIONALITIES

Fold-away hood with elastic for a tighter fit



Waterproof material to 2000 mm WP

Zippered pocket at back of right side seam

Elastic cuff and hem



Printed chevrons



Stretch rib at back lower leg for tight fit

CORE OVERVIEW

CORE SS POLY JERSEY
003636/ 103636



CORE WOMENS SS JERSEY
003649



CORE LS POLY JERSEY
004615/ 104615



CORE POLY SHORTS
011083/ 111083



CORE WOMENS SHORTS
011086



CORE STRIPED SS JERSEY
003755/ 103755



CORE POLYESTER TEE
003756/ 103756



CORE COTTON TEE
009541/ 109541



CORE COTTON POLO
002431/ 102431





CORE POLY JACKET
036893/ 136893



CORE COTTON SWEAT
036894/ 136894



CORE 1/2 ZIP SWEAT
036895/ 136895



CORE COTTON HOODIE
033451/ 133451



CORE SPRAY JACKET
080822/ 180822



CORE

CORE POLY PANT
032173/ 132173



CORE COTTON PANT
032175/ 132175



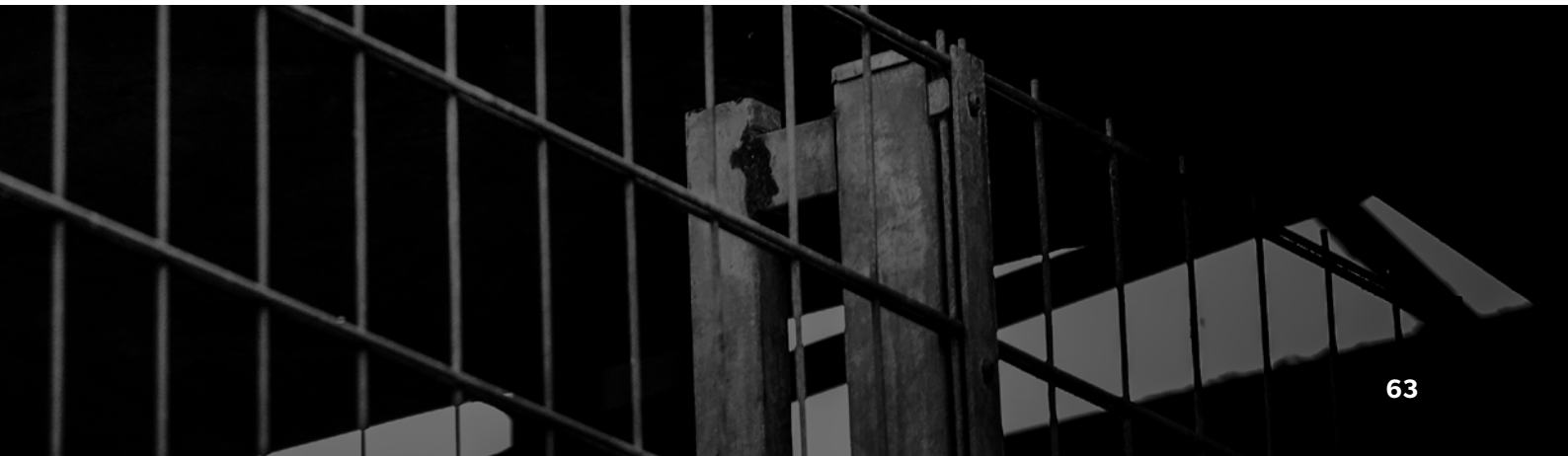
CORE FOOTBALL PANT
032165/ 132165



CORE BENCH PANTS
032182



CORE ALLWEATHER PANT
032181



CORE SS POLY JERSEY

- 136gm² 100% polyester knit
- Printed chevrons and logo

103636 : 116/128 140/152 164/176
003636 : S M L XL 2XL 3XL



CORE LS POLY JERSEY

- 136gm² 100% polyester knit
- Printed chevrons and logo

104615 : 116/128 140/152 164/176
004615 : S M L XL 2XL 3XL



CORE POLY SHORTS

- 136gm² 100% polyester knit
- Printed chevrons & logo
- Inner briefs only in color 9001

111083 : 116/128 140/152 164/176
011083 : S M L XL 2XL 3XL



CORE WOMENS SS JERSEY

- 136gm² 100% polyester knit
- Printed chevrons & logo

003649 : XS S M L XL 2XL



CORE

CORE WOMENS SHORTS

- 136gm² 100% polyester knit
- Printed chevrons & logo
- Inner briefs only in color 9001

011086 : XS S M L XL 2XL



CORE STRIPED SS JERSEY

- 136gm² 100% poly knit
- Sublimation printed stripes at body
- Printed chevrons & logo

103755 : 116/128 140/152 164/176
003755 : S M L XL 2XL



CORE POLY JACKET

- 220gm² 100% polyester knit
- Zippered pockets
- Elastic inside waistband and cuff
- Printed chevrons & logo



136893 : 116 128 140 152 164 176
036893 : S M L XL 2XL 3XL



2001 BLACK 3062 TRUERED 6140 EVERGREEN 7045 TRUEBLUE

CORE COTTON SWEAT

- 320gm² 65% Cotton 35% Polyester, knit
- Rib neck
- Printed chevrons & logo



136894 : 116/128 140/152 164/176
036894 : S M L XL 2XL 3XL



2001 BLACK 3062 TRUERED 5001 SPORTS YELLOW 6140 EVERGREEN 7045 TRUEBLUE

CORE 1/2 ZIP SWEAT

- 220gm² 100% polyester knit
- Pockets
- Elastic inside waistband and cuff
- Printed chevrons & logo



136895 : 116/128 140/152 164/176
036895 : S M L XL 2XL 3XL



2001 BLACK 3062 TRUERED 6140 EVERGREEN 7026 MARINE 7045 TRUEBLUE 8622 MARINE/ATLANTIS 8623 MARINE/ROSE VIOLET

CORE POLY PANT

- 220gm² 100% polyester knit
- Zippered pockets
- Zippered leg vents
- Printed chevrons & logo

132173 : 116 128 140 152 164 176
032173 : S M L XL 2XL 3XL



2001
BLACK



CORE COTTON PANT

- 320gm² 65% Cotton 35% Polyester, knit
- Printed chevrons & logo

132175 : 116/128 140/152 164/176
032175 : S M L XL 2XL 3XL



2001
BLACK



CORE FOOTBALL PANT

- 220gm² 100% polyester knit
- 100% polyester rib at backside of lower legs
- Printed chevrons and logo

132165 : 116 128 140 152 164 176
032165 : S M L XL 2XL 3XL



2001
BLACK



7026
MARINE



CORE COTTON POLO

- 220gm² 100% cotton pique
- Printed chevrons and logo

102431 : 116/128 140/152 164/176
002431 : S M L XL 2XL 3XL



CORE COTTON TEE

- 160gm² 100% cotton knit
- Printed chevrons & logo

109541 : 116/128 140/152 164/176
009541 : S M L XL 2XL 3XL



CORE POLYESTER TEE

- 136gm² 100% poly knit
- Printed chevrons & logo

103756 : 116/128 140/152 164/176
003756 : S M L XL 2XL 3XL



CORE COTTON HOODIE

- 280gm² - 70% cotton/30% polyester, unbrushed back
- Printed chevrons, embroidered hummel logo
- Drawstring in hood
- Clean and simple design

133451 : 116/128 140/152 164/176
033451 : S M L XL 2XL 3XL



CORE SPRAY JACKET

- 100% woven polyester (190T), 2000M W/P
- Zippered pocket at back of right side seam
- Elastic inside cuff and waistband
- Printed chevrons & logo

180822 : 116/128 140/152 164/176

080822 : S M L XL 2XL 3XL



CORE BENCH PANTS

- 100% Polyester with compact padding
- Zippered side pockets
- Printed logo

032182 : XS S M L XL 2XL 3XL



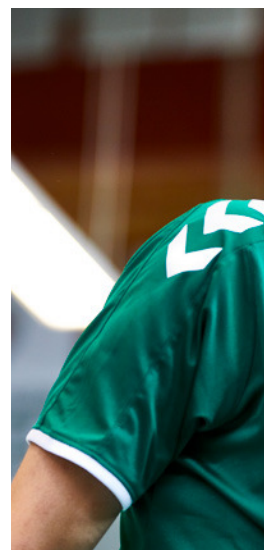
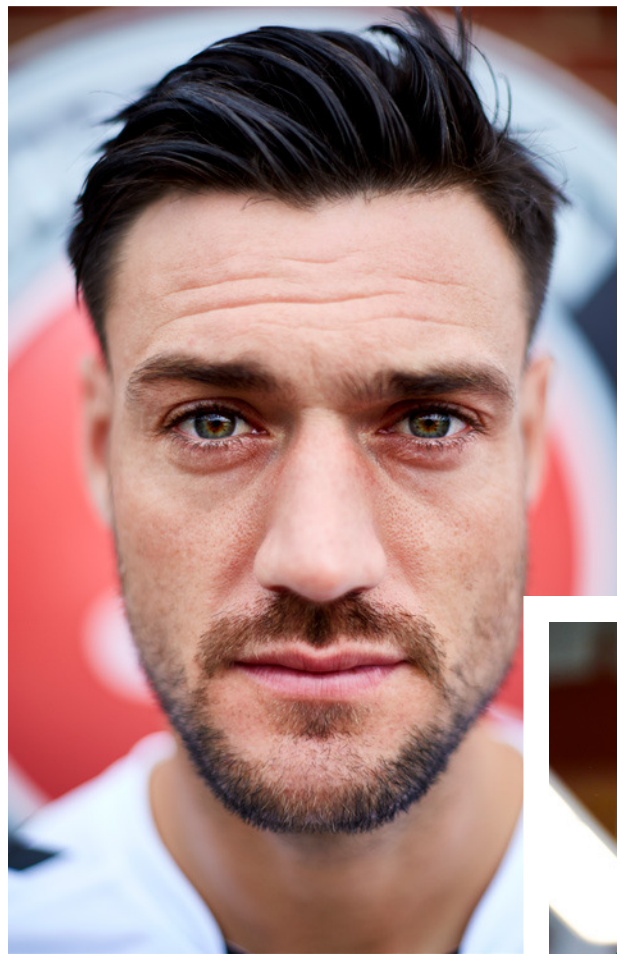
CORE ALL-WEATHER PANT

- 100% woven polyester (190T) 2000M W/P
- Zippered side pockets
- Printed logo

032181 : S M L XL 2XL



**CORE
COLLECTION
RUNNING FROM
2016-2020**





Charlton Athletic
& Füchse Berlin





GOALKEEPER & REFEREE

EXTRA PROTECTION, FIT, AND COMFORT

The goalkeeper and referee collection delivers extra support for every move. Protective padding, effective moisture management and breathable mesh inserts allow for unrestricted movement, extreme leaps and jumps. Padded elbows and tights ensure optimal protection and both the design and colours allow referees and goalkeepers to be easily recognized on the field or court. Inspired by Peter Schmeichel's iconic 90s goalkeeper jersey, selected styles are decked out with retro embossed print.

- ✦ **Breathable fabrics and moisture management**
- ✦ **Padded elbows and thighs for protective support**
- ✦ **Functional fits and range of movement for performance**
- ✦ **Iconic design references and seasonal colours**

ESSENTIAL GOALKEEPER JERSEY

- 100% polyester
- Moisture management
- Padded elbow protection
- Rib collar and cuffs
- Embossed print pattern on front chest and back
- Printed chevrons and logo

104087 : 116/128 140/152 164/176
004087 : S M L XL 2XL



4333
ZINFANDEL

5076
FLAME

5269
BLAZING YELLOW

6605
AQUA GREEN



ESSENTIAL GOALKEEPER SHORTS

- 100% polyester
- Moisture management
- Printed chevrons and logo

110815 : 116/128 140/152 164/176
010815 : S M L XL 2XL



2001
BLACK



ESSENTIAL GOALKEEPER SHORTS WITH PADDING

- 100% polyester
- Moisture management
- Padded thigh protection
- Printed chevrons and logo

110816 : 116/128 140/152 164/176
010816 : S M L XL 2XL



2001
BLACK



CLASSIC GOALKEEPER PANT

- 70% polyester/30 % cotton, dynasymm
- Cool Zone = finish insures effective moisture management, quick dry and high comfort
- Fit Zone = created to support natural active motion
- Guard Zone = padding on each side
- Elastic waistband wit drawstring
- Padding on each side
- Printed logo



131198 : 116/128 140/152 164/176
031198 : S M L XL 2XL



2001
BLACK

CLASSIC REFEREE SS JERSEY

- 100% polyester
- Cool Zone = effective moisture management, quick dry and high comfort
- Guard Zone = padding on elbow
- Mesh side panels with piping design
- Two front pockets
- Printed silver logo
- Contrast rib
- Small only available in Atlantis



003002 : S M L XL 2XL



2001
BLACK

5023
FLUORESCENT

6507
ATLANTIS

CLASSIC REFEREE SHORTS

- 100% polyester woven bi-directional stretch
- Two front pockets
- Back pocket with zipper
- Printed silver logo
- Slits on side legs
- Crepe innerbriefs



010020 : XS S M L XL 2XL



2001
BLACK



BASELAYER & TRAINING

TECHNICAL TRAINING APPAREL AND PREMIUM BASELAYER DESIGNS

Providing the utmost in technical performance and training wear, the premium Baselayer collection and Running & Training apparel collection offer high-performance with a focus on materials, comfort and functionality. Running & Training features quick-drying fabrics, reflective prints, moisture management and anti-bacterial treatments, while the Baselayer collection presents three different sub-collections to meet every need of the athlete. Lightweight materials with ventilation zones regulate body temperatures while ergonomic panelling supports muscle movement.

- ✦ **Body-adapted ventilation zones and moisture management**
- ✦ **Lightweight materials in quick-drying fabrics**
- ✦ **Ergonomic panelling, compression fabrics and seamless designs**
- ✦ **Anti-bacterial treatments and high-performance comfort**

hummel FIRST IBASELAYER



FIRST PERFORMANCE

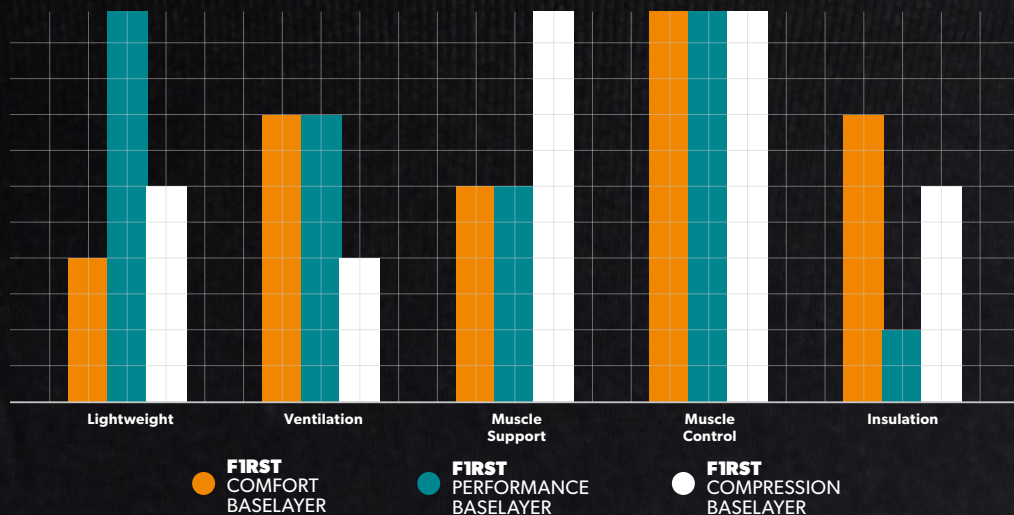
The First Performance Baselayer collection is designed with both an ultra-lightweight fit and comfort in mind. With high ventilation and muscle control incorporated into the collection, this Baselayer range is for extra performance-driven athletes and players.

FIRST COMFORT

The First Comfort Baselayer collection builds on top of the light-weight materials and ventilation designs and features seamless and muscle-enhancing construction. First Comfort features both extra insulation and ventilation and calls for hard workouts and training sessions where the body temperature needs the highest standards of heat regulation.

FIRST COMPRESSION

The First Compression Baselayer collection is created for players that need the utmost in body support to reach maximum endurance during every workout. The range compresses core muscle groups and aids fast recovery after heavy workout sessions with its ergonomic fit and high-stretch capabilities.



HUMMEL FIRST COMPRESSION SS TEE

- 80% Nylon / 20% Spandex
- High compression material for maximum endurance and fast recovery
- Heat transfer chevrons icon logo
- Heat transfer hummel first logo
- Sublimated chevrons and hummel logo in neckline
- Mesh ventilation panels

003746 : S M L XL 2XL



2001
BLACK



HUMMEL FIRST COMPRESSION LS TEE

- 80% Nylon / 20% Spandex
- High compression material for maximum endurance and fast recovery
- Heat transfer chevrons icon logo
- Heat transfer hummel first logo
- Sublimated chevrons and hummel logo in neckline
- Mesh ventilation panels

004329 : S M L XL 2XL



2001
BLACK



HUMMEL FIRST COMPRESSION SHORT TIGHTS

- 80% Nylon / 20% Spandex
- High compression material for maximum endurance and fast recovery
- Heat transfer chevrons icon logo
- Heat transfer hummel first logo
- Sublimated chevrons and hummel logo in waistline
- Mesh ventilation panels

011361 : S M L XL 2XL



2001
BLACK



HUMMEL FIRST COMPRESSION LONG TIGHTS

- 80% Nylon / 20% Spandex
- High compression material for maximum endurance and fast recovery
- Heat transfer chevrons icon logo
- Heat transfer hummel first logo
- Sublimated chevrons and hummel logo in waistline
- Mesh ventilation panels

011362 : S M L XL 2XL



2001
BLACK



HUMMEL FIRST COMFORT SS JERSEY

- 69% Polypropylene / 22% Nylon / 9% Elastane
- Knit construction for added comfort and enhanced breathability
- Fit Zone: Performance fit with extra focus on comfort
- Seamless, tubular knit base layer
- Polygiene treated
- Chevrons and logo knitted into design

103740 : 140/152
003740 : XS/S M/L XL/2XL



2001
BLACK



HUMMEL FIRST COMFORT LS JERSEY

- 69% Polypropylene / 22% Nylon / 9% Elastane
- Knit construction for added comfort and enhanced
- Fit Zone: Performance fit with extra focus on comfort
- Seamless, tubular knit base layer
- Polygiene treated
- Chevrons and logo knitted into design

104327 : 140/152
004327 : XS/S M/L XL/2XL



2001
BLACK



HUMMEL FIRST COMFORT SHORT TIGHTS

- 69% Polypropylene / 22% Nylon / 9% Elastane
- Knit construction for added comfort and enhanced breathability
- Fit Zone: Performance fit with extra focus on comfort
- Seamless, tubular knit base layer
- Polygiene treated
- Chevrons and logo knitted into design

111358 : 140/152
011358 : XS/S M/L XL/2XL



2001
BLACK



BASELAYER
& TRAINING

HUMMEL FIRST COMFORT LONG TIGHTS

- 69% Polypropylene / 22% Nylon / 9% Elastane
- Knit construction for added comfort and enhanced breathability
- Fit Zone: Performance fit with extra focus on comfort
- Seamless, tubular knit base layer
- Polygiene treated
- Chevrons and logo knitted into design

111359 : 140/152
011359 : XS/S M/L XL/2XL



2001
BLACK



HUMMEL FIRST COMFORT WOMEN'S BRA

- 69% Polypropylene / 22% Nylon / 9% Elastane
- Knit construction for added comfort and enhanced breathability
- Fit Zone: Performance fit with extra focus on comfort
- Seamless, tubular knit base layer
- Polygiene treated
- Chevrons and logo knitted into design



003743 : XS/S M/L XL/2XL



2001
BLACK

HUMMEL FIRST COMFORT WOMEN'S TANKTOP

- 69% Polypropylene / 22% Nylon / 9% Elastane
- Knit construction for added comfort and enhanced breathability
- Fit Zone: Performance fit with extra focus on comfort
- Seamless, tubular knit base layer
- Polygiene treated
- Chevrons and logo knitted into design



103741 : 140/152

003741 : XS/S M/L XL/2XL



2001
BLACK

HUMMEL FIRST COMFORT SS WOMEN'S JERSEY

- 69% Polypropylene / 22% Nylon / 9% Elastane
- Knit construction for added comfort and enhanced breathability
- Fit Zone: Performance fit with extra focus on
- Seamless, tubular knit base layer
- Polygiene treated
- Chevrons and logo knitted into design



103742 : 140/152

003742 : XS/S M/L XL/2XL



2001
BLACK

HUMMEL FIRST COMFORT WOMEN'S LS JERSEY

- 69% Polypropylene / 22% Nylon / 9% Elastane
- Knit construction for added comfort and enhanced breathability
- Fit Zone: Performance fit with extra focus on comfort
- Seamless, tubular knit base layer
- Polygiene treated
- Chevrons and logo knitted into design

104328 : 140/152
004328 : XS/S M/L XL/2XL



2001
BLACK



HUMMEL FIRST COMFORT WOMEN'S SHORT TIGHTS

- 69% Polypropylene / 22% Nylon / 9% Elastane
- Knit construction for added comfort and enhanced breathability
- Fit Zone: Performance fit with extra focus on comfort
- Seamless, tubular knit base layer
- Polygiene treated
- Chevrons and logo knitted into design

111838 : 140/152
011838 : XS/S M/L XL/2XL



2001
BLACK



HUMMEL FIRST COMFORT WOMEN'S LONG TIGHTS

- 69% Polypropylene / 22% Nylon / 9% Elastane
- Knit construction for added comfort and enhanced breathability
- Fit Zone: Performance fit with extra focus on comfort
- Seamless, tubular knit base layer
- Polygiene treated
- Chevrons and logo knitted into design

111837 : 140/152
011837 : XS/S M/L XL/2XL



2001
BLACK



HUMMEL FIRST PERFORMANCE SL JERSEY

- 92% Polyester / 8% Spandex
- Printed chevrons and logo
- Fit Zone = For optimal comfort
- Cool Zone = Moisture management



003737 : S M L XL 2XL



2001
BLACK

9001
WHITE



HUMMEL FIRST PERFORMANCE SS JERSEY

- 92% Polyester / 8% Spandex
- Printed chevrons and logo
- Fit Zone = For optimal comfort
- Cool Zone = Moisture management



103729 : 140 152 164 176
003729 : S M L XL 2XL



2001
BLACK

3062
TRUE RED

5001
SPORTS YELLOW

6140
EVERGREEN

7045
TRUE BLUE

9001
WHITE



HUMMEL FIRST PERFORMANCE LS JERSEY

- 92% Polyester / 8% Spandex
- Printed chevrons and logo
- Fit Zone = For optimal comfort
- Cool Zone = Moisture management



104325 : 140 152 164 176
004325 : S M L XL 2XL



2001
BLACK

3062
TRUE RED

5001
SPORTS YELLOW

6140
EVERGREEN

7045
TRUE BLUE

9001
WHITE



HUMMEL FIRST PERFORMANCE SHORT TIGHTS

- 92% Polyester / 8% Spandex
- Printed chevrons and logo
- Fit Zone = For optimal comfort
- Cool Zone = Moisture management

111347 : 140 152 164 176
 011347 : S M L XL 2XL



HUMMEL FIRST PERFORMANCE 3/4 TIGHTS

- 92% Polyester / 8% Spandex
- Printed chevrons and logo
- Fit Zone = For optimal comfort
- Cool Zone = Moisture management

011349 : S M L XL 2XL



BASELAYER & TRAINING

HUMMEL FIRST PERFORMANCE LONG TIGHTS

- 92% Polyester / 8% Spandex
- Printed chevrons and logo
- Fit Zone = For optimal comfort
- Cool Zone = Moisture management

011348 : S M L XL 2XL



HUMMEL FIRST PERFORMANCE SS WOMEN'S JERSEY

- 92% Polyester / 8% Spandex
- Printed chevrons and logo
- Fit Zone = For optimal comfort
- Cool Zone = Moisture management

003738 : XS S M L XL



2001
BLACK

9001
WHITE



HUMMEL FIRST PERFORMANCE LS WOMEN'S JERSEY

- 92% polyester / 8% spandex
- Printed chevrons and logo
- Fit Zone = For optimal comfort
- Cool Zone = Moisture management

004326 : XS S M L XL



2001
BLACK

9001
WHITE



HUMMEL FIRST PERFORMANCE HIPSTER

- 92% Polyester / 8% Spandex
- Printed chevrons and logo
- Fit Zone = For optimal comfort
- Cool Zone = Moisture management

011355 : XS S M L XL



2001
BLACK



FUNDAMENTAL WOMEN'S TIGHTS

- 92% polyester/8% elastane
- Elastic waistband and drawstring
- Printed chevrons and logo

011153 : XS S M L XL



2001
BLACK



HUMMEL FIRST PERFORMANCE WOMEN'S LONG TIGHTS

- 92% Polyester / 8% Spandex
- Printed chevrons and logo
- Fit Zone = For optimal comfort
- Cool Zone = Moisture management

011356 : XS S M L XL 2XL



2001
BLACK



MEN'S RUNNER TEE

- 100% polyester
- Ventilation panel at back for maximum breathability
- Moisture wicking fabric - quick dry and high comfort
- Printed chevrons and logo

019207 : S M L XL 2XL



2001
BLACK

3062
TRUE RED

4127
NASTURTIUM

6595
GREEN GECKO

7364
TOTAL ECLIPSE

9001
WHITE



WOMEN'S RUNNER TEE

- 100% polyester
- Ventilation panel at back for maximum breathability
- Moisture wicking fabric - quick dry and high comfort
- Printed chevrons and logo

019208 : XS S M L XL



2001
BLACK

3062
TRUE RED

4127
NASTURTIUM

6595
GREEN GECKO

7364
TOTAL ECLIPSE

9001
WHITE



SUE SEAMLESS SPORTS TOP

- 92% polyamide, 8% elastane
- Ultra stretchable fabric
- Knitted logo
- Tight
- Seamless

009533 : XS/S M/L XL/2XL



SUE SEAMLESS TOP

- 92% polyamide, 8% elastane
- Ultra stretchable fabric
- Knitted logo
- Tight
- Seamless

009534 : XS/S M/L XL/2XL

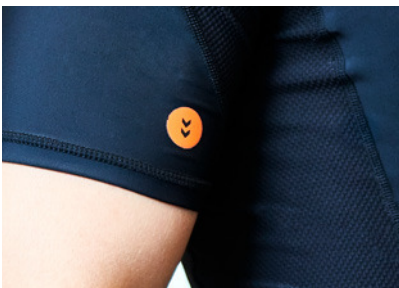


SUE SEAMLESS TIGHTS

- 92% polyamide, 8% elastane
- Ultra stretchable fabric
- Knitted logo
- Tight
- Seamless

011276 : XS/S M/L XL/2XL







CLASSIC BEE

THE STYLISH YET CASUAL ATHLEISURE COLLECTION

The Classic Bee collection is the comfortable range that combines versatile sportswear and athleisure trends with functional apparel for the everyday wardrobe. Consisting of timeless designs with multiple opportunity styles, the Classic Bee collection calls for active consumers who value comfortable yet stylish clothes that are trend-driven but easy to wear.

- ✦ **Comfortable basics in timeless designs**
- ✦ **Casual yet stylish design language**
- ✦ **Activewear for both light workouts and everyday use**



HMLBRICK T-SHIRT S/S

- 95% cotton, 5% elastane
- Jersey fabric
- Waterbased printed logo
- Transfer printed stripe
- Regular fit

200752 : 128 140 152 164
 200443 : S M L XL 2XL 3XL



HMLCOMFORT HOODIE

- 80% cotton, 20% polyester
- Sweat fabric
- Waterbased printed logo
- Transfer printed stripe
- Regular fit

200753 : 128 140 152 164
 200440 : S M L XL 2XL 3XL



CLASSIC BEE ZEN ZIP JACKET

- 80% cotton, 20% polyester
- Sweat fabric with brushed backside
- Waterbased print
- Regular fit

133310 : 128 140 152 164
 033310 : S M L XL 2XL 3XL



HMLCHARM ZIP JACKET

- Main: 90% polyester, 10% elastane / Insert: 100% polyester
- Main: sweat fabric / Insert: mesh fabric
- 3D logo and chevrons
- Zipper pockets
- Regular fit
- Ventilation

200227 : S M L XL 2XL 3XL



HMLCOMFORT SHORTS

- 80% cotton, 20% polyester
- Sweat fabric
- Waterbased printed logo and chevrons
- Regular fit

200755 : 128 140 152 164
200442 : S M L XL 2XL 3XL



2001
BLACK



2006
GREY MELANGE



HMLCOMFORT PANTS

- 80% cotton, 20% polyester
- Sweat fabric
- Waterbased printed logo and chevrons
- Regular fit

200754 : 128 140 152 164
200441 : S M L XL 2XL 3XL



2001
BLACK



2006
GREY MELANGE



2007
DARK GREY MELANGE



CLASSIC BEE ZEN PANTS

- 80% cotton, 20% polyester
- Sweat fabric with brushed backside
- Waterbased print
- Fake fly
- Regular fit

137130 : 128 140 152 164
037130 : S M L XL 2XL 3XL



2001
BLACK



2006
GREY MELANGE



HMLRICCI PANTS

- Main: 90% polyester, 10% elastane / Insert: 90% polyester, 10% elastane
- Main: woven fabric / Insert: mesh fabric
- 3D logo and chevrons
- Zipper pocket
- Fake fly
- Regular fit

200222 : S M L XL 2XL 3XL



2001
BLACK



CLASSIC BEE COTTON TEE

- 95% cotton, 5% elastane
- Jersey fabric
- Waterbased print
- Regular fit



108467 : 128 140 152 164
008467 : S M L XL 2XL 3XL



2006
GREY MELANGE

2042
BLACK/
BLACK

8744
SARGASSO SEA

CLASSIC BEE AAGE ZIP JACKET

- 69% cotton, 29% polyester, 2% elastane
- Sweat fabric
- Polyester backside for moisture transportation
- Embroidery logo
- Chevron tape
- Zipper pockets
- Regular fit



033390 : S M L XL 2XL 3XL



2001
BLACK

2006
GREY MELANGE

CLASSIC BEE PHI ZIP JACKET

- Main: 100% polyester / Insert: 100% polyester
- Main: interlock fabric / Insert: mesh fabric
- Silicone print
- Invisible zipper pockets
- Regular fit
- Ventilation



136866 : 152 164
036866 : S M L XL 2XL 3XL



2001
BLACK

2007
DARK GREY MELANGE

CLASSIC BEE AAGE SHORTS

- 69% cotton, 29% polyester, 2% elastane
- Sweat fabric
- Polyester backside for moisture transportation
- Embroidery logo
- Chevron tape
- Fake fly
- Regular fit



010810 : S M L XL 2XL 3XL



2001
BLACK



2006
GREY MELANGE



8744
SARGASSO SEA

CLASSIC BEE AAGE PANTS

- 69% cotton, 29% polyester, 2% elastane
- Sweat fabric
- Polyester backside for moisture transportation
- Embroidery logo
- Chevron tape
- Fake fly
- Regular fit



037110 : S M L XL 2XL 3XL



2001
BLACK



2006
GREY MELANGE



2007
DARK GREY MELANGE



8744
SARGASSO SEA

CLASSIC BEE PHI PANTS

- Main: 100% polyester / Insert: 100% polyester
- Main: interlock fabric / Insert: mesh fabric
- Silicone print
- Regular fit
- Ventilation



137170 : 152 164

037170 : S M L XL 2XL 3XL



2001
BLACK



2007
DARK GREY MELANGE

HMLNATHAN ZIP JACKET

- 95% micropolyester, 5% elastane
- Tricot fabric
- Embroidery logo
- Zipper pockets
- Regular fit

200769 : 140 152 164 176
200627 : S M L XL 2XL



2520
CAVIAR/
CAVIAR



HMLGUY SWEATSHIRT

- 80% polyester, 15% viscose, 5% elastane
- Interlock fabric
- 3D logo and chevrons
- Regular fit

200176 : S M L XL 2XL 3XL



2006
GREY MELANGE



HMLGUY ZIP HOOD

- 80% polyester, 15% viscose, 5% elastane
- Interlock fabric
- 3D logo and chevron
- String in hood
- Regular fit

200756 : 128 140 152 164
200175 : S M L XL 2XL 3XL



2001
BLACK



2006
GREY MELANGE



HMLGUY ZIP JACKET

- 80% polyester, 15% viscose, 5% elastane
- Interlock fabric
- 3D logo and chevrons
- Regular fit

200174 : S M L XL 2XL 3XL



2001
BLACK



2006
GREY MELANGE



HMLNATHAN PANTS

- 95% micropolyester, 5% elastane
- Tricot fabric
- Embroidery logo
- Zipper pockets
- No pockets in kids sizes
- Regular fit

200770 : 140 152 164 176
200629 : S M L XL 2XL



2520
CAVIAR/
CAVIAR

HMLGUY SHORTS

- 80% polyester, 15% viscose, 5% elastane
- Interlock fabric
- 3D logo and chevrons
- Invisible zipper pocket at back
- Regular fit

200178 : S M L XL 2XL 3XL



2006
GREY MELANGE

HMLGUY PANTS

- 80% polyester, 15% viscose, 5% elastane
- Interlock fabric
- 3D logo and chevrons
- Regular fit

200757 : 128 140 152 164
200177 : S M L XL 2XL 3XL



2001
BLACK



2006
GREY MELANGE

CLASSIC BEE NOAH POLO

- 50% polyester, 50% cotton
- Pique fabric
- Embroidery logo
- Jaquard stripes in collar and sleeve hem
- Slit at sideseams
- Regular fit



019146 : S M L XL 2XL 3XL



HMLFLINT T-SHIRT S/S

- 95% cotton, 5% elastane
- Jersey fabric
- Waterbased printed logo
- Regular fit



200444 : S M L XL 2XL 3XL



HMLFLINT T-SHIRT L/S

- 95% cotton, 5% elastane
- Jersey fabric
- Waterbased printed logo and chevrons
- Regular fit



200445 : S M L XL 2XL 3XL



HMLJET T-SHIRT S/S

- 65% lyocell, 35% cotton
- Jersey fabric
- 3D logo and chevron
- Regular fit

200180 : S M L XL 2XL 3XL



HMLGLAY T-SHIRT S/S

- 65% polyester, 35% cotton
- Injected slub jersey fabric
- 3D logo
- Waterbased printed chevrons
- Regular fit

200182 : S M L XL 2XL 3XL



HMLGLAY T-SHIRT L/S

- 65% polyester, 35% cotton
- Injected slub jersey fabric
- 3D logo
- Waterbased printed chevrons
- Regular fit

200181 : S M L XL 2XL 3XL



CLASSIC BEE FAUNA SS TEE

- 50% cotton, 50% polyester
- Jersey fabric
- Waterbased print at the backside of the fabric
- Loose

019239 : XS S M L XL 2XL



9001
WHITE



HMLPERLA T-SHIRT S/S

- 95% cotton, 5% elastane
- Jersey fabric
- Waterbased printed logo
- Transfer printed stripe
- Regular fit

200437 : XS S M L XL 2XL



2001
BLACK

2006
GREY MELANGE

9001
WHITE



HMLLEISURELY HOODIE

- 80% cotton, 20% polyester
- Sweat fabric
- Waterbased printed logo
- Transfer printed stripe
- Regular fit

200438 : XS S M L XL 2XL



2001
BLACK

2006
GREY MELANGE

2007
DARK GREY MELANGE

8744
SARGASSO SEA



CLASSIC BEE WOMEN ZEN ZIP JACKET

- 80% cotton, 20% polyester
- Sweat fabric with brushed backside
- Waterbased print
- Regular fit

033320 : XS S M L XL 2XL



2001
BLACK

2006
GREY MELANGE



CLASSIC BEE WOMENS TECH SHORTS

- 66% cotton, 29% polyester, 5% elastane
- Sweat fabric
- Polyester on backside for moisture transportation
- Waterbased print
- Regular fit
- BeeCool

010760 : XS S M L XL 2XL



2001
BLACK



2006
GREY MELANGE



CLASSIC BEE WOMENS TECH PANTS

- 66% cotton, 29% polyester, 5% elastane
- Sweat fabric
- Polyester on backside for moisture transportation
- Waterbased print
- Invisible zipper pocket
- Slim
- BeeCool

039720 : XS S M L XL 2XL



2001
BLACK



2006
GREY MELANGE



2007
DARK GREY MELANGE



HMLLEISURELY PANTS

- 80% cotton, 20% polyester
- Sweat fabric
- Waterbased printed logo and chevrons
- Regular fit

200439 : XS S M L XL 2XL



2001
BLACK



2006
GREY MELANGE



2007
DARK GREY MELANGE



CLASSIC BEE WOMENS ZEN PANTS

- 80% cotton, 20% polyester
- Sweat fabric with brushed backside
- Waterbased print
- Regular fit

037140 : XS S M L XL 2XL



2001
BLACK



2006
GREY MELANGE



HMLCLIO ZIP JACKET

- 80% polyester, 15% viscose, 5% elastane
- Interlock fabric
- 3D logo and chevrons
- Zipper pockets
- Regular fit



200170 : XS S M L XL 2XL



2001
BLACK

2006
GREY MELANGE

HMLCLIO ZIP HOOD

- 80% polyester, 15% viscose, 5% elastane
- Interlock fabric
- 3D logo and chevrons
- Regular fit



200171 : XS S M L XL 2XL



2006
GREY MELANGE

HMLCLIO PANTS

- 80% polyester, 15% viscose, 5% elastane
- Interlock fabric
- 3D logo and chevrons
- Zipper pockets
- Regular fit



200173 : XS S M L XL 2XL



2001
BLACK

2006
GREY MELANGE

CLASSIC BEE CI SEAMLESS TOP

- 52% polyamide, 42% polyester, 6% elastane
- Ultra stretchable fabric
- Tight
- Seamless
- Anti bacterial
- BeeCool



019238 : XS/S M/L XL/2XL



2508
BLACK MELANGE



8716
OMBRE BLUE
MELANGE

CLASSIC BEE CI SEAMLESS TIGHTS

- 52% polyamide, 42% polyester, 6% elastane
- Ultra stretchable fabric
- Tight
- Seamless
- Anti bacterial
- BeeCool



011336 : XS/S M/L XL/2XL



2508
BLACK MELANGE



8716
OMBRE BLUE
MELANGE

HMLEDIT TIGHTS

- Main: 86% polyester, 14% elastane / Insert: 90% polyester, 10% elastane
- Main: jersey fabric / Insert: woven fabric
- 3D logo
- Lacer cut chevrons
- Invisible zipper pocket
- Tight
- Ventilation
- Flexibility
- BeeCool



200303 : XS S M L XL 2XL



2001
BLACK

CLASSIC BEE WOMEN PHI ZIP JACKET

- Main: 100% polyester / Insert: 100% polyester
- Main: interlock fabric / Insert: mesh fabric
- Silicone print
- Invisible zipper pockets
- Regular fit
- Ventilation

036868 : XS S M L XL 2XL



2001
BLACK

2007
DARK GREY MELANGE



HMLNELLY ZIP JACKET

- 95% micropolyester, 5% elastane
- Tricot fabric
- Embroidery logo
- Zipper pockets
- Regular fit

200765 : 140 152 164 176
200626 : XS S M L XL



2520
CAVIAR/
CAVIAR



HMLPIPER ZIP JACKET

- Main: 90% polyester, 10% elastane / Insert: 100% polyester
- Main: sweat fabric / Insert: mesh fabric
- 3D logo and chevrons
- Zipper pockets
- Regular fit
- Ventilation

200230 : XS S M L XL 2XL



8997
SARGASSO SEA
MELANGE



HMLSOPHIA TIGHTS

- 90% polyester, 10% elastane
- Jersey fabric
- Rubber printed logo and chevrons
- Tight
- Flexibility
- BeeCool

200434 : XS S M L XL 2XL



2001
BLACK



CLASSIC BEE WOMEN PHI PANTS

- Main: 100% polyester / Insert: 100% polyester
- Main: Interlock fabric / Insert: mesh fabric
- Silicone print
- Regular fit
- Ventilation



037180 : XS S M L XL 2XL



HMLNELLY PANTS

- 95% micropolyester, 5% elastane
- Tricot fabric
- Embroidery logo
- No pockets in kids sizes
- Regular fit



200768 : 140 152 164 176
200628 : XS S M L XL



HMLPIPER PANTS

- Main: 90% polyester, 10% elastane / Insert: 100% polyester
- Main: sweat fabric / Insert: mesh fabric
- 3D logo
- Zipper pockets
- Regular fit
- Ventilation



200231 : XS S M L XL 2XL



CLASSIC BEE LOGO LEGGINGS

- 92% cotton, 8% elastane
- Jersey fabric
- Waterbased print
- Tight



011500 : XS S M L XL 2XL



HMLASSER JACKET

- Main: 75% nylon, 25% polyester / Insert: 100% polyester
- Main: woven fabric / Insert: bonded fleece fabric
- WP3000/MVP3000
- 3D logo and chevrons
- Placket with zipper garage at center front
- Regular fit
- Waterproof



200495 : XS S M L XL 2XL 3XL



2508
BLACK MELANGE



8997
SARGASSO SEA
MELANGE

CLASSIC BEE JOJO JACKET

- Main: 100% polyester / Insert and cuff: 90% nylon, 10% elastane / Lining: 100% polyester
- Main: woven fabric / Insert and cuff: stretchable woven fabric
- Printed logo
- Placket with zipper garage at center front
- Invisible zipper pockets
- Regular fit



080907 : S M L XL 2XL 3XL



2001
BLACK

HMLADAM ZIP HOOD

- 100% polyester
- Bonded fleece fabric
- Embroidery logo
- Regular fit



200532 : 128 140 152 164

200512 : S M L XL 2XL 3XL



2001
BLACK



8744
SARGASSO SEA

CLASSIC BEE FENG JACKET

- Embroidery logo
- Placket with zipper garage at center front
- Regular fit
- Water repellent

080905 : S M L XL 2XL 3XL



2001
BLACK

2508
BLACK MELANGE



HMLESKE JACKET

- Main: 100% polyester / Insert: 100% polyester / Lining: 100% polyester / Padding: 100% polyester
- Main: woven fabric / Inserts: mesh fabric bonded with fleece
- Printed logo
- Zipper pockets
- Placket with zipper garage at center front
- Regular fit

200493 : S M L XL 2XL 3XL



2001
BLACK

8744
SARGASSO SEA



CLASSIC BEE ZAIN JACKET

- Main: 100% polyester / Sleeve, insert and collar: 90% polyester, 10% elastane / Lining: 100% polyester / Padding: 100% polyester
- Main: woven fabric / Sleeve, insert and collar: bonded fleece fabric with brushed backside
- Printed logo
- Placket with zipper garage at center front
- Regular fit
- Water repellent

080909 : S M L XL 2XL 3XL



2001
BLACK



HMLDALIA JACKET

- Main: 75% nylon, 25% polyester / Insert: 100% polyester
- Main: woven fabric / Insert: bonded fleece fabric
- WP3000/MVP3000
- 3D logo and chevrons
- Placket with zipper garage at center front
- Slim
- Waterproof



200494 : XS S M L XL 2XL



2508
BLACK MELANGE

8997
SARGASSO SEA
MELANGE

CLASSIC BEE WOMEN JOJO JACKET

- Main: 100% polyester / Insert and cuff: 90% nylon, 10% elastane / Lining: 100% polyester
- Main: woven fabric / Insert and cuff: stretchable woven fabric
- Printed logo
- Placket with zipper garage at center front
- Invisible zipper pockets
- Slim



080906 : XS S M L XL 2XL



2001
BLACK

HMLEVA ZIP HOOD

- 100% polyester
- Bonded fleece fabric
- Embroidery logo
- Regular fit



200513 : XS S M L XL 2XL



2001
BLACK

8744
SARGASSO SEA

CLASSIC BEE WOMEN FENG JACKET

- Main: 100% nylon / Lining: 100% polyester / Padding: 100% polyester
- Embroidery logo
- Placket with zipper garage at center front
- Slim
- Water repellent



080904 : XS S M L XL 2XL



2001
BLACK

2508
BLACK MELANGE

HMLBABETTE JACKET

- Main: 100% polyester / Insert: 100% polyester / Lining: 100% polyester / Padding: 100% polyester
- Main: woven fabric / Inserts: mesh fabric bonded with fleece
- Printed logo
- Zipper pockets
- Placket with zipper garage at center front
- Slim



200492 : XS S M L XL 2XL



2001
BLACK

8744
SARGASSO SEA

CLASSIC BEE WOMEN ZAIN JACKET

- Main: 100% polyester / Sleeve, insert and collar: 90% polyester, 10% elastane / Lining: 100% polyester / Padding: 100% polyester
- Main: woven fabric / Sleeve, insert and collar: bonded fleece fabric with brushed backside
- Printed logo
- Placket with zipper garage at center front
- Slim
- Water repellent



080908 : XS S M L XL 2XL



2001
BLACK







KIDS ACTIVE— WEAR

THE FUNCTIONAL COLLECTION FOR ACTIVE AND PLAYFUL KIDS

The Kids Activewear range enables kids to run, dance, climb and be active all day long. Designed in collaboration with internationally acclaimed gymnastics team Flying Superkids, the styles provide ultimate comfort and ease of movement. Soft and durable materials highlight activity – and the heritage-based design language and wide variety of bestselling silhouettes ensure a stylish expression.

- ✦ **Multi-purpose activewear**
- ✦ **Heritage hummel and bestselling silhouettes**
- ✦ **Basic styles suitable for an all-day active lifestyle**
- ✦ **Tested and perfected in cooperation with Flying Superkids**

HMLJAKI T-SHIRT S/S

- 60% cotton, 40% polyester, jersey,
- Standard 100 by OEKO-TEX
- Front print
- Chevron print at sleeves
- Regular fit

201165 : 104 110 116 122 128 140 152 164



HMLBOYS T-SHIRT L/S

- 58% cotton 37% polyester 5% elastane, jersey, melange body
- 95% cotton 5% elastane, jersey, sleeves
- Standard 100 by OEKO-TEX
- Logo print
- Chevron print at sleeves
- Regular fit

201164 : 104 110 116 122 128 140 152 164



HMLHERI SHORTS

- 51% cotton 42% polyester 7% elastane, sweat, melange
- Quick dry treatment
- Chevron print
- Elastic in waist
- Regular fit

200044 : 104 110 116 122 128 140 152 164



HMLKITBAG

- 100% polyester, woven
- Chevron print
- Polyester string

200058 : ONE SIZE



HMLKILLIAN ZIP JACKET

- 80% cotton 20% polyester, sweat
- Single jersey lining in hood
- Standard 100 by OEKO-TEX
- Logo embroidery
- Chevron print

- Thumbhole at cuff
- Regular fit

201162 : 104 110 116 122 128 140 152 164



2800 MEDIUM MELANGE
7364 TOTAL ECLIPSE



HMLGRAND ZIP JACKET

- 50% cotton 50% polyester, sweat
- Chevron embroidery
- Chevron tape
- Regular fit

200059 : 104 110 116 122 128 140 152 164



7364 TOTAL ECLIPSE



KESS HOODIE NOOS

- 80% cotton 20% polyester, sweat
- Single Jersey lining in hood
- Standard 100 by OEKO-TEX
- Chevron print
- Logo print
- Regular fit

133926 : 104 110 116 122 128 140 152 164



2800 MEDIUM MELANGE
3163 RUMBA RED
7364 TOTAL ECLIPSE



HMLTHIM SHORTS

- 100% polyester, mesh
- Quick dry treatment
- Chevron print
- Elastic in waist
- Regular fit

201166 : 104 110 116 122 128 140 152 164



7364
TOTAL ECLIPSE



HMLGRAND PANTS

- 50% cotton 50% polyester, sweat
- Chevron embroidery
- Chevron tape
- Elastic in waist
- Regular fit

200060 : 104 110 116 122 128 140 152 164



7364
TOTAL ECLIPSE



KESS PANTS NOOS

- 80% cotton 20% polyester, sweat
- Standard 100 by OEKO-TEX
- Elastic in waist
- Chevron print
- Logo embroidery
- Regular fit

137745 : 104 110 116 122 128 140 152 164

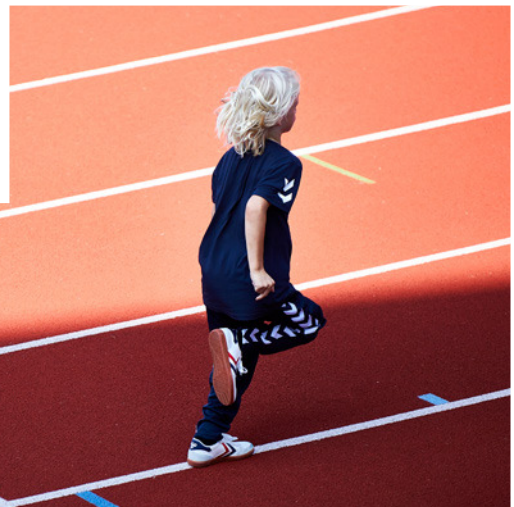


2800
MEDIUM MELANGE



7364
TOTAL ECLIPSE







SOCKS & ACCESSORIES

PERFECT FUNDAMENTALS FOR A GOOD GAME

No matter the level and no matter the sport, players need the right fundamentals to ensure a top performance. From socks to wristbands, resin gel to ball pumps and towels to gloves, our Socks & Accessories collection offers a wide range of basics – in all sizes and in a wide array of colours.

- ✦ **Functional basics for enhanced support and performance**
- ✦ **Necessities for every sport**
- ✦ **Multiple colour options and sizes**

FUNDAMENTAL 3-PACK SOCK

- 80% Cotton / 17% Polyamide / 3% Elastane
- Moisture Management
- Arch support

022140 : 8 (32-35) 10 (36-40) 12 (41-45) 14 (46-48)



2001
BLACK

9001
WHITE



3-PACK BASIC SOCK

- 80% cotton/20% polyester
- Mid-calf length with contrasting chevrons

022030 : 8 (32-35) 10 (36-40) 12 (41-45) 14 (46-48)



2001
BLACK

9001
WHITE



ANKLE SOCK SMU

- 80% cotton/17% polyamid/3% elastane
- Rib effect at mid-foot to give snug fit
- Size knitted into the sock

022129 : 8 (32-35) 10 (36-40) 12 (41-45) 14 (46-48)



2114
BLACK/
WHITE

2654
CASTLE ROCK/
BLACK

4067
BRIGHT ROSE/
WHITE

6597
GREEN GECKO/
BLACK

8367
ATOMIC BLUE/
WHITE

9124
WHITE/
BLACK



TECH INDOOR SOCK LOW

- 77% Polyamide / 10% Cotton / 10% Polyester / 3% Elastane
- Moisture management
- Antibacterial treatment in the heel and toe
- Padded heel and toe for protective cushioning from high-impact pressure
- Arch Support
- Enhanced fit

021074 : 8 (32-35) 10 (36-40) 12 (41-45) 14 (46-48)



TECH INDOOR SOCK HIGH

- 77% Polyamide / 10% Cotton / 10% Polyester / 3% Elastane
- Moisture management
- Antibacterial treatment in the heel and toe
- Padded heel and toe for protective cushioning from high-impact pressure
- Arch Support
- Enhanced fit

021075 : 8 (32-35) 10 (36-40) 12 (41-45) 14 (46-48)



TECH PERFORMANCE SOCK

- 87% Polyamide / 5% Cotton / 5% Polyester / 3% Elastane
- Moisture management
- Antibacterial treatment in the heel and toe
- Airflow mesh
- Arch Support
- Enhanced fit

021077 : 8 (32-35) 10 (36-40) 12 (41-45) 14 (46-48)



COMPRESSION SOCK

- 97% Polyamide (microfibre) / 3% Elastane
- Moisture management
- Graduated Compression
- Muscle support
- Protective cushioning in the toe and heel



022139 : 1 (25-31 CM) 2 (32-38 CM) 3 (39-44 CM) 4 (45-50 CM)



1021
BLACK/
SHOCKING ORANGE

4029
SHOCKING ORANGE/
WHITE

PERFORMANCE 2-PACK SOCK

- 87% Polyamide / 5% Cotton / 5% Polyester / 3% Elastane
- Moisture management
- Antibacterial treatment in the heel and toe
- Arch Support
- Enhanced fit



021076 : 8 (32-35) 10 (36-40) 12 (41-45) 14 (46-48)



1078
BLACK/
DARK SLATE

9363
WHITE/
LIGHTER MONUMENT

PRO FOOTBALL SOCK

- 82% Polyamid / 6% Polyester / 6% Cotton / 6% Elastane
- Moisture management
- Padded ankle protection
- Reinforced heel, toe and ankle section to help shock absorption
- Arch support
- Applies to UEFA and FIFA regulations
- Tight

201160 : 8 (32-35) 10 (36-40) 12 (41-45) 14 (46-48)



FUNDAMENTAL FOOTBALL SOCK

- 92% Polyamide / 5% Cotton / 3% Elastane
- Moisture management
- Padded Ankle Protection
- Reinforced heel, toe and ankle sections to help shock absorption
- Arch Support
- Airflow mesh

022137 : 6 (28-31) 8 (32-35) 10 (36-40) 12 (41-45) 14 (46-48)



FUNDAMENTAL FOOTBALL SOCK FOOTLESS

- 97% Polyamide / 3% Elastane
- Moisture management
- Elasticated Stirrup
- Airflow mesh

022138 : 1 (JUNIOR) 2 (SENIOR)



TRAINING HAT

- 50% wool/50% acrylic knit
- Fold-up cuff and embroidered chevrons



089061 : ONE SIZE



2001
BLACK

TRAINING BEANIE

- 100% acrylic
- Embroidered chevrons



089441 : ONE SIZE



2001
BLACK

LIGHT WEIGHT PLAYER GLOVES

- 100% polyester
- Silicon-fused grip detail
- Embroidered chevrons



041441 : 2XS XS S M L XL



2001
BLACK

COLD WINTER PLAYER GLOVES

- 100% polyester fleece
- Silicon-fused grip detail
- Wristband-strap with velcro closure
- Embroidered chevrons



041442 : 2XS XS S M L XL



2001
BLACK

BASIC CAP

- 100% polyester
- Light-weight cap
- Adjustable strap on back
- Airhole ventilation
- Buckle CB to adjust size

089066 : ONE SIZE



2001
BLACK



FUNDAMENTAL TRAINING BIB

- 100% polyester
- Mesh bib with contrasting seam binding
- Contrasting hummel print on center front

105002 : 8 (MINI)
005002 : S (JUNIOR) XL (SENIOR)



5009
NEON YELLOW



5179
NEON ORANGE



6057
NEON GREEN



7649
NEON BLUE



9001
WHITE



OLD SCHOOL CAPTAINS BAND

- 94% polyester/ 6% rubber
- Single colour armband with printed logo

099164 : ONE SIZE



5067
FLOURECENT GREEN/
BLACK



7268
MARINE/
SILVER



OLD SCHOOL SMALL WRISTBAND

- 95% cotton, 5% lycra
- Terry loop sweatbands with embroidered logo
- Sort. 10 pcs per colour
- Price listed is per piece

099015 : ONE SIZE



OLD SCHOOL BIG WRISTBAND

- 95% cotton, 5% lycra
- Terry loop sweatbands with embroidered logo
- Sort. 10 pcs per colour
- Price listed is per piece

099014 : ONE SIZE



OLD SCHOOL SMALL TOWEL

- 100% cotton terry
- Old school jaquard knitted towel with logo

025064 : ONE SIZE



2001 BLACK
8744 SARGASSO SEA



OLD SCHOOL BIG TOWEL

- 100% cotton terry
- Old school jaquard knitted towel with logo

025065 : ONE SIZE



2001 BLACK
8744 SARGASSO SEA



BALL PUMP

- Double action ball pump
- Flexible extendable tube
- Metal vinyl
- Integrated vinyl storage
- One size



099000 : ONE SIZE



2001
BLACK

VALVE OIL

- Use before inflating your hummel ball
- 1-2 drops in valve to avoid leakage/drying valve
- Price listed is per piece
- Sort. 5 pcs.

099299 : 10 ML



9001
WHITE



RESIN REMOVER

- Removes all types of resin
- Creamy consistency
- Price listed is per piece
- Sort. 4 pcs.

099298 : 500 ML



9001
WHITE



NATURAL RESIN

- Contents: nature resin, vegetable oils
- Price listed is per piece
- Sort. 8 pcs.

099296 : 100 ML



9001
WHITE



NATURAL RESIN

- Contents: nature resin, vegetable oils
- Price listed is per piece
- Sort. 4 pcs.

099302 : 500 ML



9001
WHITE



RESIN GEL

- Contents: nature resin, vegetable oils and thickening agent
- Price listed is per piece
- Sort. 8 pcs.

099297 : 100 ML



9001
WHITE



RESIN GEL

- Contents: nature resin, vegetable oils and thickening agent
- Price listed is per piece
- Sort. 4 pcs.

099303 : 500 ML



9001
WHITE





EQUIPMENT BAGS

FUNCTIONAL BAGS FOR EVERYONE

Functional and versatile bags are a must for every player and athlete. hummel offers a variety of designs, sizes and colours – all with a variety of functional details. They feature handles and/or straps for easy carrying, large and small compartments with and without zippers, quality print, compression straps for adjustable sizing and waterproof, fold-over raincoats.

- ✦ **Functional bags at an affordable price**
- ✦ **Compression straps and handles for adjustable sizing**
- ✦ **Waterproof fold-over raincoats**
- ✦ **A variety of compartments for every need**

AUTHENTIC CHARGE SPORTS BAG

- 100% Polyester, woven fabric
- Lining: 100% Polyester
- Printed logos and chevrons
- Diagonal coated contrast for water repellency
- Hidden piping detail
- Bottom stabilizer and inside zip pocket
- Adjustable shoulder strap

- Carry handles with padded handle gathering (except size XS)
- End pocket for ball (except size XS)
- **XS Size:** L40 x W20 x H23 cm, 20 liter - Max weight: 4 kg
- **S Size:** L50 x W24 x H26 cm, 31 liter - Max weight: 6 kg
- **M Size:** L60 x W27 x H28 cm, 45 liter - Max weight: 9 kg
- **L Size:** L65 x W32 x H33 cm, 68 liter - Max weight: 12 kg

200910 : XS S M L



AUTHENTIC CHARGE SOCCER BAG

- 100% Polyester, woven fabric
- Lining: 100% Polyester
- Printed logo and chevrons
- Diagonal coated contrast for water repellency
- Hidden piping detail
- Bottom compartment with room for shoes or wet items

- Adjustable shoulder strap
- Carry handles with padded handle gathering
- Inside zip pocket
- **S Size:** L41 x H35 x W26 cm, 37 liter - Max weight: 6 kg
- **L Size:** L53 x H40 x W31 cm, 65 liter - Max weight: 10 kg

200911 : S L



AUTHENTIC CHARGE TROLLEY

- 100% Polyester, woven fabric
- Lining: 100% Polyester
- Printed logo and chevrons
- Piping detail
- 2 inside mesh compartments (only 1 mesh compartment in size X)
- Carrying handles with padded handle gathering (except size S)

- Extension handle
- Two wheel trolley option
- **S Size:** L55 x W35 x H23 cm, 44 liters - max weight 10 kg
- **M Size:** L60 x W35 x H31 cm, 65 liters - max weight 14 kg
- **L Size:** L75 x W35 x H34 cm, 89 liters - max weight 17 kg

200917 : S M L



AUTHENTIC CHARGE TEAM SPORTS BAG

- 100% Polyester, woven fabric
- 100% Polyester, woven fabric
- Lining: 100% Polyester
- Printed logos and chevrons
- Diagonal coated contrast for water repellency

- Hidden piping detail
- Bottom stabilizer
- Adjustable shoulder strap with padded shoulder protection
- Carry handles with padded handle gathering
- **Size:** L80 x W42 x H35 cm, 118 liter - Max weight: 25 kg

200914 : ONE SIZE



AUTHENTIC CHARGE BACK PACK

- 100% Polyester, woven fabric
- Lining: 100% Polyester
- Printed logos and chevrons
- Diagonal coated contrast for water repellency
- Hidden piping detail
- Laptop compatible

- Padded backside and backstraps
- Adjustable chest strap
- Stretchable mesh side pockets
- Carry handle
- **Size:** H42 x W30 x D17,5 cm, 22 liter - Max weight: 8 kg



200912 : ONE SIZE



2001
BLACK

8744
SARGASSO SEA

AUTHENTIC CHARGE BALL BACK PACK

- 100% Polyester, woven fabric
- Lining: 100% Polyester
- Printed logos and chevrons
- Coated contrast for water repellency
- Hidden piping detail
- Laptop compatible
- Padded backside and backstraps

- Adjustable chest strap
- Expandable side pockets at both sides
- Small front pocket
- Mesh net for ball storage in front compartment
- Carry handle
- **Size:** H42 x W30 x D15 cm, 19 liter - Max weight: 8 kg



200913 : ONE SIZE



2001
BLACK

8744
SARGASSO SEA

AUTHENTIC CHARGE BALL BAG

- 100% Polyester, woven fabric
- Mesh
- Printed logo and chevrons
- Drawstring for closure

- Fabric bottom with piping detail
- **Size:** H60 X D53, 132 liter - Max weight: 8 kg
- Fits 10 footballs



200915 : ONE SIZE



2001
BLACK

HUMMEL BALL NET

- 100% Polyethylene, name tag: 100% polyester,
- woven fabric
- Drawstring for closure
- Name tag attached to string
- Fits 19 footballs
- Max weight: 9kg

040918 : ONE SIZE



2250
BLACK/
SILVER



AUTHENTIC CHARGE GYM BAG

- 100% Polyester, woven fabric
- Lining: 100% Polyester
- Printed logo & chevrons
- Drawstring closure & backstraps
- Zip pocket
- **Size:** H44 x W35 x D3 cm, 5 liter - Max weight 5 kg

200918 : ONE SIZE



2001 BLACK 6102 EVENING PRIMROSE 8744 SARGASSO SEA



TECH MOVE BACK PACK

- 100% Polyester, woven fabric
- Lining: 100% Polyester
- Printed logo and chevrons
- Top loading with flap and drawstring closure
- Zip pocket in top flap
- Laptop compatible
- Padded backside and back straps
- Expandable pockets at both sides
- 2 small front pockets
- **Size:** H42 x W32 x D19 cm, 26 liter - Max weight: 12 kg

200920 : ONE SIZE



2001 BLACK 8744 SARGASSO SEA



TECH MOVE SPORTS BAG

- 100% Tarpaulin
- Lining: 100% Polyester
- Printed logo
- Adjustable shoulder strap with clip for carrying behind your back
- Padded shoulder support
- Inside pocket for wet storage
- Inside & outside zip pocket
- Carry handles
- **M Size:** L50 x W28 x H23 cm, 33 liter - Max weight: 10 kg
- **L Size:** L60 x W33 x H25 cm, 50 liter - Max weight: 13 kg

200919 : M L



2001 BLACK 8744 SARGASSO SEA



AUTHENTIC SPORTS BAG

- 100% Polyester, woven fabric
- Lining: 100% Polyester
- Printed logos and chevrons
- Piping detail
- Bottom stabilizer and inside zip pocket
- Carrying handles
- Adjustable, detachable shoulder strap
- Shoulder protective pad
- End pocket (Except on size XS)
- **XS Size:** L40 x W23 x H21 cm, 14 liter - Max weight: 3 kg
- **S Size:** L50 x W27 x H23 cm, 23 liter, Max weight: 5 kg
- **M Size:** L60 x W31 x H27 cm, 38 liter, Max weight: 8 kg
- **L Size:** L66 x W37 x H32 cm, 59 liter, Max weight: 10 kg

040957 : XS S M L



1616 BLACK/SILVER 2250 BLACK/SILVER 7079 TRUE BLUE/BLACK 8631 PATRIOT BLUE/VIRTUAL PINK



AUTHENTIC TOILETRY BAG

- 100% Polyester, woven fabric
- Lining: 100% Polyester
- Piping detail
- Printed logo
- Opens completely with hook for hanging
- Inside mesh pocket

- Inside zip pocket
- Carrying handle
- 4,3 liter
- Max weight: 3 kg
- H21 * W23 * D9 cm

040965 : ONE SIZE



2250
BLACK/
SILVER



LUGO BIG WEEKEND BAG

- Main: 100% pu / Lining: 100% polyester
- Printed logo
- Piping details
- Detachable grosgrain shoulderstrap
- YKK zipper outside

- Zipper pocket inside
- Mobile pocket inside
- Max weight: 70 kg
- L: 50 cm, H: 39 cm, W: 23 cm

040995 : ONE SIZE



2001
BLACK



JET MEDIUM WEEKEND BAG

- Main: 100% pu / Lining: 100% polyester
- Printed logo
- Piping details
- Detachable grosgrain shoulderstrap
- YKK zipper outside

- Zipper pocket inside
- Mobile pocket inside
- Max weight: 60 kg
- L: 48 cm, H: 40 cm, W: 20 cm

040997 : ONE SIZE



2001
BLACK



TOTE TOILETRY

- Main: 100% pu / Lining: 100% polyester
- Printed logo
- Piping details
- Grosgrain strap
- YKK zipper
- Max weight: 20 kg
- L: 26 cm, H: 15 cm, W: 13 cm

040998 : ONE SIZE



2001
BLACK



HAND — BALLS

FROM PROFESSIONAL TO PRACTICE BALLS, HUMMEL OFFERS A DIVERSE RANGE FOR ALL KINDS OF PLAYERS AND TEAMS.

Reliable handballs with predictable flight and a good bounce are essential. hummel offers a competitive range of quality handballs – from high-performance match balls to training balls for children. All handballs are made from durable PU (Polyurethane). Most of the balls also feature these three crucial elements:

- ✦ **AirTouch cushioning for extra softness and bounce**
- ✦ **Woven poly/cotton lining that stabilizes and adjusts softness/weight**
- ✦ **Latex bladder with AirTrap valve for an airtight ball**

HYBRID BALLS



STORM PRO

High performance match & training ball

This glued hybrid-ball is created for extra softness and speed. This elite handball has IHF approval and works well for playful players with lots of tricks.



STORM

High performance match & training ball

A fast and soft hybrid-ball that is a favourite among elite female and youth players that value playful games with lots of tricks.

HAND STITCHED BALLS



CONCEPT+

The professional match ball

Approved by the IHF, this elite ball for professional players has a spongy surface for perfect grip.



PREMIER

Match & Training ball

With a soft layer of foam instead of the AirTouch cushioning, this is the ball for quick youth players who value hard balls.



CONCEPT

The professional training ball

With a slightly thinner PU, the Concept ball is a professional ball suitable for both elite training and high-level matches.



ARENA

Match & Training ball

Entry-level training ball at an affordable price. Not suitable for resin use and therefore mostly a training ball.



ELITE

High Performance Match & Training Ball

With its soft surface, the Elite ball is a favourite among elite female and youth players who use it as both a match and training ball.

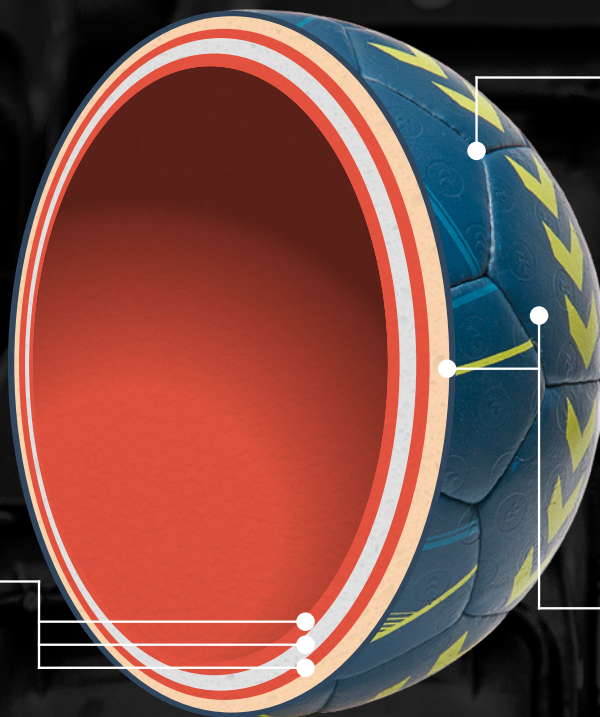


KIDS

Specially created for children

With the soft AirTouch surface, this children's ball is created with the smallest players in mind. Not suitable for resin use, it is a durable ball with good grip.

HYBRID HANDBALLS



STRONG HYBRID CONSTRUCTION

Hybrid handballs are extra strong and durable. All PU hexagons are machine-stitched and glued together before being hardened under compression giving a super smooth surface and a perfect roundness.

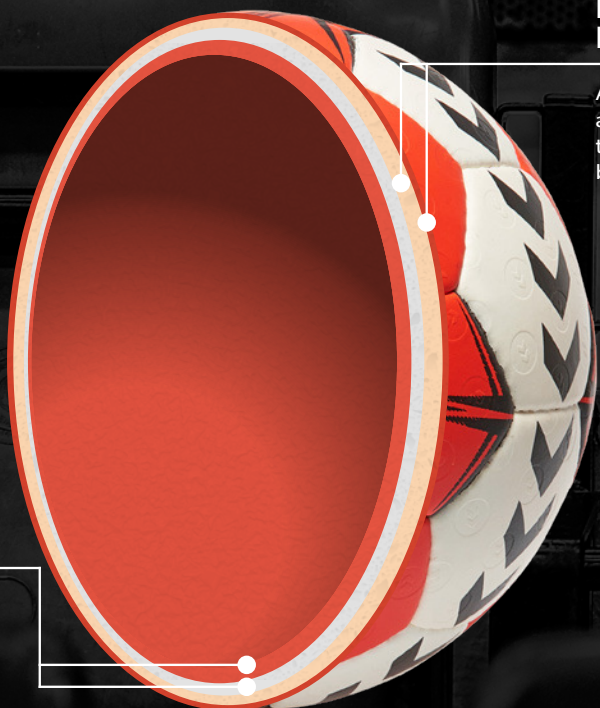
UNIQUE DOUBLE BLADDER CONSTRUCTION

Inner and outer rubber bladders reinforced by a cotton and polyester lining for a perfect mix of bounce and stability. The inner bladder makes your ball vivid and bouncy, while the unique second bladder takes the bounce to new heights!

THICK FOAM-BACKED PU SURFACE

With Air Touch foam to back a thick PU surface, you're sure to experience extra softness and a better grip. The PU of Storm Pro has even been upgraded with a microfiber padding providing a whole new dimension of softness.

REGULAR HANDBALLS



FOAM-BACKED PU SURFACE

All PU hexagons are hand-stitched and backed with foam of different thicknesses depending on the type of ball best suited for your game plan.

TRADITIONAL RUBBER BLADDER

Inner rubber bladder covered by a white cotton and polyester lining giving you a great mix of bounce and stability when you set your ball in motion.

HANDBALL INFLATION GUIDE

PREPARATION

During wintertime, we suggest to store the handballs at room temperature (20 – 25°C) for minimum 24 hours before the first inflation in order to secure optimal softness, shape and grip.

VALVE OIL

Drip 1 – 2 drops of hummel valve oil into the valve.
It is important that valve-oil is used at every inflation as it makes the valve seal properly.

INFLATE

Position the valve upwards and insert the inflation needle straight into the valve. Always use a long pump needle to ensure the needle does not damage the valve or the bladder.

CHECK PRESSURE

- Inflate the ball to the recommended pressure.
- Recommended pressure is printed on the ball near the valve.
- Inflate slowly to allow the ball to gain its correct shape. Rapid inflation can damage the bladder.
- Use a pressure gauge to check the pressure of the ball.

HANDBALL MAINTENANCE GUIDE

BEFORE EACH INFLATION

Always drip 1 – 2 drops of hummel valve oil into the valve before inflation to ensure that it seals properly.

STORAGE

Store the handball in a ventilated room at 20 – 25°C.

WEIGHT AND CIRCUMFERENCE OF HANDBALLS

SIZE	CIRCUMFERENCE	WEIGHT	RECOMMENDED PRESSURE (BAR)
3	58–60 cm	425–435 g	0,3
2	54–56 cm	325–335 g	0,3
1,5	52–54 cm	320–330 g	0,3
1	50–52 cm	290–300 g	0,3
0	46–49 cm	225–235 g	0,4
0.0	44–46 cm	180–200 g	0,4

STORM PRO HANDBALL

- IHF approved professional quality match and training ball
- Microfiber PU with chevron print
- Air-touch foam
- Extra softness
- Latex bladder with Air-trap valve
- Suitable for resin
- Hybrid construction, gives smoothness and fastness
- Feels lighter/easier to play with
- 2 years guarantee on glue and shape

091845 : 2 3



7754
NEON BLUE/
NEON GREEN



STORM HANDBALL

- High performance match and training ball
- PU with chevron print
- Air-touch foam
- Extra softness
- Latex bladder with Air-trap valve
- Suitable for resin
- Hybrid construction, gives smoothness and fastness
- Feels lighter/easier to play with
- 2 years guarantee on glue and shape

091852 : 2 3



8730
OMBRE BLUE/
NASTURTIUM



CONCEPT PLUS HANDBALL

- IHF approved professional quality match and training ball
- Microfibre PU with CHEVRON surface
- Air-touch foam
- Latex bladder with Air-trap valve
- Suitable for resin
- 2 years guarantee on stitchings and shape

091787 : 2 3



9210
WHITE/
RED/BLACK



CONCEPT HANDBALL

- Professional quality match and training ball
- Microfibre PU with CHEVRON surface
- Air-touch foam
- Latex bladder with Air-trap valve
- Suitable for resin
- 2 years guarantee on stitchings and shape

091788 : 2 3



7754
NEON BLUE/
NEON GREEN

8675
NASTURTIUM/
OMBRE BLUE/
WHITE



ELITE HANDBALL

- High performance match and training ball
- PU with CHEVRON surface
- Air-touch foam

- Latex bladder with Air-trap valve
- Suitable for resin
- 2 years guarantee on stitchings and shape

091789 : 1,5 2 3



8741
OMBRE BLUE/
NASTURTIUM/YELLOW



PREMIER HANDBALL

- Match and training ball
- PU with CHEVRON surface
- Soft foam

- Latex bladder with Air-trap valve
- Suitable for resin
- 2 years guarantee on stitchings and shape

091790 : 1 2 3



8676
OMBRE BLUE/
YELLOW/GREEN



ARENA HANDBALL

- Training ball
- PU with CHEVRON surface
- Soft foam

- Latex bladder with Air-trap valve
- NOT suitable for resin

091791 : 2 3



3683
NASTURTIUM/
VIRIDIAN/YELLOW



KIDS HANDBALL

- High quality kids handball
- PU with CHEVRON surface
- Air-touch foam

- Latex blater with Air-trap valve
- NOT suitable for resin
- 2 years guarantee on stitchings and shape

091792 : 0,0 0 1



3682
BRIGHT ROSE/
PURPLE/YELLOW



8711
VIRIDIAN/
OMBRE BLUE/YELLOW



FOOT— BALLS

**A BROAD RANGE OF FOOTBALLS
FOR PROFESSIONALS AND
AMATEURS ALIKE.**

From professional, FIFA-approved match balls to futsal balls and balls for children, hummel offers a wide range of carefully developed footballs. Many feature special features like AirTouch technology for soft cushioning and AirTrap latex bladders for responsive, light and airtight balls. All balls are designed with durability in mind, whether they're professional, indoor or practice balls.

- ✦ **High-performance match, training and futsal balls**
- ✦ **FIFA-approved match balls**
- ✦ **AirTouch cushioning for softness**
- ✦ **AirTrap latex bladder for airtightness and lightness**

THERMO BONDED BALLS



BLADE PLUS

The premium thermo bonded ball

Approved by FIFA, this thermo bonded ball is the top-level bonded ball. With a coarse surface, it's an elite ball perfect for professional matches.



STORM

Match & Training ball with plenty of bounce

With its smooth surface and EVA foam, this ball has lots of bounce and energy which makes it suitable for high-level games.

HYBRID BALLS



STORM LIGHT

Speciality ball for children

This hybrid ball has a soft EVA foam for softness. Due to its lightness, it's perfect for children and youth players.



STORM ULTRA LIGHT

Ultra light ball for children

Even lighter than the Storm Light, the Storm Ultra-Light caters to beginners and young players who want to practice their ball skills.

HAND STITCHED BALLS



CONCEPT+

The top-level professional ball

The absolute top-level ball, which carries FIFA approval. With a microfiber surface for flexibility and control, this hand-sewn match ball is a favourite among pros.



PREMIER ULTRA LIGHT

The light match & training ball

Even lighter than the Premier Light, the low weight makes this ball well-suited to beginners practicing on all surfaces.



ELITE

High performance match & training ball

With its slightly stiffer surface, the Elite ball feels a bit lighter than Concept+. It is perfect for seniors and youth players in both training and matches.



ENERGIZER

Leisure play & game ball

With a durable and soft material, the Energizer is designed for playful games and leisure at school, at home and indoors.



PREMIER

A durable ball for junior players

Especially popular among high-level junior players, this durable ball can be used on both grass and artificial turfs.



FUTSAL

The speciality futsal ball

Created especially for the indoor sport futsal, this heavy ball is also the perfect trick ball. Can be used indoors or on outdoor futsal fields.



PREMIER LIGHT

A light ball for juniors and children

This light speciality ball makes it easier for children and junior players to practice their skills on grass, artificial turf and indoors.

INNER BLADDER

Inner rubber bladder giving vivacity and bounce to the ball and explosivity to your game.

MOLDABLE FOAM

Foam layer with a moldable effect making it either soft or hard depending on the type of ball best suited for your game plan.



WHITE LINING

White lining consisting of cotton and polyester pads glued on top of the rubber bladder to give stability and make the ball perfectly round.

RESISTANT PU SURFACE

Finished off with a resistant PU surface, the hummel football is ready for play in any type of weather and feels absolutely perfect in the hands of any goalkeeper.

FOOTBALL INFLATION GUIDE

PREPARATION

During wintertime we suggest to store the footballs at room temperature (20 – 25°C) for minimum 24 hours before the first inflation in order to secure optimal softness and shape.

Unfold the football with both hands and shake the bladder free.

VALVE OIL

Drip 1 – 2 drops of hummel valve oil into the valve. It is important that valve-oil is used at every inflation as it makes the valve seal properly.

INFLATE

Position the valve upwards and insert the inflation needle straight into the valve.
Always use a long pump needle to ensure the needle does not damage the valve or the bladder.

CHECK PRESSURE

- Inflate the ball to the recommended pressure.
- Recommended pressure is printed on the ball near the valve.
- Inflate slowly to allow the ball to gain its correct shape. Rapid inflation can damage the bladder.
- Use a pressure gauge to check the pressure of the ball.

FOOTBALL MAINTENANCE GUIDE

BEFORE EACH INFLATION

Always drip 1 – 2 drops of hummel valve oil into the valve before inflation to ensure that it seals properly.

STORAGE

Store the ball at reduced pressure in a dry ventilated room at 20 – 25°C.

CLEANING AND DRYING

After use clean the football in mild soapy water and rinse with water. Then wipe the ball off with a towel and let it fully dry in a dry, airy place at 20 – 25°C.

Never dry the ball on or near a heating device.

WEIGHT AND CIRCUMFERENCE OF FOOTBALLS

FOOTBALL	SIZE	CIRCUMFERENCE	WEIGHT	RECOMMENDED PRESSURE (BAR)
BLADE	5	68,5 – 69,5 cm	420 – 445 g	0,8 – 1,0
STORM	5	68 – 70 cm	410 – 450 g	0,8 – 1,0
	4	63,5 – 66 cm	350 – 390 g	0,8 – 1,0
STORM LIGHT	5	68 – 70 cm	340 – 360 g	0,6
	4	63,5 – 66 cm	315 – 335 g	0,6
STORM ULTRA LIGHT	5	68 – 70 cm	285 – 320 g	0,6
	4	63,5 – 66 cm	285 – 310 g	0,6
	3	62 – 63,5 cm	280 – 300 g	0,6
CONCEPT+	5	68,5 – 69,5 cm	420 – 445 g	0,8 – 1,0
	4	63,5 – 66 cm	350 – 390 g	0,8 – 1,0
ELITE & PREMIER	5	68 – 70 cm	410 – 450 g	0,7 – 0,8
	4	63,5 – 66 cm	350 – 390 g	0,7 – 0,8
PREMIER LIGHT	5	68 – 70 cm	340 – 360 g	0,6
	4	63,5 – 66 cm	315 – 335 g	0,6
PREMIER ULTRA LIGHT	5	68 – 70 cm	285 – 320 g	0,6
	4	63,5 – 66 cm	285 – 310 g	0,6
	3	62 – 63,5 cm	280 – 300 g	0,6
ENERGIZER	5	68 – 70 cm	410 – 450 g	0,6
	4	63,5 – 66 cm	350 – 390 g	0,6
FUTSAL	4	62 – 64 cm	400 – 440 g	0,6

BLADE PLUS FOOTBALL

- FIFA approved professional quality match football
- Textured PU
- Air-Touch foam
- Air-Trap bladder
- Thermally bonded panels
- Minimal water uptake
- Suitable for grass and artificial pitch



091834 : 5



9808
WHITE/
VINTAGE INDIGO/PINK

STORM FOOTBALL

- Match and training football
- Shiny PU
- EVA foam
- Air-Trap bladder
- Thermally bonded panels
- Durable
- Minimal water uptake
- Suitable for grass and artificial pitch



091833 : 4 5



9810
WHITE/
VINTAGE INDIGO/RED

STORM LIGHT FOOTBALL

- Specially developed for young players to finely tune their football skills
- Official size - but lighter
- Shiny PU
- Soft EVA foam
- Air-Trap bladder
- Durable
- Minimal water uptake
- Suitable for grass, artificial and indoor pitches



091835 : 4 5



9811
WHITE/VINTAGE
INDIGO/ORANGE

STORM ULTRA LIGHT FOOTBALL

- Specially developed for kids to finely tune their football skills
- Official size - but lighter
- Shiny PU
- Soft EVA foam
- Air-Trap bladder
- Durable
- Minimal water uptake
- Suitable for grass, artificial and indoor pitches



091836 : 3 4 5



9812
WHITE/VINTAGE
INDIGO/YELLOW

CONCEPT PLUS FOOTBALL

- FIFA approved professional quality match football with unique playing properties
- Microfibre PU with high flexibility and firmness for optimal control under all conditions
- Air-Trap bladder which allows the ball to retain air for longer
- Specially developed lining which gives optimal appearance and bounce
- Hand-stitched
- Durable
- Suitable for grass and artificial pitch
- Warranty: 2 year stitch and shape guarantee
- * only size 5 is FIFA approved

091825 : 4 5



9808
WHITE/VINTAGE
INDIGO/PINK



ELITE FOOTBALL

- High performance match and training football
- PU with soft surface for good control under all conditions
- Air-Trap bladder which allows the ball to retain air for longer
- Specially developed lining which gives optimal appearance and bounce
- Hand-stitched
- Durable
- Suitable for grass and artificial pitch
- Warranty: 2 year stitch and shape guarantee

091826 : 4 5



9809
WHITE/VINTAGE
INDIGO/PURPLE



PREMIER FOOTBALL

- Match and training football
- Shiny PU
- Air-Trap bladder which allows the ball to retain air for longer
- Specially developed lining which gives optimal appearance and bounce
- Hand-stitched
- Durable
- Suitable for grass and artificial pitch
- Warranty: 2 year stitch and shape guarantee

091827 : 4 5



9810
WHITE/VINTAGE
INDIGO/RED



PREMIER LIGHT FOOTBALL

- Specially developed for young players to finely tune their football skills
- Official size - but lighter
- Shiny PU
- Air-Trap bladder which allows the ball to retain air for longer
- Specially developed lining which gives optimal appearance and bounce
- Hand-stitched
- Durable
- Suitable for grass, artificial and indoor pitches
- Warranty: 2 year stitch and shape guarantee

091828 : 4 5



9811
WHITE/VINTAGE
INDIGO/ORANGE



PREMIER ULTRA LIGHT FOOTBALL

- Specially developed for kids to finely tune their football skills
- Official size - but lighter
- Shiny PU
- Air-Trap bladder which allows the ball to retain air for longer
- Specially developed lining which gives optimal appearance and bounce
- Hand-stitched
- Durable
- Suitable for grass, artificial and indoor pitches
- Warranty: 2 year stitch and shape guarantee

091829 : 3 4 5



9814
WHITE/VINTAGE
INDIGO/TURQUOISE



ENERGIZER FOOTBALL

- Machine-stitched football for play and games
- Suitable for all conditions

091830 : 4 5



9813
WHITE/VINTAGE
INDIGO/GREEN



FUTSAL

- PU
- Hand-stitched
- Durable
- Special Futsal Butyle bladder
- Moderate bounce for optimal Futsal playing properties
- Suitable for indoor and outdoor Futsal pitches
- Warranty: 2 year stitch and shape guarantee

091831 : 4



9814
WHITE/VINTAGE
INDIGO/TURQUOISE







FOOTWEAR

THE DIVERSE FOOTWEAR RANGE COVERS BOTH INDOOR SHOES, FOOT- BALL BOOTS AND STYLISH SNEAKERS

From professional, top-level handball shoes to stylish sneakers, hummel shoes provide comfort and are designed to last. The Aerocharge series of indoor shoes are an elite range with styles for professionals and amateurs alike. With EVA cushioning, TPU counter, pivot zones and colourful design details, indoor shoes create stability, comfort, support, traction and durability in a game. The classic football boots carry a strong legacy, while the sport style collection is geared towards current lifestyle trends with Terraflly, Crosslite, Agilis and Liga sneaker designs being among the favourites.

- ✦ **Durable and functional performance shoes**
- ✦ **From top-level professional handball shoes to sneakers**
- ✦ **Sport style shoes for an everyday active lifestyle**

AEROCHARGE HANDBALL 220 TROPHY

- PU/Mesh/CPU/TPU.
- High Performance Handball Indoor shoe.
- CPU upper Flex Shield combined with breathable mesh
- POWER PLATE: Newly invented by hummel, ensuring explosive take off when running and jumping
- Innovative AEROFIT technology for ultimate comfort and support to the foot
- Enhanced comfort insole - Newly invented ergonomic insole by hummel
- Lightweight high performance outsole.
- Solid stabilizer for rigid support to the center of the foot
- PIVOT PRO for enhanced balance and grip
- Shock Point EVO heel absorption.
- Stabilizer PRO ensuring extra balance and support at forefoot area
- Twin Heel Control (T.H.Control) for enhanced balance and support at heel area
- UK size 3,5 - 15

060242 : 3,5 - 15



6765
CERAMIC



AEROCHARGE HANDBALL 200 TROPHY

- PU/Mesh/TPU
- High Performance Handball Indoor shoe
- TPU/PU hotmelt upper combined with breathable mesh
- POWER PLATE: Newly invented by hummel, ensuring explosive take off when running and jumping
- Innovative AEROFIT technology for ultimate comfort and support to the foot
- Enhanced comfort insole - Newly invented ergonomic insole by hummel
- Lightweight high performance outsole.
- Solid stabilizer for rigid support to the center of the foot
- PIVOT PRO for enhanced balance and grip
- Shock Point EVO heel absorption.
- Stabilizer PRO ensuring extra balance and support at forefoot area
- Twin Heel Control (T.H.Control) for enhanced balance and support at heel area
- UK size 3,5 - 15

060278 : 3,5 - 15



6765
CERAMIC



AEROCHARGE HANDBALL 180 TROPHY

- PU/Mesh/LYCRA
- High Performance Handball Indoor shoe
- PU hotmelt upper combined with breathable mesh
- Innovative AEROFIT technology for ultimate comfort and support at the forefoot
- POWER PLATE: Newly invented by hummel, ensuring explosive take off when running and jumping
- Lightweight high performance outsole
- Solid stabilizer for rigid support to the center of the foot
- PIVOT PRO for enhanced balance and grip
- Shock Point EVO heel absorption
- Stabilizer PRO ensuring extra balance and support at forefoot area
- Twin Heel Control (T.H.Control) for enhanced balance and support at heel area
- UK size 3,5 - 15

060292 : 3,5 - 15



6765
CERAMIC



AEROCHARGE HANDBALL 180 WS TROPHY

- PU/Mesh/LYCRA
- High Performance Handball Indoor shoe
- PU hotmelt upper combined with breathable mesh
- Innovative AEROFIT technology for ultimate comfort and support at the forefoot
- POWER PLATE: Newly invented by hummel, ensuring explosive take off when running and jumping
- Lightweight high performance outsole
- Solid stabilizer for rigid support to the center of the foot
- PIVOT PRO for enhanced balance and grip
- Shock Point EVO heel absorption
- Stabilizer PRO ensuring extra balance and support at forefoot area
- Twin Heel Control (T.H.Control) for enhanced balance and support at heel area
- Womens fit
- UK size 3,5 - 8

060507 : 3,5 - 8



6765
CERAMIC



AEROCHARGE HANDBALL 180 JR TROPHY

- PU/Mesh/LYCRA
- High Performance Kids Handball Indoor shoe
- PU hotmelt upper combined with breathable mesh
- Innovative AEROFIT technology for ultimate comfort and support at the forefoot
- Lightweight high performance outsole
- Solid stabilizer for rigid support to the center of the foot
- PIVOT PRO for enhanced balance and grip
- Shock Point EVO heel absorption
- Stabilizer PRO ensuring extra balance and support at forefoot area
- Twin Heel Control (T.H.Control) for enhanced balance and support at heel area
- EUR size 28-38

160324 : 28 - 38



6765
CERAMIC



ROOT PLAY ADULT TROPHY

- PU/MESH
- Multisport & allround shoe
- Medial and lateral forefoot support
- AEROTECH midsole cushioning
- Lightweight high performance outsole ensuring

- bounce and shock absorption
- Lightweight and flexible upper combined with strong PU for outdoor use
- UK SIZE 3,5 - 15

060325 : 3,5 - 15



6765
CERAMIC



ROOT JR LACE TROPHY

- PU/MESH
- STABILITY ZONE: Located in the forefoot area
- Internal injection moulded TPU heel counter for additional stability and support
- Additional eyelets at the top of the eyestay for optimal

- for lacing flexibility to optimise fit
- Brand new updated fresh colour ways perfect for team sport
- EUR sizes 26-38

160352 : 26 - 38



6765
CERAMIC



ROOT JR VELCRO TROPHY

- PU/MESH
- STABILITY ZONE: Located in the forefoot area
- Internal injection moulded TPU heel counter for additional stability and support
- Additional velcro straps for optimal for flexibility to

- optimise fit
- Brand new updated fresh colour ways perfect for team sport
- EUR sizes 26-38

200543 : 26 - 38



6765
CERAMIC



ROOT PLAY ADULT

- PU/MESH
- Multisport & allround shoe
- Medial and lateral forefoot support
- AEROTECH midsole cushioning
- Lightweight high performance outsole ensuring

- bounce and shock absorption
- Lightweight and flexible upper combined with strong PU for outdoor use
- UK SIZE 3,5 - 15

201531 : 3,5 - 15



8744
SARGASSO SEA



HUMMEL CELESTIAL X5

- PU / mesh material
- Indoor sport shoe
- Shock proof sockliner to obtain inlay absorption

- Lightweight flexible outsole - 4D energy system
- Lightweight, flexible and breathable mesh and PU
- UK sizes 3,5 - 15

060158 : 3,5 - 15



2001
BLACK



HUMMEL ROOT PLAY

- PU/textile material
- Multisport Performance Indoor sport shoe
- Medial and lateral forefoot support
- EVA cushioning

- Lightweight high performance outsole ensuring bounce and shock absorption
- Lightweight, flexible and breathable upper
- UK sizes 3,5 - 15

060167 : 3,5 - 15



2001
BLACK



HUMMEL ROOT JR

- PU material
- STABILITY ZONE: Located on the upper in the forefoot area
- Internal injection moulded TPU heel counter for additional stability and support
- Additional eyelets at the top of the eyestay for lacing flexibility to optimise fit.

- Brand new updated fresh colour ways perfect for team sport
- EUR sizes 26 - 38

160168 : 26 - 38



2001
BLACK



HUMMEL ROOT JR VELCRO

- Mesh / PU material
- Multisport shoe for indoor use
- 3 adjustable velcro straps
- Stability zone

- Moulded TPU outsole for support
- Flexible rubber outsole
- EUR sizes 26 - 38

160169 : 26 - 38



2001
BLACK



TERRAFLY NP

- Neoprene/Suede/Mesh
- AeroTech EVA rubber midsole with TGR grip
- AeroFlex insole
- Speed lace technology
- Neoprene AeroFit sock
- EUR sizes 36 - 48

060521 : 36 - 48



1525
ASPHALT

2509
LUNARROCK

7364
TOTAL ECLIPSE



AGILIS EG

- Mesh
- AeroTech EVA outsole with TGR grip
- AeroFlex insole
- All-over engineered mesh
- TPU heel counter for stability
- EUR sizes 36 - 48

060469 : 36 - 48



1525
ASPHALT

2001
BLACK

9001
WHITE



ACTUS BREATHER

- Mesh/Lycra
- 3D moulded lycra details
- AeroFlex insole
- Aero Tech EVA outsole
- EUR sizes 36 - 48

060453 : 36 - 48



2001
BLACK

9001
WHITE



ACTUS WS

- Mesh/Knit/Lycra
- AeroFit sock construction
- AeroFlex insole
- AeroTech EVA outsole
- EUR sizes 36 - 48

060455 : 36 - 42



2001
BLACK



LIGA GK

- Suede/PU
- Full rubber outsole for ultimate grip and impact feel
- Enhanced comfort insole - Newly invented ergonomic insole by hummel
- Retro design
- EUR sizes 36 - 48

060089 : 36 - 48



3425
RIBBON RED

7666
PEACOCK

8604
HERITAGE BLUE



OLD SCHOOL STAR FG

- Microfibre leather/PU
- Old school classic football boot
- Round studs for optimal stability and grip
- EUR sizes 40 - 45

201087 : 36 - 48



2001
BLACK



CROSSLITE DOT4

- Mesh/Lycra/Microfibre
- AeroTech EVA outsole
- Mono mesh with hexagon cut-out details
- Reflective details on heel
- EUR sizes 36 - 48

060459 : 36 - 48



2001
BLACK

7364
TOTAL ECLIPSE

9001
WHITE



CROSSLITE

- Mesh
- AeroTech EVA outsole
- Moulded TPU heel counter
- All-over mesh upper
- EUR sizes 36 - 48

060460 : 36 - 48



2001
BLACK



CROSSLITE SNEAKER JR

- Mesh/PU
- Light weight outsole
- Velcro/elastic lace closure
- EUR sizes 26 - 38

164293 : 26 - 38



2042
BLACK/
BLACK



CROSSLITE SNEAKER INFANT

- Mesh/PU
- Light weight outsole
- Velcro/elastic lace closure
- EUR sizes 19 - 25

164294 : 19 - 25



2042
BLACK/
BLACK



JENSEN SANDAL

- Injection EVA
- Lightweight full blown EVA slipper
- Soft injected rubber for comfortable fit and feel
- Easy "slip on"
- Perfect for allround use
- Should not be kept in sun or +50 degrees Celsius
- EUR sizes 30 - 48

060451 : 30 - 48



2001 BLACK 3233 BRIGHT ROSE 7364 TOTAL ECLIPSE



LARSEN SLIPPER VELCRO

- Injection EVA
- One piece lightweight EVA foam midsole/outsole
- Water resistant
- Classic old school design
- Synthetic upper with soft touch lining for extra comfort
- Should not be kept in sun or +50 degrees Celsius
- EUR sizes 36 - 48

060406 : 36 - 48



2001 BLACK 7648 DRESS BLUE/WHITE



LARSEN SLIPPER

- Injection EVA
- One piece lightweight EVA foam midsole/outsole
- Water resistant
- Classic old school design
- Synthetic upper with soft touch lining for extra comfort
- Should not be kept in sun or +50 degrees Celsius
- EUR sizes 36 - 48

060405 : 36 - 48



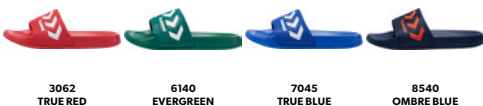
2001 BLACK 7648 DRESS BLUE/WHITE



LARSEN SLIPPER SMU

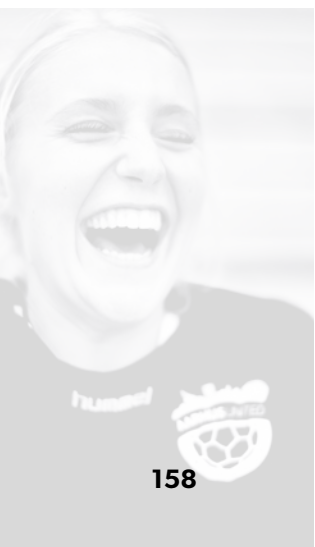
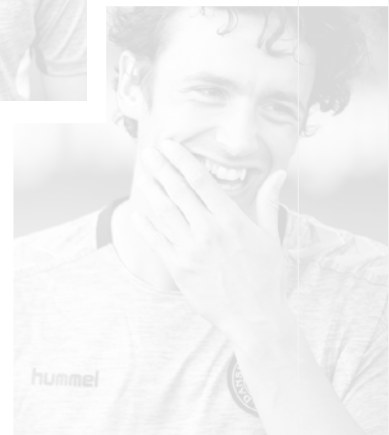
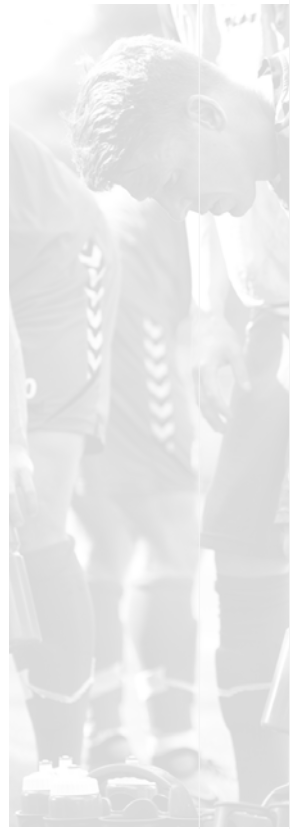
- Injection EVA
- One piece lightweight EVA foam midsole/outsole
- Water resistant
- Classic old school design
- Synthetic upper with soft touch lining for extra comfort
- Should not be kept in sun or +50 degrees Celsius
- EUR sizes 36 - 48

060437 : 36 - 48



3062 TRUE RED 6140 EVERGREEN 7045 TRUE BLUE 8540 OMBRE BLUE







SPONSOR— SHIPS 2018

Hummel is proud to sponsor a powerful, inspiring and unparalleled roster of teams, clubs, and players in countries all over the world. Together, they form #teammummel – and in different ways, they bring character, strong social values, and commitment to the game. To bring some of our key collections to life, we have visited six of the clubs we sponsor – and at hummel, we work hard to create even closer relationships with all partners in the years to come.



DBU train in the Tech Move collection

SPONSORSHIP



DBU

PROUD SPONSORS OF 15 DANISH NATIONAL TEAMS!

The hummel relationship with DBU – the Danish Football Association – goes back to 1979, when the first sponsorship agreement was signed. Not only does this mean that the Danish national teams are a big and important part of the hummel DNA, it also means the players wore red and white chevrons on the pitch back in 1992 in their shock win in the European Championships final against Germany. Since then, many iconic moments have made the collaboration between hummel and DBU even stronger – the Women's silver medal at the 2017 Women's Euro being the latest proud memory. As DBU was founded in 1889, it has deep roots in Denmark and Danish culture, which makes it one of the most perfect matches for a hummel sponsorship, in line with one of our biggest values: Danishness.



Charlton train in the Core collection

SPONSORSHIP



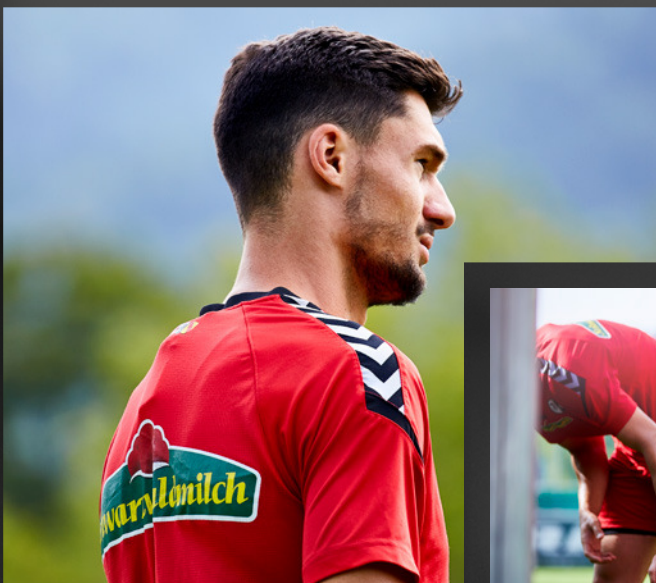
×



CHARLTON ATHLETIC

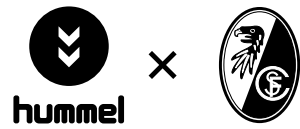
CELEBRATING AN IMPORTANT 25-YEAR-ANNIVERSARY IN HUMMEL KITS

The hummel and Charlton FC sponsorship deal was announced in 2017 – a landmark year for the important, proud London club, as the year also marked the 25th anniversary of the club's return to its iconic home: The Valley. This was marked by a unique hummel kit reflecting both The Valley, the fans and the players who were part of the team 25 years ago. This has helped firmly establish the collaboration between hummel and Charlton FC, and represents both an exciting opportunity and renewed focus in British football for hummel. As the United Kingdom has historically been one of hummel's strongholds with magnificent sponsorship deals, the close collaboration with Charlton FC is a reminder of not only a strong brand history, but also a promising future.



Freiburg train in the Authentic Charge collection

SPONSORSHIP



SC FREIBURG

**GERMAN UNDERDOGS WITH A
STRONG SENSE OF COMMUNITY
AND SELF**

hummel is proud to sponsor clubs and teams that do things differently and represent several of the hummel values of Sport, Character, Karma, Danishness, and Heritage – and one of them is SC Freiburg. The German club that has played in the German Bundesliga in 16 of the past 22 years, is known for its positive approach to talent, community building and its tight-knit relationship with its fan base. Their youth team has produced more licensed football players for the professional team than any other German pro-club and tellingly, their fanbase is equally as strong: with tolerance, respect for opponents and intense loyalty to the club, the fans are the backbone of SC Freiburg. It makes SC Freiburg a club with inherent Character – and an obvious partner for hummel.

Aarhus United train in the Authentic Charge collection



SPONSORSHIP

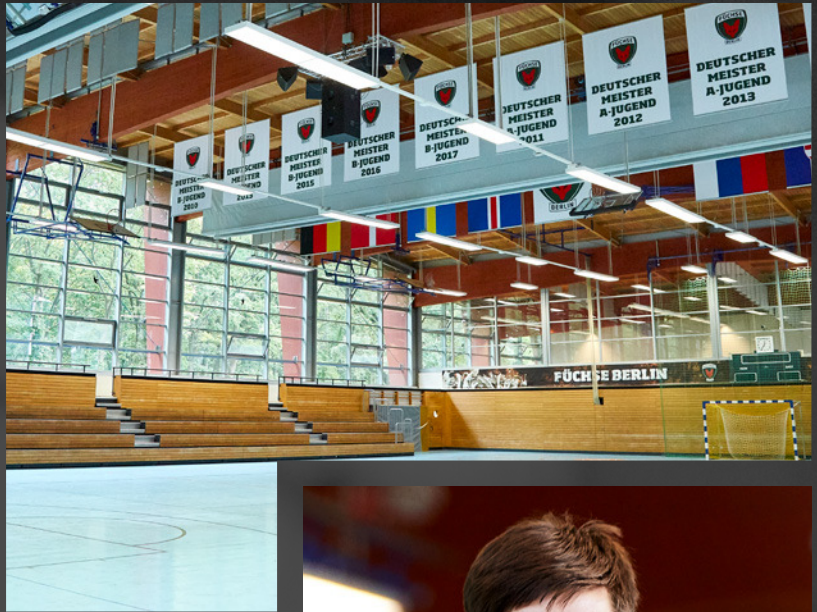


AARHUS UNITED

RETHINKING WOMEN'S HANDBALL WITH A STRONG COMMUNITY

In hummel's hometown of Aarhus, women's handball club Aarhus United is a brilliant example of how to reinvent sport, community and talent development. As a union of nine handball clubs in and around Aarhus, the club was formed in early 2017 and has already become a strong platform for developing the sport, securing Aarhus as a stronghold of women's handball, and creating a tight-knit community at the same time. Aarhus United has a stated mission to think and act differently from other clubs – and as such, they not only represent hummel's strong position in European handball, but are also an exciting example of how to co-think community, development, partnerships, and understanding of the youth.





Füchse Berlin train in the Core collection

SPONSORSHIP



FÜCHSE BERLIN—

**THE GERMAN HANDBALL CLUB
THAT HAS RISEN TO THE TOP**

Since they were founded in 1891, Füchse Berlin has been an integral part of handball in Berlin. Since 2014, they have won the DHB-Pokal, the EHF Cup and the IHF Super Globe, the latter twice in 2015 and 2016. hummel's sponsorship deal with Füchse Berlin further enhances its position as one of the world's leading handball and indoor brands. In a close-knit collaboration between hummel and the club, the jersey designs for Füchse Berlin reflect hummel's close relationship to Berlin and have details that show some of the city's landmarks. This highlights the close collaboration – a partnership that is further underlined by the fact that Füchse Berlin's star player Paul Drux has a personal hummel sponsorship and has been the face of the extremely popular professional Aerocharge handball shoe, which was released in 2017.

TEAM SPONSORSHIPS FOOTBALL



AaB — Denmark



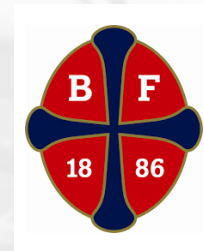
AB — Denmark



AC Horsens — Denmark



AGF — Denmark



BK Frem — Denmark



Brabrand IF — Denmark



Brøndby IF — Denmark



Brønshøj Boldklub — Denmark



Christiania Sports Club — Denmark



DBU — Danish national team



FC Fredericia — Denmark



Greve Fodbold — Denmark



IF Lyseng — Denmark



Jammerbugt FC — Denmark



Kalmar FF — Sweden



Odense Boldklub — Denmark



Odder IGF — Denmark



Odds BK — Norway



Ringkøbing Fodbold — Denmark



Sønderjyske — Denmark



Vejle Boldklub — Denmark



FF USV Jena — Germany



SV Ried — Austria



SC Freiburg — Germany



SpVgg Greuther Fürth — Germany



CD Lugo — Spain



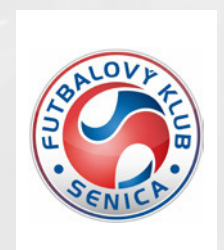
CD Tenerife — Spain



CE sant Gabriel — Spain



Charlton Athletic — England



FK Senica — Slovakia



FC Utrecht — Netherlands



FK Inter Bratislava — Slovakia



FK Radnicki — Serbia



FK Vardar — Macedonia



Florida Tropics — USA



Fukushima United — Japan



Fundación Albacete — Spain



Gainare Tottori — Japan



Gimnàstic de Tarragona — Spain



GKS Tychy — Poland



Go Ahead Eagles — Netherlands



Hartford City FC — USA



Helmond Sport — Netherlands



INAC Kobe Leonessa — Japan



Incheon United — South Korea



Jeonbuk Hyundai Motors — South Korea



Konyaspor — Turkey



Lane United FC — USA



LFF — Lithuanian national team



Nacional da Madeira — Portugal



AFF — Afghanistan Football Federation



PDX Football Club — USA



Qatar SC — Qatar



RC Strasbourg — France



Real Valladolid — Spain



Seagull CE — Spain



Norway Cup — Norway



Seoul City Amazones LFC — South Korea



Transportes Alcaine — Spain



UE St Julià — Andorra



Vitória FC — Portugal



V-Varen Nagasaki — Japan



Quilmes Atlético Club — Argentina

TEAM SPONSORSHIPS

HANDBALL



Aalborg Håndbold
— Denmark



Aarhus United — Denmark



Århus Håndbold
— Denmark



Eskilstuna GUIF — Sweden



IFK Kristianstad — Sweden



Lemvig-Thyborøn
— Denmark



Mors-Thy Håndbold
— Denmark



Ringkøbing Håndbold
— Denmark



SVG Celler — Germany



Sønderjyske — Denmark



Team Esbjerg — Denmark



TM Tønder Håndbold
— Denmark



TTH Holstebro — Denmark



Bayer Leverkusen
— Germany



Bregenz Handball
— Austria



DKB Handball-Bundesliga
— Germany



Füchse Berlin — Germany



GWD Minden — Germany



HC Erlangen — Germany



HSG Blomberg-Lippe
— Germany



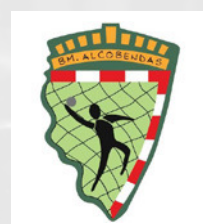
HSG Wetzlar — Germany



Al-Rayyan SC — Qatar



Al Sadd SC — Qatar



BM Alcobendas — Spain



BM Ciudad Encantada
— Spain



BM Granollers — Spain



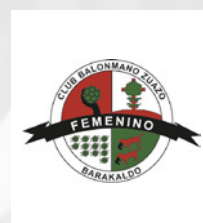
BM Guadalajara — Spain



BM Remudas — Spain



BM Villa de Aranda
— Spain



BM Zuazo — Spain



BSV Bern Handball
— Switzerland



Kadetten Schaffhausen
— Switzerland



LC Brühl Handball
— Switzerland



LK Zug Handball
— Switzerland



TV Endingen
— Switzerland



Brest HB — France

Chambéry Savoie Mont Blanc — France

Dunkerque Handball — France

Energa AZS Koszalin — Poland

Esperance Sportive De Tunis — Tunisia

HK FCC Město Lovosice — Czech Republic



Handball Federation of Montenegro



Handball Federation of Serbia



HC Vardar — Macedonia



KH Kopřivnice — Czech Republic



Saudi Arabia national handball team



Lekhwiya SC — Qatar



Lithuanian Handball Federation



Maccabi Srugo Rishon Lezion — Israel



MKS Lublin — Poland



HC Sporta Hlohovec — Slovakia



Nederlands Handbal Verbond — Dutch national team



Vive Tauron Kielce — Poland



RD Riko Ribnica — Slovenia



RK Maribor Branik — Slovenia



RK Trimo Trebnje — Slovenia



RK Zagreb — Croatia



Saint-Raphaël Var Handball — France



Siófok KC — Hungary



SK Sugar Gliders — South Korea



Svaz Národní Házeně — Czech Republic



ŠKP Bratislava — Slovakia



Tatra Litovel — Czech Republic



Handball Team Tatran Prešov — Slovakia



Telekom Veszprém — Hungary



Fenix Toulouse Handball — Toulouse



United Arab Emirates Handball Federation



WHC Vardar — Macedonia



ŽRK Budućnost — Montenegro



SK Hawks — South Korea



Handball Federation of Macedonia



Sandnes HK — Norway



Falk Horten — Norway



Nøtterøy Håndball — Norway



Oppsal Håndball — Norway



Sola HK — Norway



Handball Sport Verein Hamburg — Germany

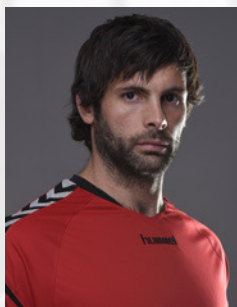
PERSONAL SPONSORSHIPS



Amine Bannour, TN
Chambéry Savoie
(Handball)



Anders Eggert, DK
Skjern Håndbold
(Handball)



Antonio García Robledo, ES
CSM București
(Handball)



Uroš Zorman, SI
Vive Targi Kielce
(Handball)



Blaž Janc, SI
Vive Targi Kielce
(Handball)



Borja Lancina, ES
Bidasoa-Irún
(Handball)



Cléopatre Darleux, FR
Brest HB
(Handball)



Cyril Dumoulin, FR
HBC Nantes
(Handball)



Daniel Narcisse, FR
PSG Handball
(Handball)



Eduarda Amorim, BR
Győri Audi ETO KC
(Handball)



Fabian Wiede, DE
Füchse Berlin
(Handball)



Ferran Solé, ES
Fenix Toulouse HB
(Handball)



Silvio Heinevetter, DE
Füchse Berlin
(Handball)



Henrik Møllgaard, DK
PSG Handball
(Handball)



Lékai Máté, HU
Telekom Veszprém
(Handball)



Ivan Nikcevic, RS
Sporting CP
(Handball)



Judith Sans, ES
BM Bera Bera
(Handball)



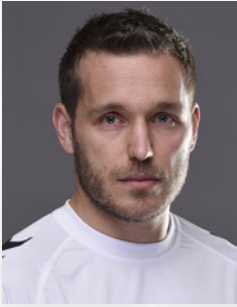
Marc Cañellas, ES
BM Granollers
(Handball)



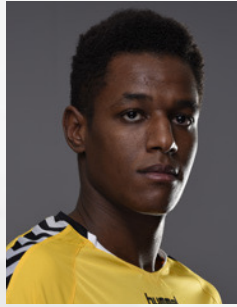
Kiril Lazarov, MK
HBC Nantes
(Handball)



Lars Walther, DK
FC Porto Handball
(Handball – coach)



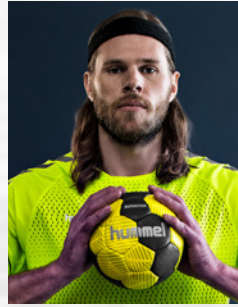
Víctor Tomás, ES
FC Barcelona Handbol
(Handball)



Wael Jallouz, ES
FC Barcelona Handbol
(Handball)



Silvia Navarro Jiménez, ES
BM Remudas
(Handball)



Mikkel Hansen, DK
PSG Handball
(Handball)



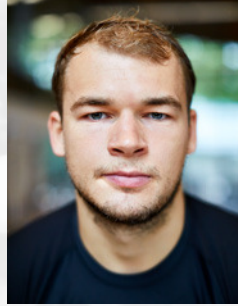
Mikler Roland, HU
Telekom Veszprém
(Handball)



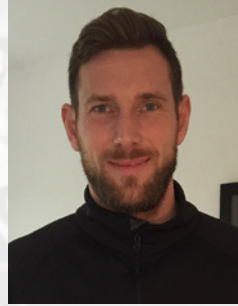
Mohamed Ali Bhar, TN
ES Tunis
(Handball)



Pablo Cacheda, ES
CB Ciudad de Logroño
(Handball)



Paul Druх, DE
Füchse Berlin
(Handball)



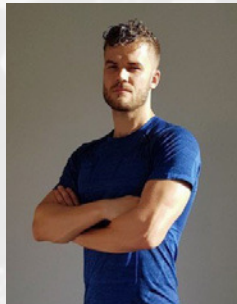
Jacob Bagersted, DK
SC Magdeburg
(Handball)



Lars Christiansen
(Handball)



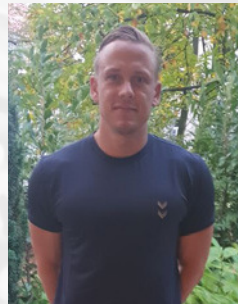
Henrik Toft Hansen, DK
SG Flensburg-Handewitt
(Handball)



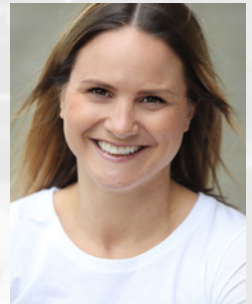
Alexander Lynggaard, DK
Saint Raphaël
(Handball)



Kasper Søndergaard, DK
Skjern Håndbold
(Handball)



Morten Olsen, DK
TSV Hannover-Burgdorf
(Handball)



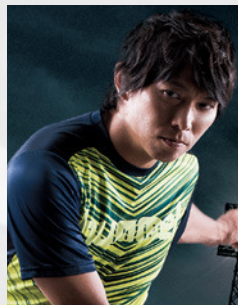
Anna Loerper, DE
TuS Metzinger
(Handball)



Mads Christiansen, DK
SC Magdeburg
(Handball)



Rene Toft Hansen, DK
THW Kiel
(Handball)



Hisato Sato, JP
Nagoya Grampus Eight
(Football)



Megumi Takase, JP
INAC Kobe Leonessa
(Football)



Ayu Nakada, JP
INAC Kobe Leonessa
(Football)



Yasutaro Matsuki, JP
Football commentator



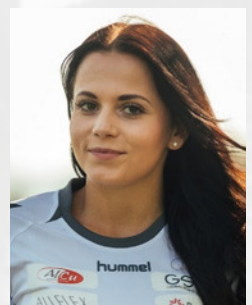
Toru Sato, JP
Shriker Osaka
(Futsal)



Kazuya Shimizu, JP
Fugador Sumida
(Futsal)



Sachiyo Yamada, JP
Victorian Women's Team
(Lacrosse)



Gloria Kotnik, SI
Snowboard

TEAM SPONSORSHIPS

OTHER



Zug United
— Floorball, Switzerland



Al Kharaiyat SC
— Futsal, Qatar



Al Sadd SC
— Futsal, Qatar



Al Wakrah SC
— Futsal, Qatar



Talavera
— Futsal, Spain



Qatar SC
— Futsal, Qatar



Ciudad de Guadalajara
— Futsal, Spain



KMF Ekonomac
— Futsal, Serbia



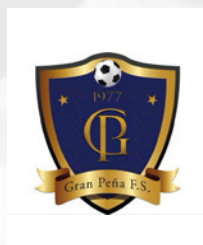
Nagoya Oceans
— Futsal, Japan



CD Basico Rivas
— Futsal, Spain



FC Valdepeñas
— Futsal, Spain



Tecnoy Gran Peña FS
— Futsal, Spain



Gipuzkoa Basket
— Basketball, Spain



CB Miraflores
— Basketball, Spain



Kyoto Hannaryz
— Basketball, Japan



Dongbu Promy
— Basketball, South Korea



GKS Tychy, — Basketball & Volleyball, Poland



Galatasaray, — Basketball & Volleyball, Turkey



KS Developres Rzeszów
— Volleyball, Poland



Netzhoppers KW-Bestensee
— Volleyball, Germany



OK Calcit Ljubljana
— Volleyball, Slovenia



Dafi Spolem Kielce
— Volleyball, Poland



Polski Cukier Muszynianka Muszyna
— Volleyball, Poland



Dresdner SC
— Volleyball, Germany



Esperance Sportive de Tunis
— Volleyball, Tunisia



Stichting Topvolleybal Dynamo
— Volleyball, Netherlands



FBŠ Hattrick Brno
— Floorball, Czech Republic



Lithuanian Boxing Federation



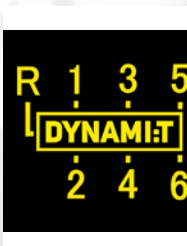
Lithuanian Wrestling Federation



Slovak Bodybuilding, Fitness and Powerlifting Association



Slovak Shooting Federation



Dynamit Racing Team
— Racing, Lithuania



Lithuania Canoeing Federation

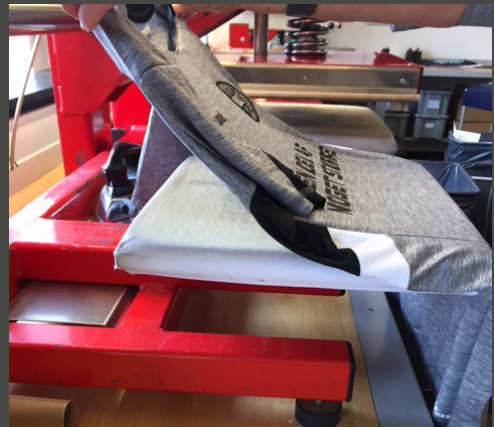
PRINT— GUIDE



- DO** take extra care with the print press
- DO** adjust the machine settings to the correct pressure per cm² and printing time
- DO** have the correct temperature settings as supplied in manual [max temperature 140°C]
- DO** use rubber pad for the garment's print area to lay on



- DO NOT** heat directly onto any existing print on the garment
- DO NOT** use either paper or Teflon sheet to protect existing print from the heat plate
- DO NOT** heat garment for any longer than 15 seconds



IMPORTANT!

Providing that these guidelines are followed correctly, you should have a perfectly printed garment with no damage done to the existing print.

hummel is not liable for any damage made to the existing print/logo, should it be reheated and/or if the instructions are not followed correctly. This can damage existing print or logo leading to peeling-off or cracking.



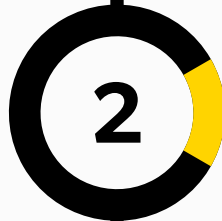
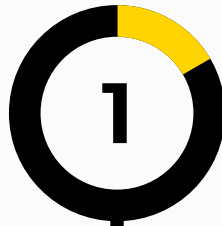
BEE—

SPOKE

With the hummel BeeSpoke programme, clubs can have unique kits and create their own vision of style. Clubs can choose from five jersey styles with either short or long sleeves, and a variety of special colours. With more than 4000 possible design variations and flexibility on quantity and lead time, hummel BeeSpoke highlights the individuality of every single club and caters to speciality needs and requirements. When you enter hummel BeeSpoke, six easy steps take you through the process:



**Create an account and login
to the BeeSpoke website**



**Click on the "create new
design" button or click on
one of the inspirational
jerseys already created**

**Choose a complete kit
or just shorts or jersey**



**Choose the preferred model
of jersey from five different
short- and long-sleeve designs**

**Choose design direction,
stripes and colours**



**Add order split and place order
– there's a minimum of 200 units**

For more information, please contact your local hummel distributor (hummel.net/contact)

INDEX

Style No.	Style name	Page	Style No.	Style name	Page
002431—102431	CORE COTTON POLO	68	021074	TECH INDOOR SOCK LOW	121
002435	AUTHENTIC CHARGE FUNCTIONAL POLO	48	021075	TECH INDOOR SOCK HIGH	121
003002	CLASSIC REFEREE SS JERSEY	75	021076	PERFORMANCE 2-PACK SOCK	122
003631—103631	HUMMEL SIRIUS SS JERSEY	38	021077	TECH PERFORMANCE SOCK	121
003632	HUMMEL SIRIUS SS JERSEY WOMEN	38	022030	3-PACK BASIC SOCK	120
003636—103636	CORE SS POLY JERSEY	64	022129	ANKLE SOCK SMU	120
003649	CORE WOMENS SS JERSEY	65	022137	FUNDAMENTAL FOOTBALL SOCK	123
003677—103677	AUTHENTIC CHARGE SS POLY JERSEY	46	022138	FUNDAMENTAL FOOTBALL SOCK FOOTLESS	123
003678	AUTHENTIC CHARGE SS POLY JERSEY WOMEN	47	022139	COMPRESSION SOCK	122
003679—103679	AUTHENTIC CHARGE SS TRAINING JERSEY	48	022140	FUNDAMENTAL 3-PACK SOCK	120
003709—103709	AUTHENTIC CHARGE COTTON SWEATSHIRT	50	025064	OLD SCHOOL SMALL TOWEL	126
003729—103729	HUMMEL FIRST PERFORMANCE SS JERSEY	84	025065	OLD SCHOOL BIG TOWEL	126
003737	HUMMEL FIRST PERFORMANCE SL JERSEY	84	031198—131198	CLASSIC GOALKEEPER PANT	75
003738	HUMMEL FIRST PERFORMANCE SS WOMEN'S JERSEY	86	032165—132165	CORE FOOTBALL PANT	67
003740—103740	HUMMEL FIRST COMFORT SS JERSEY	80	032173—132173	CORE POLY PANT	67
003741—103741	HUMMEL FIRST COMFORT WOMEN'S TANKTOP	82	032175—132175	CORE COTTON PANT	67
003742—103742	HUMMEL FIRST COMFORT SS WOMEN'S JERSEY	82	032181	CORE ALL-WEATHER PANT	69
003743	HUMMEL FIRST COMFORT WOMEN'S BRA	82	032182	CORE BENCH PANTS	69
003746	HUMMEL FIRST COMPRESSION SS TEE	79	033281—133281	HUMMEL SIRIUS HALF ZIP SWEAT	38
003747	REFLECTOR TECH JERSEY	14	033310—133310	CLASSIC BEE ZEN ZIP JACKET	92
003755—103755	CORE STRIPED SS JERSEY	65	033320	CLASSIC BEE WOMEN ZEN ZIP JACKET	100
003756—103756	CORE POLYESTER TEE	68	033390	CLASSIC BEE AAGE ZIP JACKET	94
004087—104087	ESSENTIAL GOALKEEPER JERSEY	74	033401—133401	AUTHENTIC CHARGE POLY ZIP JACKET	50
004325—104325	HUMMEL FIRST PERFORMANCE LS JERSEY	84	033403—133403	AUTHENTIC CHARGE POLY HOODIE	52
004326	HUMMEL FIRST PERFORMANCE LS WOMEN'S JERSEY	86	033406—133406	AUTHENTIC CHARGE TRAINING SWEAT	52
004327—104327	HUMMEL FIRST COMFORT LS JERSEY	80	033407—133407	AUTHENTIC CHARGE TURTLE NECK	53
004328—104328	HUMMEL FIRST COMFORT WOMEN'S LS JERSEY	83	033409	REFLECTOR TECH SWEAT	14
004329	HUMMEL FIRST COMPRESSION LS TEE	79	033415	AUTHENTIC CHARGE WOMEN POLY HOODIE	52
004615—104615	CORE LS POLY JERSEY	64	033416—133416	AUTHENTIC CHARGE ZIP HOODIE	52
004616—104616	AUTHENTIC CHARGE LS POLY JERSEY	46	033451—133451	CORE COTTON HOODIE	68
005002—105002	FUNDAMENTAL TRAINING BIB	125	033551—133551	AUTHENTIC CHARGE MICRO ZIP JACKET	50
008467—108467	CLASSIC BEE COTTON TEE	94	033552	AUTHENTIC CHARGE MICRO ZIP JACKET WOMEN	50
009533	SUE SEAMLESS SPORTS TOP	88	036866—136866	CLASSIC BEE PHI ZIP JACKET	94
009534	SUE SEAMLESS TOP	88	036868	CLASSIC BEE WOMEN PHI ZIP JACKET	104
009541—109541	CORE COTTON TEE	68	036893—136893	CORE POLY JACKET	66
010020	CLASSIC REFEREE SHORTS	75	036894—136894	CORE COTTON SWEAT	66
010760	CLASSIC BEE WOMENS TECH SHORTS	101	036895—136895	CORE 1/2 ZIP SWEAT	66
010797—110797	HUMMEL SIRIUS SHORTS	39	037110	CLASSIC BEE AAGE PANTS	95
010798	HUMMEL SIRIUS SHORTS WOMEN	39	037123—137123	HUMMEL SIRIUS FOOTBALL PANT	39
010810	CLASSIC BEE AAGE SHORTS	95	037127—137127	AUTHENTIC CHARGE SWEAT PANT	51
010815—110815	ESSENTIAL GOALKEEPER SHORTS	74	037130—137130	CLASSIC BEE ZEN PANTS	93
010816—110816	ESSENTIAL GOALKEEPER SHORTS WITH PADDING	74	037140	CLASSIC BEE WOMEN ZEN PANTS	101
011083—111083	CORE POLY SHORTS	64	037170—137170	CLASSIC BEE PHI PANTS	95
011086	CORE WOMENS SHORTS	65	037180	CLASSIC BEE WOMEN PHI PANTS	105
011153	FUNDAMENTAL WOMEN'S TIGHTS	86	037227—137227	AUTHENTIC CHARGE MICRO PANT	51
011276	SUE SEAMLESS TIGHTS	88	037228—137228	AUTHENTIC CHARGE POLY PANTS	51
011334—111334	AUTHENTIC CHARGE POLY SHORTS	46	037229—137229	AUTHENTIC CHARGE FOOTBALL PANTS	53
011335	AUTHENTIC CHARGE POLY SHORTS WOMEN	47	037231	AUTHENTIC CHARGE MICRO PANT WOMEN	51
011336	CLASSIC BEE CI SEAMLESS TIGHTS	103	037232—137232	AUTHENTIC CHARGE HYBRID FOOTBALL PANT	53
011342—111342	AUTHENTIC CHARGE 2IN1 SHORTS	49	037236	REFLECTOR TECH FOOTBALL PANT	15
011343	AUTHENTIC CHARGE 2IN1 SHORTS WOMEN	49	037614—137614	AUTHENTIC CHARGE 3/4 PANTS	48
011347—111347	HUMMEL FIRST PERFORMANCE SHORT TIGHTS	85	039720	CLASSIC BEE WOMENS TECH PANTS	101
011348	HUMMEL FIRST PERFORMANCE LONG TIGHTS	85	040918	HUMMEL BALL NET	131
011349	HUMMEL FIRST PERFORMANCE 3/4 TIGHTS	85	040957	AUTHENTIC SPORTS BAG	132
011355	HUMMEL FIRST PERFORMANCE HIPSTER	86	040965	AUTHENTIC TOILETRY BAG	133
011356	HUMMEL FIRST PERFORMANCE WOMEN'S L TIGHTS	87	040995	LUGO BIG WEEKEND BAG	133
011358—111358	HUMMEL FIRST COMFORT SHORT TIGHTS	81	040997	JET MEDIUM WEEKEND BAG	133
011359—111359	HUMMEL FIRST COMFORT LONG TIGHTS	81	040998	TOTE TOILETRY	133
011361	HUMMEL FIRST COMPRESSION SHORT TIGHTS	79	041441	LIGHT WEIGHT PLAYER GLOVES	124
011362	HUMMEL FIRST COMPRESSION LONG TIGHTS	79	041442	COLD WINTER PLAYER GLOVES	124
011363	REFLECTOR TECH SHORTS	14	060089	LIGA GK	155
011500	CLASSIC BEE LOGO LEGGINGS	105	060158	HUMMEL CELESTIAL X5	153
011503—111503	AUTHENTIC CHARGE TRAINING SHORTS	49	060167	HUMMEL ROOT PLAY	153
011837—111837	HUMMEL FIRST COMFORT WOMEN'S LONG TIGHTS	83	060242	AEROCHARGE HANDBALL 220 TROPHY	150
011838—111838	HUMMEL FIRST COMFORT WOMEN'S SHORT TIGHTS	83	060278	AEROCHARGE HANDBALL 200 TROPHY	150
019146	CLASSIC BEE NOAH POLO	98	060292	AEROCHARGE HANDBALL 180 TROPHY	150
019207	MEN'S RUNNER TEE	87	060325	ROOT PLAY ADULT TROPHY	152
019208	WOMEN'S RUNNER TEE	87	060405	LARSEN SLIPPER	157
019238	CLASSIC BEE CI SEAMLESS TOP	103	060406	LARSEN SLIPPER VELCRO	157
019239	CLASSIC BEE FAUNA SS TEE	100	060437	LARSEN SLIPPER SMU	157

Style No.	Style name	Page	Style No.	Style name	Page
060451	JENSEN SANDAL	157	200019—200020	TECH MOVE ZIP HOOD	26
060453	ACTUS BREATHER	154	200021—200022	TECH MOVE FOOTBALL PANTS	27
060455	ACTUS WS	155	200025—200026	TECH MOVE TRAINING SHORTS	27
060459	CROSSLITE DOT4	156	200027—200028	TECH MOVE ALL WEATHER JACKET	28
060460	CROSSLITE	156	200029	TECH MOVE BENCH JACKET	28
060469	AGILIS EG	154	200044	HMLHERI SHORTS	114
060507	AEROCHARGE HANDBALL 180 WS TROPHY	151	200058	HMLKITBAG	114
060521	TERRAFLY NP	154	200059	HMLGRAND ZIP JACKET	115
080822—180822	CORE SPRAY JACKET	69	200060	HMLGRAND PANTS	116
080904	CLASSIC BEE WOMEN FENG JACKET	109	200170	HMLCLIO ZIP JACKET	102
080905	CLASSIC BEE FENG JACKET	107	200171	HMLCLIO ZIP HOOD	102
080906	CLASSIC BEE WOMEN JOJO JACKET	108	200173	HMLCLIO PANTS	102
080907	CLASSIC BEE JOJO JACKET	106	200174	HMLGUY ZIP JACKET	96
080908	CLASSIC BEE WOMEN ZAIN JACKET	109	200175—200756	HMLGUY ZIP HOOD	96
080909	CLASSIC BEE ZAIN JACKET	107	200176	HMLGUY SWEATSHIRT	96
083036—183036	AUTHENTIC CHARGE WINDBREAKER	53	200177—200757	HMLGUY PANTS	97
083048—183048	AUTHENTIC CHARGE LIGHT WEIGHT WINDBREAKER	53	200178	HMLGUY SHORTS	97
083049—183049	AUTHENTIC CHARGE ALL-WEATHER JACKET	54	200180	HMLJET T-SHIRT S/S	99
083050—183050	AUTHENTIC CHARGE STADION JACKET	54	200181	HMLGLAY T-SHIRT L/S	99
083051—183051	AUTHENTIC CHARGE FUNCTIONAL JACKET	54	200182	HMLGLAY T-SHIRT S/S	99
083058	REFLECTOR TECH JACKET	15	200222	HMLRICCI PANTS	93
089061	TRAINING HAT	124	200227	HMLCHARM ZIP JACKET	92
089066	BASIC CAP	125	200230	HMLPIPER ZIP JACKET	104
089441	TRAINING BEANIE	124	200231	HMLPIPER PANTS	105
091787	CONCEPT PLUS HANDBALL	138	200303	HMLEDT TIGHTS	103
091788	CONCEPT HANDBALL	138	200434	HMLSOPHIA TIGHTS	104
091789	ELITE HANDBALL	139	200437	HMLPERLA T-SHIRT S/S	100
091790	PREMIER HANDBALL	139	200438	HMLLEISURELY HOODIE	100
091791	ARENA HANDBALL	139	200439	HMLLEISURELY PANTS	101
091792	KIDS HANDBALL	139	200440—200753	HMLCOMFORT HOODIE	92
091825	CONCEPT PLUS FOOTBALL	145	200441—200754	HMLCOMFORT PANTS	93
091826	ELITE FOOTBALL	145	200442—200755	HMLCOMFORT SHORTS	93
091827	PREMIER FOOTBALL	145	200443—200752	HMLBRICK T-SHIRT S/S	92
091828	PREMIER LIGHT FOOTBALL	145	200444	HMLFLINT T-SHIRT S/S	98
091829	PREMIER ULTRA LIGHT FOOTBALL	146	200445	HMLFLINT T-SHIRT L/S	98
091830	ENERGIZER FOOTBALL	146	200492	HMLBABBETTE JACKET	109
091831	FUTSAL	146	200493	HMLLESKE JACKET	107
091833	STORM FOOTBALL	144	200494	HMLDALIA JACKET	108
091834	BLADE PLUS FOOTBALL	144	200495	HMLASSER JACKET	106
091835	STORM LIGHT FOOTBALL	144	200512—200532	HMLADAM ZIP HOOD	106
091836	STORM ULTRA LIGHT FOOTBALL	144	200513	HMLEVA ZIP HOOD	108
091845	STORM PRO HANDBALL	138	200543	ROOT JR VELCRO TROPHY	152
091852	STORM HANDBALL	138	200626—200765	HMLNELLY ZIP JACKET	104
099000	BALL PUMP	127	200627—200769	HMLNATHAN ZIP JACKET	96
099014	OLD SCHOOL BIG WRISTBAND	126	200628—200768	HMLNELLY PANTS	105
099015	OLD SCHOOL SMALL WRISTBAND	126	200629—200770	HMLNATHAN PANTS	97
099164	OLD SCHOOL CAPTAINS BAND	125	200646—201000	TECH MOVE FUNCTIONAL LIGHT WEIGHT JACKET	28
099296	NATURAL RESIN	127	200910	AUTHENTIC CHARGE SPORTS BAG	130
099297	RESIN GEL	127	200911	AUTHENTIC CHARGE SOCCER BAG	130
099298	RESIN REMOVER	127	200912	AUTHENTIC CHARGE BACK PACK	131
099299	VALVE OIL	127	200913	AUTHENTIC CHARGE BALL BACK PACK	131
099302	NATURAL RESIN	127	200914	AUTHENTIC CHARGE TEAM SPORTS BAG	130
099303	RESIN GEL	127	200915	AUTHENTIC CHARGE BALL BAG	131
133926	KESS HOODIE NOOS	115	200917	AUTHENTIC CHARGE TROLLEY	130
137745	KESS PANTS NOOS	116	200918	AUTHENTIC CHARGE GYM BAG	132
160168	HUMMEL ROOT JR	153	200919	TECH MOVE SPORTS BAG	132
160169	HUMMEL ROOT JR VELCRO	153	200920	TECH MOVE BACK PACK	132
160324	AEROCHARGE HANDBALL 180 JR TROPHY	151	201087	OLD SCHOOL STAR FG	155
160352	ROOT JR LACE TROPHY	152	201160	PRO FOOTBALL SOCK	123
164293	CROSSLITE SNEAKER JR	156	201162	HMLKILLIAN ZIP JACKET	115
164294	CROSSLITE SNEAKER INFANT	156	201164	HMLBOYS T-SHIRT L/S	114
200004—200005	TECH MOVE JERSEY S/S	24	201165	HMLJAKI T-SHIRT S/S	114
200006	TECH MOVE JERSEY WOMEN S/S	25	201166	HMLTHIM SHORTS	116
200007—200048	TECH MOVE JERSEY L/S	24	201531	ROOT PLAY ADULT	152
200008—200009	TECH MOVE POLY SHORTS	24			
200010	TECH MOVE POLY SHORTS WOMEN	25			
200011—200012	TECH MOVE HALF ZIP SWEATSHIRT	26			
200013—200014	TECH MOVE POLY ZIP JACKET	26			
200015—200016	TECH MOVE POLY PANTS	27			
200017—200018	TECH MOVE POLY HOODIE	26			

FROM CRADLE TO CRADLE

A SUSTAINABLE SPORT CATALOGUE

This Sport Catalogue is a cradle-to-cradle certified product.

This means that you turn the pages of a guaranteed sustainably printed product, which is 100% biologically decomposable and completely free of any toxic chemicals and heavy metals. It also means that in producing this brochure, we have reused the earth's resources in a natural circular process, leaving no harmful waste materials, which are dangerous to people or the environment. In other words, you could bury this brochure in your garden and even plant vegetables on top without damaging the environment or your health!

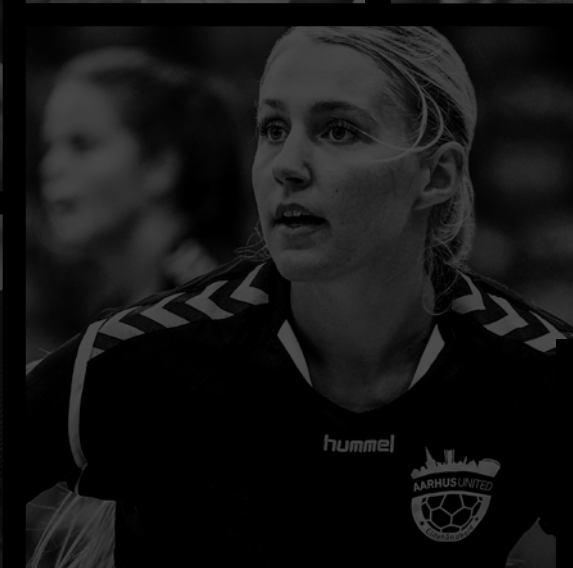
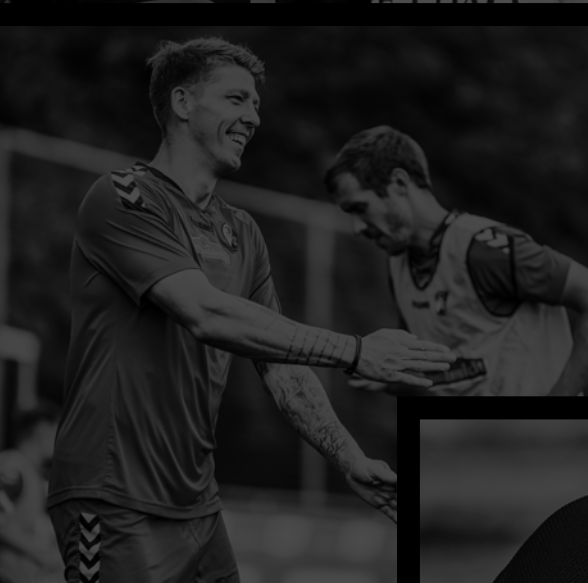
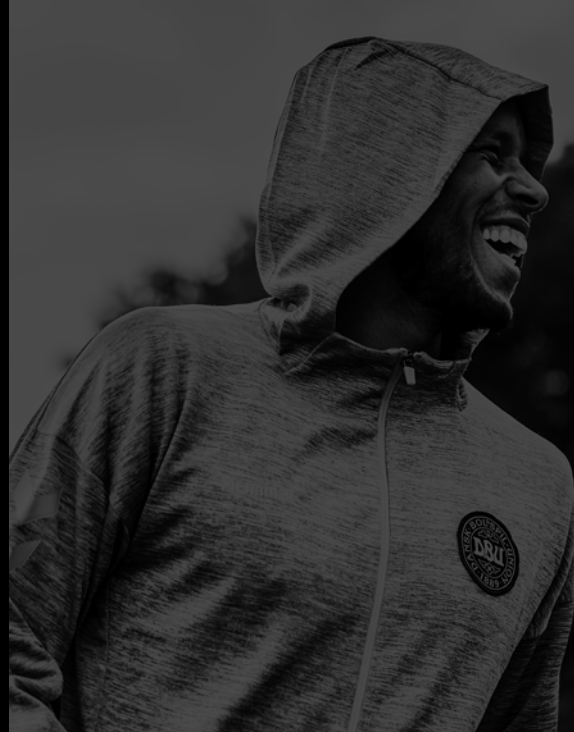
The Cradle-to-Cradle certification is a holistic environmental certification which guarantees that a product does not pollute or eat into the earth's limited resources but enters nature's own circuit. In line with our Company Karma philosophy, we encourage these new environmentally responsible and circular processes, securing a healthy world for future generations, from cradle to cradle.



PurePrint® by KLS

Produced 100% biodegradable
by KLS PurePrint A/S, binding excluded





SILVER

PurePrint® by KLS

Produced 100 % biodegradable
by KLS PurePrint A/S, binding excluded

SPORT18 - ENG TEXT, NO PRICES



5 700495 011905 >