

COMPACT UTILITY TRACTORS



JOHN DEERE

NOTHING RUNS LIKE A DEERE

CONTENTS

OUTSTANDING FEATURES

Discover the value a John Deere compact tractor can offer you through numerous innovations and intelligent features.



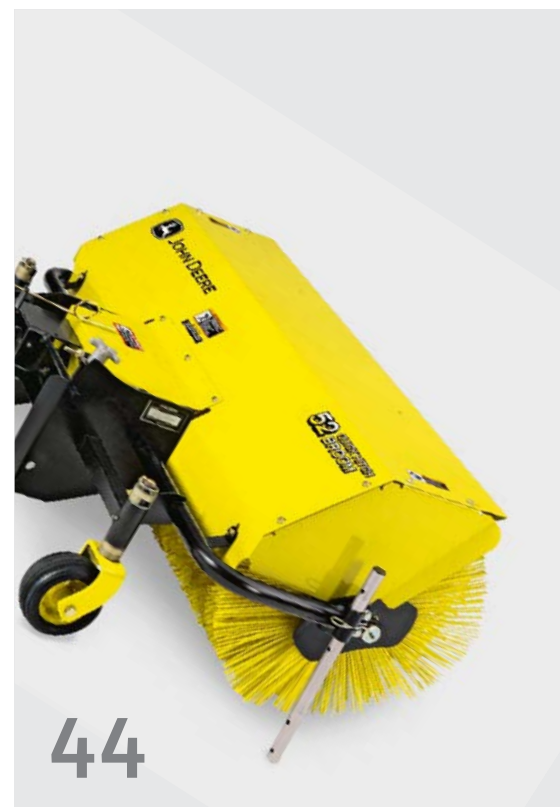
18



6

AUGUSTA ELEMENTS

Earth, air, water, fire ... you'll find all of these at the American John Deere factory in Grovetown, Georgia. But it's the fifth element that really makes the difference: the engineers and craftsmen who design and assemble our Compact Utility Tractors there for the entire world.



44

ATTACHMENTS

Hydraulics, towing and lift hitches, quick attach blade and brooms. Our attachments will make your John Deere even more versatile.



A QUESTION OF TRUST

When your business depends on your equipment, top quality products and service are a must. Just ask landscape gardener Jean-Michel Bertaux!

Work. Done well. 4–5
 Augusta elements 6–9
 A question of trust 10–11
 All-round support 12–15
 One tractor – one hundred jobs 16–17

OUTSTANDING FEATURES

Features 18–19
 Cab & ComfortGard Cab & control layout..... 20–21
 Front loader 22
 AutoConnect mowing decks 23
 Material collection systems..... 23

COMPACT UTILITY TRACTORS

1R Series 24–25
 2R Series 26–29
 3E Series 30–33
 3R Series 34–37
 4M Series 38–39
 4R Series 40–43

ATTACHMENTS 44–49

PRODUCT SPECIFICATIONS 50–55

24

COMPACT UTILITY TRACTORS





WORK DONE WELL.

Every day, you give the job your best. You think and plan. You sweat and ache. And you always go the extra mile to see things get done properly. Because anything less just wouldn't feel right.

That same attitude explains why you appreciate good tools, and look after them well. Like any good worker, you know from experience that 'quality in' and 'quality out' really do go hand-in-hand.

If that sounds like you, you're in good company with John Deere. We take as much pride in the quality of our machines as the people who rely on them all over the world. Professionals like yourself, who understand the meaning of work done well. ■



AUGUSTA ELEMENTS

Earth, air, water, fire ... you'll find all of these at the American John Deere factory in Grovetown, Georgia. But it's the fifth element that really makes the difference: the engineers and craftsmen who design and assemble our Compact Utility Tractors there for the entire world.

Using state-of-the-art technology, they fashion iron and steel, rubber and glass into machines of the highest possible standards. John Deere has a passion for quality engineering, and it shows. In every nut, bolt, and weld of our Compact Utility Tractors and on the faces of the people who are proud to build them.

MADE FOR EUROPE

We never compromise. That's why every premium tractor that leaves Augusta for the Old World is European from the ground up. From metric nuts and bolts to emission standards and safety warnings, each machine is all set up and ready to go.

BUILT FOR EUROPE

In Augusta, we factory-fit every tractor with the right technology for the region it's destined for. So when you buy a Series 1, 2, 3 or 4 model in Europe, you can be sure it has everything you need to operate smoothly and safely from the very start. From mirrors and lights to emission standards and safety warnings, our people in Augusta pull out all the stops to make sure you enjoy the best of both worlds: USA build quality, plus European specifications.



***“WE NEVER ASSUME
SOMETHING WILL BE ALL
RIGHT – WE MAKE DARN
SURE IT IS.”***

DAVID KING
MANUFACTURING ENGINEER



John Deere Augusta began building Series 1, 2, 3 and 4 Compact Utility Tractors in 1990. The facility currently produces 27 different models that are distributed throughout North America and globally to over 40 different countries. It occupies more than 37,000 square metres and employs approximately 470 employees.



“THE PEOPLE HERE REALLY WANT TO DO A GOOD JOB. THEY TAKE FEEDBACK WELL, AND THEY KEEP US REALLY BUSY WITH SUGGESTIONS FOR MAKING THINGS BETTER STILL.”

DAVID KING
MANUFACTURING ENGINEER



A transmission is being mounted onto the high-strength steel frame of a Compact Tractor by two Augusta factory workers.



INTERVIEWS



David King is a **Manufacturing Engineer** who plans and oversees the production lines for 3 and 4 Series premium compact tractors. Every day, he looks for ways to add even more quality through the tools, processes and quality control checks he specifies. "I'm proud that we can build such great products in the USA, despite the higher labour costs that involves."



Steve Sanner is a **Field Test Supervisor** who has been with the company for 20 years. Three years before a new tractor is launched, Steve starts testing prototypes to catch any flaws or weaknesses well ahead of production. "My colleagues get paid to make them, I get paid to break them", he smiles. "Then when I do, we all dig in together to solve the issue and get it right." ■

The Augusta factory builds Compact Utility Tractors from start to finish for the whole world.



***"PEOPLE IN EUROPE
WORK OUR MACHINES
MUCH LONGER AND
HARDER THAN OUR
CUSTOMERS IN THE USA.
SO IF WE CAN SATISFY
EUROPE, WE CAN
SATISFY ANYBODY!"***

STEVE SANNER
FIELD TEST SUPERVISOR

A QUESTION OF TRUST

Landscape gardener Jean-Michel Bertaux bought his first John Deere in 1993. Today he runs no fewer than thirteen – all supplied and serviced by the same dealer who sold him his first one, all those years ago.

As a professional 'createur des jardins', Mr. Bertaux can see a beautiful garden where others see only bare earth. Yet despite his artistic streak, he has no time for sentimentality when it comes to his equipment. With a busy schedule and a wide range of challenges to meet, he and his 33-strong team demand tough machines that can run all year with nothing more than regular maintenance.

At the John Deere dealership in 1993, Mr. Bertaux found all this and more besides. In owner Jean-Marc Bransard, he met a man after his own heart: a pragmatic expert with a passion for good service. Monsieur Bertaux began with a 455 Series ride on mower, the great-grandfather of today's X900 Series. It provided years of faithful service – and paved the way for a John Deere fleet that now includes no fewer than four compact tractors.



Jean-Michel Bertaux and his wife Martine outside the church in their picturesque home village of Saint-Denis-de-Palin.





Business is always personal, as the saying goes. This is particularly true in France, where sharing a meal and making a deal often go hand-in-hand.

Ever since, Monsieur Bertaux has trusted John Deere to help him create and maintain a vast range of private gardens from his headquarters in Saint-Denis-de-Palin. From tireless compact tractors to precision front mowers and an autonomous Tango, their machines run from dawn to dusk and beyond. And thanks to the expert support of Monsieur Bransard, they will continue to do so for years to come.

Like many owners, Monsieur Bertaux appreciates the quality of his John Deere machines – and his John Deere dealer – more with every year that passes. “You come for the machines”, he says with a smile. “But you stay for the service.” ■



The front of Monsieur Bertaux' compact utility tractor, with the classic John Deere logo from 1968.



**“YOU COME FOR
THE MACHINES, BUT YOU
STAY FOR THE SERVICE.”**

MONSIEUR BERTAUX,
“CREATEUR DES JARDINS”

Mr. Bertaux started out with 1 truck and a good idea – and now runs 13 John Deeres.

ALL-ROUND SUPPORT

From advice and sales to maintenance and repairs, your local John Deere partner has everything you need to keep your investment running like clockwork. Find your nearest John Deere dealer today at dealerlocator.deere.com





A GLOBAL COMMUNITY

The people at your local John Deere dealership are always there for you – with personal service you can rely on. As part of the John Deere community, they combine their own individual style with all the benefits of a strong global company.



TAILOR-MADE FINANCING

John Deere Financial has been helping customers grow their businesses for more than 150 years. Based on our unique understanding of your market and the challenges you face, we offer competitive, tailor-made financing for the machines you need to raise your game.

From hire purchase to leasing and rentals, your local John Deere dealer can help you choose the options that suit your business best. Why not drop in for a chat?



PowerGard

RELAX – YOU'RE COVERED

With a PowerGard maintenance and protection plan, you can rest assured that your machines will always be in peak condition and raring to go.



Maximum uptime,
minimum worries ...
PowerGard leaves you
free to focus on your
business while we look
after your machines.

POWERGARD PACKAGES

POWERGARD MAINTENANCE

POWERGARD MAINTENANCE

POWERGARD PROTECTION

POWERGARD MAINTENANCE

POWERGARD PROTECTION

POWERGARD PROTECTION PLUS



FACTS, NOT GUESSWORK

Ever wished you could X-ray your machine to see how it's doing inside? Expert Check is the next best thing: a thorough diagnosis of all key components (including sensors, electronics and software) using up-to-the-minute, field-based checklists and tools that are exclusive to John Deere dealers. The result is a detailed report stating exactly where your machine stands, as well as what needs doing and when.

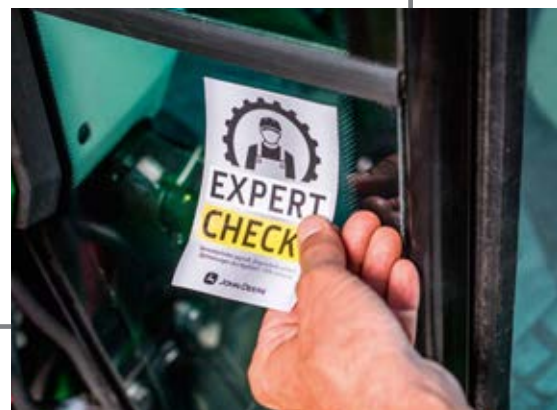
CLEAR PRICES

Based on this report, you can tell us exactly what work you want done. With transparent pricing and all-in packages for parts and labour, Expert Check takes the guesswork out of repairs and maintenance too.



SPARES AND REPAIRS

Even a John Deere needs repairs eventually. When the day comes, our dealers pull out all the stops to keep downtime to a minimum. With a state-of-the-art workshop and a fully trained technical team on hand, they can provide professional support being equipped with the latest updates directly from the factories. For smaller repairs you'd rather do yourself, they can supply everything you need overnight – even for older models.



ONE TRACTOR – ONE HUNDRED JOBS

Whatever the challenge, our tractors and attachments are built to do the job properly. We never sacrifice performance for versatility – and neither should you.





If you hate doing things by halves, you'll love John Deere Compact Utility Tractors. Instead of settling for a jack-of-all-trades solution, we go the extra mile to build machines that can master every challenge to professional standards. You'll see the difference every day – in a hundred different ways.



OUTSTANDING FEATURES



COMFORTGARD CAB

ComfortGard Cabs are designed for outstanding comfort all year round.

SOLID BASELINE

A robust chassis provides the platform for the toughest tasks, from towing large loads through to the shock resistance needed for loader work.



Independent PTO: Forget the days of stopping the tractor and manually engaging the PTO. With the electro-hydraulic PTO you can turn on your implement while you're on-the-go, so you can get your work done faster and easier.

1&2 SERIES – HYDROSTATIC TRANSMISSION

Hydrostatic transmission with Twin Touch pedals for ease of use and precise operation.

3&4 SERIES – eHYDRO AND POWRREVERSER TRANSMISSIONS

- eHydro provides a three range electronic hydrostatic transmission with effortless Twin Touch pedals.
- PowrReverser allows clutchless, hydraulic shifting between forward and reverse with a single lever.



Lift and Towing Hitches: A wide range of efficient and powerful lift and towing hitches for both the front and rear, increase the versatility of your tractor.



OPERATOR STATION

Work safely in a spacious, ergonomic environment.



4-WHEEL DRIVE & DIFFERENTIAL LOCK

Four wheel drive provides extra traction in challenging conditions and increased pulling power. A differential lock also delivers more on-the-go engagement.



Seeing is believing!
Watch products
and features videos
on our website.

COMFORTGARD CAB – 3R & 4R SERIES

Designed for outstanding comfort all year round, ComfortGard Cabs are fully sealed and pressurised to reduce the noise levels down to just 79 dB(A). The air conditioning and heating set new standards in performance and efficiency, while the high seat position and curved doors ensure a panoramic view in all directions. ComfortGard Cabs are standard on 4R and optional on the 3R models.



Seat of Power: The deluxe cloth seat keeps operators relaxed and focused all day for even more comfort on difficult terrain.



CAB – 1&2 SERIES

Spacious and well equipped with a deluxe cloth seat, large doors and integrated work lights. Offering excellent visibility and a compact design, which makes operating close to trees and other obstacles much safer.





INTUITIVE CONTROL LAYOUT & COLOUR-CODED DISPLAY

Innovative control console, ergonomic layout. Performance Tracking System: indicates status of machine vital system and helps monitor performance.



SERVICE ADVISOR

Intelligent machine diagnostics via Service ADVISOR technology ensure efficient, cost effective solutions to keep your machine operating at its optimum level.



LOADERS

When you need a loader, you need one that's been designed to work perfectly with the tractor and its hydraulic system. That's just what you get with John Deere. The H and R Series loaders offer the premium in performance and convenience with a Quik-Park mounting system and built in parking stands. The H180 even has the option of mechanical self-levelling where the bucket keeps your set angle during lifting and lowering. The D Series are fixed mounted loaders which are a great choice if your loader never leaves the tractor.

Quik-Park loader mounting system: H and R Series loaders are designed for easy, tool-free mounting and removal. The parking stand is attached to the front frame of the tractor, and becomes an integral part of the loader during loader operation. To drop the loader to the 'park' position, just lift the joystick after opening the latches.

	120R	120R	220R	300E	320R	400E	440R	
	1R SERIES	2026R	2036R	3E SERIES	3R SERIES	4M SERIES	4R SERIES	
Lift Capacity: The lift capacity at pivot pin is a gross measure of loader lifting ability.	Lift capacity at pivot point (max. height), kg (lb)	342 (754)	381 (840)	509 (1,120)	539 (1,186)	725 (1,598)	1,087 (2,391)	1,006 (2,213)
Lift and Reach: Consider how high and far you need a loader to reach. Do you need to load a truck, for instance?	Maximum lift height at pivot point, mm (in) Reach at max. height, mm (in)	1,828 (72) 626 (25)	1,828 (72) 626 (25)	2,160 (85) 756 (30)	2,140 (84) 603 (24)	2,593 (102) 562 (22)	2,850 (112) 705 (28)	2,796 (110) 755 (30)
Breakout Force: The higher the breakout force, the easier it is to fill the bucket.	Breakout force at pivot point, kgf (lbf)	826 (1,823)	911 (2,008)	886 (1,949)	775 (1,704)	1,480 (3,327)	1,714 (3,853)	1,710 (3,844)
Quik-Park loader	■	■	■		■		■	
Mechanical self levelling							■	

AUTOCONNECT MOWING DECKS

The John Deere AutoConnect Mowing Deck attaches in seconds, saving you time every time you mow. The deck and driveshaft automatically connects when you drive over it. Then when you're done, simply reverse back over to disconnect again – all from the comfort of your seat.



DRIVEOVER WITH AUTOCONNECT			
	54"	60"	72"
1026R	■	■	
2026R	■	■	
2036R		■	■
3033R		■	■
3038R		■	■
3045R		■	■

Choose your Width: Our mowing decks come in different widths, with an optional material collection system for even more flexibility.

MATERIAL COLLECTION SYSTEMS

Enhance your machine with the addition of a material collection system. The powerful fan assisted design delivers great results season after season.

580 L/H Collector: The 600 or 850 litre collector has optional high dumping and one-handed hydraulic operation for easy unloading.

345H Collector: The 800 or 1,200 litre high capacity collector keeps you productive for even longer. The 1.9 m dump height makes it easy to unload directly into a trailer. Available for 2020 and 3020 Series tractors.



MATERIAL COLLECTION SYSTEMS					
	MCS580L	MCS580H	MCS580L	MCS345H	MCS345H
	Low Dump 600ltr Capacity	High Dump 600ltr Capacity	Low Dump 850ltr Capacity	High Dump 800ltr Capacity	High Dump 1,200ltr Capacity
1R Series	■	■			
2R Series	■	■	■	■	
3R Series				■	■

1R SERIES

EXPERIENCE THE POSSIBILITIES

The 1026R Compact Utility Tractor offers perfect stability and ride comfort, and is easy to park and store. Designed for a wide range of tasks, this sub-compact tractor lets you switch tools or attachments easily and quickly. Standard features include a hydrostatic transmission, 4WD and power steering for smooth operation – plus a deluxe seat and suspension, tilt steering and deluxe lighting kit for all-day productivity.





EASY LIFT BONNET

The 1026R model now has an easy lift bonnet with standard twin gas-charged lift struts. Just flip the latch for wide-open access to the engine bay.

ENGINE

A reliable high torque 3 cylinder diesel engine with large cooling surface area for sustained performance.



TILT STEERING

Tilt steering lets you keep your arms in a natural position for less fatigue.



1026R

24.8 hp (18.5 kW) at 3,200 rpm
(SAE J1995 Power at rated speed)

24.8 hp (18.5 kW) at 3,200 rpm
(acc. ECE R-120)

Forward speed: 14.6 km/h

2 range Hydro / Two Pedal Automatic

Lift Capacity: 309 kg
(at 610 mm (24") behind lift ends)

Towing Capacity: 1,370 kg

Weight ROPs / Cab: 700 kg / 850 kg

Mid & Rear PTO

Optional:

- Front PTO
- Cab
- Mower Deck
- Material Collection System
- Front Loader
- Front Lift Hitch



QUALITY

The 1R Series tractor has spur gear final drives for durability, and wet disc brakes for no-nonsense stopping power.

2R SERIES

EXPERIENCE COMPACT VERSATILITY

Why compromise? Our versatile 2R Series tractors are easy to use and manoeuvre and offer all the big tractor stability and reliability you expect from John Deere. The liquid-cooled diesel engines deliver high power and speed, while the heavy-duty axles, 4WD and Category 1 Rear 3-point hitch are ideal for heavy work. Visibility and attachability are better than ever for continued productivity.



ENGINE

A compact 3 cylinder diesel engine has pulling power to spare and features an easy lift bonnet and side panels that can be removed without tools.



SMALL BUT ROBUST

Don't let the compact size fool you: just like its bigger brothers the 2R is built to be tough!

AUTO-THROTTLE / eTHROTTLE

Allows the machine to automatically increase or decrease engine speed as the operator presses on either of the Twin Touch pedals. Beneficial when transporting the machine on roadways because it allows the operator to keep both hands on the wheel and have full control of the machine with their feet. The increased efficiency also delivers improved fuel economy (Auto-throttle optional on 2026R, eThrottle standard on 2036R).



3 POINT FRONT HITCH

Compact and powerful for increased versatility of your machine. The 2036R even features an electric lock out valve activated easily from the operator's seat for secure transportation operation. Lift it, lock it, done!



COMMANDCUT

The 2036R features an electronic height of cut control for quick and accurate adjustment of the mower deck with the flip of a switch. Height of cut is shown in the operator display panel for convenience. Repeat operation is therefore simple.

COMFORTABLE CAB

With excellent all-round visibility and a really comfortable Air Suspension seat, our optional cab helps to keep the operator dry and warm to be focused all day long even in bad weather conditions.





REAR HITCH

This Category 1 Rear 3-pt Hitch can operate a wide range of implements. For even more versatility, order the optional front lift hitch.

ON ALL 2R SERIES MODELS

Mid & Rear PTO

Optional:

- Cab
- Front PTO
- Mower Deck
- Collection System
- Front Loader
- Front Lift Hitch



2026R

24.8 hp (18.5 kW) at 3,200 rpm
(SAE J1995 Power at rated speed)

24.8 hp (18.5 kW) at 3,200 rpm
(acc. ECE R-120)

Forward Speed: 21 km/h

2 range Hydro / Two Pedal Automatic

Lift capacity: 400 kg
(at 610 mm (24") behind lift ends)

Towing Capacity: 1,712 kg

Weight ROPS / Cab: 760 / 920 kg

2036R

37.1 hp (27.7 kW) at 2,600 rpm
(SAE J1995 Power at rated speed)

36.6 hp (27.3 kW) at 2,600 rpm
(acc. ECE R-120)

Forward Speed: 26.7 km/h

2 range Hydro / Two Pedal Automatic

Lift capacity: 615 kg
(at 610 mm (24") behind lift ends)

Towing Capacity: 2,500 kg

Weight ROPS / Cab: 1,100 / 1,325 kg

3E SERIES

EXPERIENCE A HIGH STANDARD

Why compromise on performance or capability? The 3038E Compact Utility Tractor is a simple, affordable machine that gets things done without making a fuss. The tight turning radius and great ergonomics make work easy – and the quality is John Deere through and through.





THE ALL ROUNDER

Our 3E Series tractors combine simplicity and ease of operation with 'big tractor' features like Twin Touch pedals and power assisted steering.

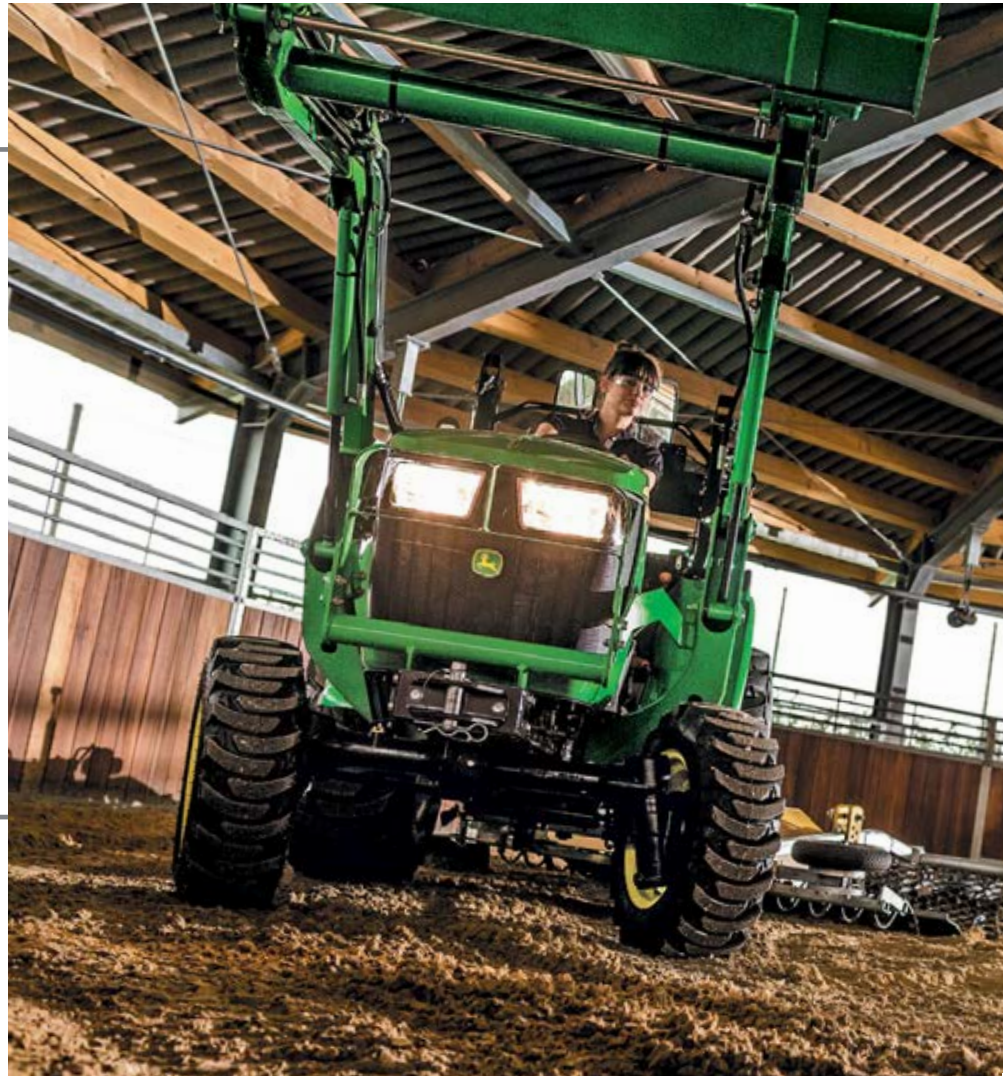


EASY ON/OFF ACCESS

Getting on and off is safe and easy thanks to the left-side step and the clear, unobstructed step-through platform with its non-slip surface.

NIMBLE PERFORMER

Even with a loader attached, the 3038E is a joy to manoeuvre in tight spots and confined spaces.



ENGINE

A reliable turbocharged engine with direct fuel injection for more efficient fuel consumption and improved starting in lower temperatures.



EASY LIFT BONNET

The 3038E model now has an easy lift bonnet with standard, twin, gas-charged lift struts. Just flip the latch for wide-open access to the engine bay.



3038E

37.1 hp (27.7 kW) at 2,600 rpm
(SAE J1995 Power at rated speed)

36.6 hp (27.3 kW) at 2,600 rpm
(acc. ECE R-120)

2 range Hydro / Two Pedal Automatic

Lift Capacity: 615 kg
(at 610 mm (24") behind lift ends)

Towing Capacity: 2,500 kg

Weight: 1,053 kg

Rear PTO

Optional:
– Fixed Front Loader



Category 1 Rear 3pt hitch: High Lift capacity to operate a wide variety of implements.



AG Tyres: When traction is more important than potential ground damage, specify our bar tread R1 agricultural tyres for uncompromising all-year pulling power.

3R SERIES

EXPERIENCE POWER MANAGEMENT

To help you use the power of your 3R Series tractors to the full, we fit a whole suite of advanced features as standard. These include 4WD, a digital performance tracking system and LoadMatch – an incredible electric engine power management system for peak performance in every application.



ENGINE

A 3 cylinder diesel engine provides a high torque reserve for impressive pulling power under load. The larger models are also turbocharged for increased performance.



MAXIMISE YOUR PRODUCTIVITY

Match your tractor's performance to the task in hand effortlessly with eHydro, our 3-range electronic transmission with Twin Touch pedals:

- **LoadMatch:** adjusts driving speed to engine load for maximum performance and no stalling.
- **MotionMatch:** adjusts transmission response instantly for adapted back-and-forth loading.
- **SpeedMatch:** sets a constant speed in 0.1 km/h steps during aeration / spraying or in confined spaces.
- **Cruise control:** set a ground speed and keep it, just like in your car.

STANDARD JOYSTICK WITH 3RD FUNCTION

Allows operation of front or mid mounted implements with an integrated 3rd function which is ideal when using an attachment like a multi function bucket on a loader.



eSCV – ELECTRICAL MIDMOUNT VALVE

This electro-hydraulic SCV system provides easy, precision control over mid/front mounted hydraulic functions. The selectable speed setting tunes the electronic joystick control to specific applications, while the '3rd function' buttons add flexibility on a wide range of jobs.



WET DISC BRAKES

The self-adjusting disc brakes are oil cooled to prevent fading and minimise wear.

SINGLE WHEEL BRAKES

Help to increase traction and allow even tighter turns.





eHYDRO OR POWRREVERSER TRANSMISSION

- eHydro provides an exclusive three range electronic hydrostatic transmission with comfortable (electrical) Twin Touch pedals
- PowrReverser provides a hydraulically shifted forward to reverse transmission, which allows clutchless shifting between forward and reverse with one lever (3038R only)

ON ALL 3R SERIES MODELS

- Mid Chassis
- Lift Capacity: 999 kg
(at 610 mm (24") behind lift ends)
- Towing Capacity: 4,000 kg
- Weight ROPS / Cab:
1,400 kg / 1,700 kg
- Mid & Rear PTO

- Optional:
- Front PTO
 - Mower Deck
 - Cab
 - Front Loader
 - eSCV
 - Front Lift Hitch



3033R

32.5 hp (24.2 kW) at 2,600 rpm
(SAE J1995 Power at rated speed)

32.3 hp (24.1 kW) at 2,600 rpm
(acc. ECE R-120)

Two Pedal E-Hydro Transmission

3038R

37.1 hp (27.7 kW) at 2,600 rpm
(SAE J1995 Power at rated speed)

36.6 hp (27.3 kW) at 2,600 rpm
(acc. ECE R-120)

Transmission Options:

Two Pedal E-Hydro Transmission

ePRT (PowrReverser Transmission)

3045R

44 hp (32.8 kW) at 2,600 rpm
(SAE J1995 Power at rated speed)

44 hp (32.8 kW) at 2,600 rpm
(acc. ECE R-120)

Two Pedal E-Hydro Transmission

4M SERIES

EXPERIENCE THE VALUE

The 4M Series gives you the power and control of a fully grown farm tractor. With a 4-cylinder diesel engine, an eHydro transmission, 4WD and a new, intuitive control console at your command, you have everything you need to tackle a wide range of jobs effectively and easily.





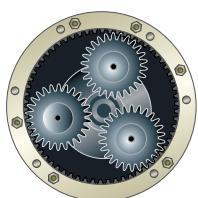
POWR REVERSER

The PowrReverser gear transmission is ideal for loader work. Just move a lever to shift smoothly between forward and reverse – no clutch required.



AG TYRES

For uncompromising all-year grip and pulling power, specify these bar-tread R1 agricultural tyres.



PLANETARY GEARS

This is the same final drive layout we fit in our bigger tractors. It improves reliability by spreading the load over three gears.

ENGINE

Powerful 4 cylinder diesel engine with high torque reserve and designed to run quietly. The direct injection delivers fast starts, even in cold temperatures and runs clean, meeting the European emission standards. In addition, the 4066M features a diesel particulate filter for reduced engine emissions.

ON ALL 4M SERIES MODELS

- Large Chassis
- Lift Capacity: 1,134 kg
(at 610 mm (24") behind lift ends)
- Towing Capacity: 5,000 kg
- Weight: 1,710 kg
(empty with ROPS)
- Rear PTO

- Optional:
- Front PTO
 - Fixed Front Loader
 - Front Lift Hitch
 - Wheelspacers



4049M

48.3 hp (36 kW) at 2,600 rpm
(SAE J1995 Power at rated speed)

48.5 hp (36.2 kW) at 2,600 rpm
(acc. ECE R-120)

Transmission Options:

Two Pedal E-Hydro Transmission

ePRT (PowrReverser Transmission)

4066M

65 hp (48.5 kW) at 2,600 rpm
(SAE J1995 Power at rated speed)

65 hp (48.5 kW) at 2,600 rpm
(acc. ECE R-120)

Transmission Options:

Two Pedal E-Hydro Transmission

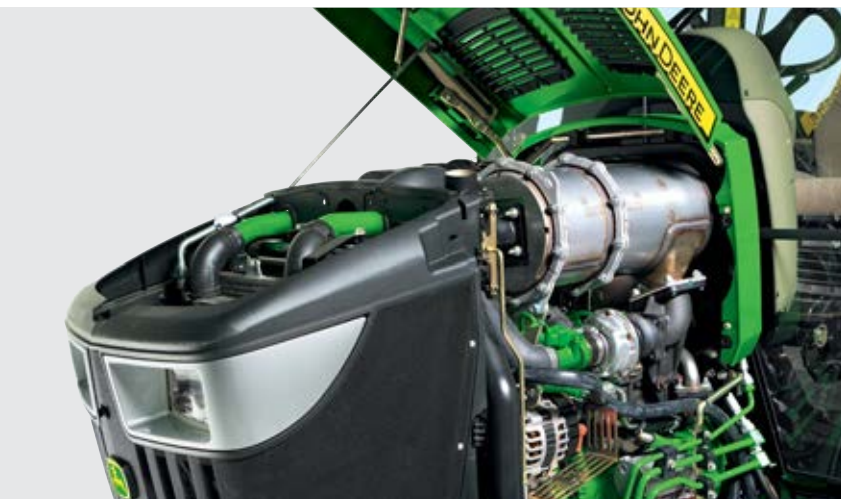
ePRT (PowrReverser Transmission)

4R SERIES

EXPERIENCE PREMIUM COMFORT & OPERATION

Our premium 4R Series tractors are specially designed to make life easier! LoadMatch eliminates stalling by automatically matching engine speed to the engine load. Standard Hitch Assist makes the rear hitch faster to use and safer. The optional self-levelling Quik-Park loader attaches in less than three minutes, and the standard Air Ride seat keeps you comfortable and productive all day long.





COMMON RAIL ENGINE & DIESEL PARTICULATE FILTER

Intelligent common rail engines control fuel injection timing and provide precise control for the start, duration and end of injection for increased performance. In addition, the 4066R features a diesel particulate filter for reduced engine emissions.



MAXIMISE YOUR PRODUCTIVITY

Match your tractor's performance to the task in hand effortlessly with eHydro, our 3-range electronic transmission with Twin Touch pedals:

- **LoadMatch:** adjusts driving speed to engine load for maximum performance and no stalling.
- **MotionMatch:** adjusts transmission response instantly for adapted back-and-forth loading.
- **SpeedMatch:** sets a constant speed in 0.1km/h steps during aeration / spraying or in confined spaces.
- **Cruise control:** set a ground speed and keep it, just like in your car.



eSCV – ELECTRICAL MIDMOUNT VALVE

This electro-hydraulic SCV system provides easy, precision control over mid/front mounted hydraulic functions. The selectable speed setting tunes the electronic joystick control to specific applications, while the '3rd function' buttons add flexibility on a wide range of jobs.



STANDARD JOYSTICK WITH 3RD FUNCTION

Ergonomically located integrated joystick for maximum control and comfort during operation of front or mid-mounted implements. It also features an integrated 3rd function which is ideal when using a multi-function bucket etc. The 4th and 5th function have independent controls providing additional versatility.

POWERFUL HYDRAULICS

Large hydraulic pumps ensure responsive steering, fast loading cycles and effortless work. You can even apply optional down pressure on the 3-point hitch when drilling post holes.

DOWNFORCE KIT

The optional 3-point hitch downforce kit allows an extra 500 lb (226.8 kg) of downward force to be applied to the lower 3-point hitch arms to push an implement through hard and compacted soil. This is especially useful in posthole digging, tilling applications, and rear blade work.

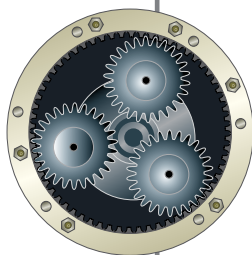


WET DISC BRAKES

The self-adjusting disc brakes are oil cooled to prevent fading and minimise wear.

SINGLE WHEEL BRAKES

Help to increase traction even in very rough conditions and allow even tighter turns.



PLANETARY GEARS

This is the same final drive layout we fit in our bigger tractors. It improves reliability by spreading the load over three gears.

HITCH ASSIST

Couple attachments to the rear hitch quickly and safely with this intelligent feature which allows the operator to stand at the rear of the tractor and move the entire machine forward and backwards in addition to lifting and lowering the rear hitch. Simple, safe and effective.



ON ALL 4R SERIES MODELS

- Large Chassis
- Lift Capacity: 1,134 kg
(at 610 mm (24") behind lift ends)
- Towing Capacity: 5,000 kg
- Weight: 2,120 kg
- Rear PTO
- ComfortGard Cab
- Hitch assist

Optional:

- Front PTO
- Front Lift Hitch
- Front Loader



4049R

48.3 hp (36 kW) at 2,600 rpm
(SAE J1995 Power at rated speed)

48.5 hp (36.2 kW) at 2,600 rpm
(acc. ECE R-120)

Two Pedal E-Hydro Transmission

ComfortGard Cab

4066R

65 hp (48.5 kW) at 2,600 rpm
(SAE J1995 Power at rated speed)

65 hp (48.5 kW) at 2,600 rpm
(acc. ECE R-120)

Two Pedal E-Hydro Transmission

ComfortGard Cab

ATTACHMENTS



FRONT HITCH

1 3 Point Front Hitch

With an A frame for fast changing of generic implements.

2 JD Quick Hitch

Change between John Deere implements in no time.

3 JD Quick Hitch Broom

For easy removal of light snow or to clean up surrounds.

4 JD Quick Hitch Blade

For snow removing or grading.

5 PTO

Different Speed and Turning directions available to suit application.

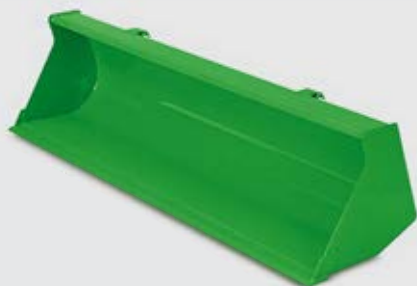
REAR HITCH

6 Height Adjustable Rear Towing Hitch

Easy to use height adjustments for all trailers with clevis and ball type.

7 Towing Hitch

A trailer or other towed implement can be connected to the tractor at a comfortable height if the top link mounted rear wagon hitch is equipped.



8

BUCKETS

8 Materials Buckets

Load dirt, gravel and feed. Round-back bucket design provides superior material filling and emptying.

Heavy Duty Buckets

Designed for heavier applications, this bucket features additional wear bars, bucket end plate supports and pre-drilled holes for replacing the cutting edges. (Bucket loop option on 1,850 mm heavy duty bucket)

High Volume Buckets

The perfect match for moving a large capacity of light material such as snow, sawdust, mulch and feed.



9

9 Tooth Bars

Easily penetrate hard-packed material. Slide tooth bar over cutting edge to attach.



10

10 Replaceable Cutting Edges

Recommended for commercial operations and rental customers. Reinforced and reversible for longer wear life. Not compatible with tooth bars.

WEIGHT

11 Front Weights

Individual weights with integrated handles for easy attaching and removal.

12 Rear Wheel Weights

For improved traction and balance on slippery terrain, for example when loading or when removing snow.

13 Ballast Boxes

Enhance loader performance in all conditions with correct ballasting. Order a ballast box extension to add even more ballasting to the rear.

14 Quik-Tatch Weights

Ballasting is made easy with these individual weights. Moulded-in handles make installation and removal easy.



11



12



13



14



1

HYDRAULICS

The hydraulic system makes easy work of powering PTOs, hitches and front loaders. Get the most out of your tractor by adding optional attachments if they are not already standard on the machine.*



2

1 Hydraulic Rear Couplers

Quickly and effortlessly remove your hydraulic hook-ups with these couplers.

2 Diverter Kit

Divert power to the rear of your tractor with this convenient toggle switch. Engage to hydraulically operate rear implements with your loader joystick. Disengage to transfer power back to the front implements. Footplate to 4 extra couplers at the rear of the tractor.



3

3 Power Beyond

Get power to the rear of your tractor in order to operate attachments that contain a control valve such as a backhoe, log splitter or snowblower.

4 Fourth and Fifth SCV-kits

Provides two additional pairs of rear SCVs. The kit can be field installed with or without a loader. The functions are completely separate from the loader.

* All dependent on model type. Speak to your dealer for specific information



4

LIGHTS

5 Rear Work Lights

Shed some light especially when working with rear implements.

6 Forward Lighting Kit

Enjoy increased visibility up front when working in dark conditions. Two lights mount to brush guards located on the Roll Over Protection Structure. (Forward lighting kit standard on cab units)*

7 Beacon Light

For added safety enhance visibility with this amber-coloured, rotating high-intensity light.



5



6



7



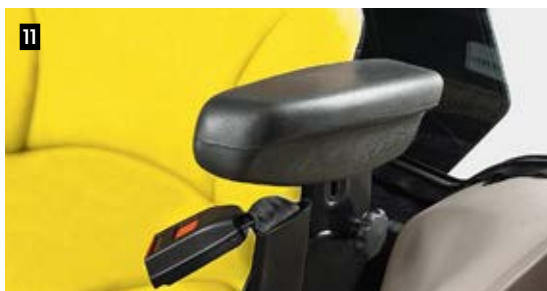
8



10



9



11

MISCELLANEOUS

8 Cruise control

Set a ground speed and keep it.

9 External Tool Boxes

A convenient place to hold all of your tools. This heavy duty steel box can easily be installed in three different tractor areas.

10 Vertical Exhausts

Direct exhaust up and over the operator's head. The perfect choice for exhaust-sensitive applications such as certain vegetation.

11 Armrest Kit

Armrests provide additional support and comfort for long days in the seat. Pivot armrest up and out of the way when exiting tractor. (Armrest kit standard on seat with cab units)



12

SAFETY

12 Back-up Alarm Kit*

Alert bystanders when you are reversing with this audible alarm that sounds when the tractor is in reverse.

13 Data Tag

To help prevent the increasing number of tractor thefts, all tractors for selected countries will be fitted from the warehouse with the official CESAR datatag system.

* Not for Power Reverser Transmission



13



TYRES

1 RI AG

For agricultural style application.

2 R3 Turf

For mowing, choose turf tread R3 tyres with their less aggressive pattern.

3 R3 Turf Special

For fine turf or golf courses, choose these R3 special golf tyres.

4 R3 Turf Radial

Also for fine turf or golf applications.

5 R4 Industrial

For a good mix of traction and ground care, consider this all-year-round solution.

6 Tyre Chains

Front and rear chains easily slip over tractor tyres to provide essential traction in slippery conditions like snow and ice.



FENDER

7 Front Fenders

Help to protect against unwanted dirt and mud on cab glass or operator station.

8 Rear Fender Extensions

Help to keep debris from the rear tyres off of you, your tractor and your implements.



HOOD GUARD

9 Hood Guard

Protect your grille from brush, debris and those inevitable knocks during dumping or loading.

10 Deluxe Hood Guards*

Enjoy increased protection to the front and side of your grille. The hood guard's wrap-around design combined with mesh front provides superior protection from debris and brush.



* Not road legal

FIND WHAT FITS

	1R SERIES	2R SERIES	3E SERIES	3R SERIES	4M SERIES	4R SERIES
Front Hitch w/ PTO	■	■		■	■	■
JD Quick Hitch	■	■ (2026R only)				
JD Quick Hitch Broom		■ (2026R only)				
JD Quick Hitch Blade	■	■ (2026R only)				
Wagon Hitch	■	■	■	■	■	■
Back-up Alarm				■	■	Standard
Rear Work Light	■	■		■		■
Additional Hydraulics	■	■	■	■	■	■
R1 AG Tyres		■ (2036R only)	■	■	■	■
R1 AG Radial Tyres			■		■	■
R3 Turf Tyres	■	■	■	■	■	■
R3 Turf Special Tyres				■	■	■
R3 Turf Radial Tyres		■				
R4 Industrial Tyres	■	■	■	■	■	■
Front Fenders				■	■	■
Rear Fender Extensions				■		■
Front Weights	■	■	■	■	■	■
Rear Wheel Weights	■	■	■	■	■	■
Hood Guard	■	■	■	■	■	■

SPECIFICATIONS



1026R		
1R SERIES		
ENGINE		
Type	3-Cylinder Diesel	
SAE J1995 Gross engine power at rated speed kW (hp) <small>(Performance obtained and corrected in accordance with SAE J1995® Revised December, 2013)</small>	18.5 (24.8) at 3,200	
ECE-R120 Net bare engine power at rated engine rpm kW (hp)	18.5 (24.8) at 3,200	
ECE-R24 Net bare engine power at rated engine rpm kW (hp)	17.5 (23.5) at 3,200	
Rated PTO kW (hp)	13.4 (18)	
Displacement, ltr	1.115	
Max Torque, Nm at rpm	63.7 at 1,900	
Air Cleaner	Dry Type w/ Safety Element	
Fuel Tank Capacity, ltr	21.2	
DRIVETRAIN		
Transmission – Gear	N/A	
Transmission – Hydro	2 range Hydro / Two Pedal Automatic	
Max. Speed, km/h (mph)	14.6 (9.1)	
Clutch PowrReverser	N/A	
Brakes	Wet Disc	
Steering	Power Steering	
Differential Lock	Standard	
4-Wheel Drive	Standard	
HYDRAULIC SYSTEM		
Type	Open Centre	
Total Flow, l/min	24	
Implement, l/min	13.2	
Steering, l/min	10.8	
HITCH		
Category 1 Rear 3pt Hitch	Standard	
Lift Capacity at Lift Points, kg	525	
Lift Capacity 610 mm (24") Behind Lift Ends, kg	309	
PTO		
Type	Independent	
Location	Standard Rear, Mid Standard and Front Optional	
Speed	540 Rear	
Rotation	2100CCW Mid and Front	
Clutch / Brake	Wet Multi Disc	
SAFETY		
ROPS / Cab	Complies with ASAE, OSH Standards	
Driver Safety System		
– PTO Brake	Standard	
– Operator Present	Standard	
DIMENSIONS		
Total Length with 3pt Hitch, mm	2,846	
Total Width, mm	1,200	
Wheelbase, mm	1,450	
Height with ROPS, mm	2,280	
Height with Cab, mm	1,985	
Weight Empty with ROPS / with Cab, kg	700 / 850	
Total Permissible Weight, kg	1,327	
Front Axle, kg	612	
Rear Axle, kg	715	
Towing Capacity, kg	1,370	
TYRES		
R1 AG	– Front – Rear	– –
R1 AG	– Front – Rear	– –
R3 TURF	– Front – Rear	18 × 8.5 – 10 4PR 26 × 12 – 12 4PR
R3 TURF Special	– Front – Rear	– –
R3 TURF Radial	– Front – Rear	– –
R4 Industrial	– Front – Rear	18 × 8.5 – 10 4PR 26 × 12 – 12 4PR
R4 Industrial	– Front – Rear	– –



2026R

2036R

2R SERIES

3-Cylinder Diesel
18.5 (24.8) at 3,200

3-Cylinder Diesel, Turbocharged
27.7 (37.1) at 2,600

18.5 (24.8) at 3,200

27.3 (36.6) at 2,600

17.5 (23.5) at 3,200

26.8 (35.9) at 2,600

13.4 (18)

22 (30)

1.115

1.5

63.7 at 1,900

120 at 1,800

Dry Type w/ Safety Element

Dry Type w/ Safety Element and restriction indicator light

24

32

N/A

N/A

2 range Hydro / Two Pedal Automatic

2 range Hydro / Two Pedal Automatic

21 (13)

26.7 (16.6)

no

no

Wet Disc

Wet Disc

Power Steering

Power Steering

Standard

Standard

Standard

Standard

Open Centre

Open Centre

28

35.2

14

20.2

14

15

Standard

Standard

560

946

400

615

Independent

Independent

Standard rear, Mid Standard and Front Optional

Standard rear, Mid Standard and Front Optional

540 rear

540 rear

2100CCW Mid and Front

2100CCW Mid and Front

Wet Multi Disc

Wet Multi Disc

Complies with ASAE, OSH Standards

Complies with ASAE, OSH Standards

Standard

Standard

Standard

Standard

2,808

2,875

1,200–1,280

1,280–1,400

1,600

1,725

2,364

2,370–2,380

1,995–2,005

2,135–2,145

760 / 920

1,100 / 1,325

1,712

2,400

612

880

1,100

1,800

1,712

2,500

–

7.00 – 12 4PR

–

12.4 – 16 6PR

–

–

–

–

210 / 65 – R12 4PR

23 × 8.5 – 14 6PR

345 / 60 – R15 4PR

14 – 17.5 6PR

–

–

–

–

220 / 55 – 12 4PR

200 / 60R15

280 / 70 – 16 4PR

300 / 70R20

210 / 65 – R12 4PR

23 × 8.5 – 14 6PR

310 / 70 – R16.5 4PR

14 – 17.5 6PR

–

–

–

–



		3038E	3033R
		3E SERIES	3R SERIES
ENGINE			
Type		3-Cylinder Diesel, Turbocharged	3-Cylinder Diesel
SAE J1995 Gross engine power at rated speed kW (hp) (Performance obtained and corrected in accordance with SAE J1995® Revised December, 2013)		27.7 (37.1) at 2,600	24.2 (32.5) at 2,600
ECE-R120 Net bare engine power at rated engine rpm kW (hp)		27.3 (36.6) at 2,600	24.1 (32.3) at 2,600
ECE-R24 Net bare engine power at rated engine rpm kW (hp)		26.8 (35.9) at 2,600	23.1 (31) at 2,600
Rated PTO kW (hp)		22 (29.5)	19 (25)
Displacement, ltr		1.5	1.6
Max Torque, Nm at rpm		120 at 1,800	107 at 1,200
Air Cleaner		Dry Type w/ Safety Element and Restriction Indicator Light	Dry Type w/ Safety Element and Restriction Indicator Light
Fuel Tank Capacity, ltr		28.5	Open Station – 51 / Cab – 45
DRIVETRAIN			
Transmission – Gear		N/A	N/A
Transmission – Hydro		Two Pedal Hydro Transmission	Two Pedal E-Hydro Transmission
Max. Speed, km/h (mph)		24.9 (15.5)	30.6 (19)
Clutch PowrReverser		N/A	N/A
Brakes		Wet Disc	Wet Disc
Steering		Power Steering	Power Steering
Differential Lock		Standard	Standard
4-Wheel Drive		Standard	Standard
HYDRAULIC SYSTEM			
Type		Open Centre	Open Centre
Total Flow, l/min		35.2	52.5
Implement, l/min		20.2	32.5
Steering, l/min		15	20
HITCH			
Category 1 Rear 3pt Hitch		Standard	Standard
Lift Capacity at Lift Points, kg		N/A	1,148
Lift Capacity 610 mm (24") Behind Lift Ends, kg		615	999
PTO			
Type		Independent	Independent
Location		Standard Rear	Standard Rear, Mid* Standard and Front Optional
Speed		540 Rear	540 Rear
Rotation		N/A	1000CW, 1000CCW or 2100CCW All Engine Driven
Clutch / Brake		Wet Multi Disc	Wet Multi Disc
SAFETY			
ROPS / Cab		Complies with ASAE, OSH Standards	Complies with ASAE, OSH Standards
Operator Safety System			
– PTO Brake		Standard	Standard
– Operator Present		Standard	Standard
DIMENSIONS			
Total Length with 3pt Hitch, mm		2,945	3,230
Total Width, mm		1,446	1,323–1,728
Wheelbase, mm		1,595	1,727
Height with ROPS, mm		2,422	2,332–2,370
Height with Cab, mm		N/A	2,257–2,278
Weight Empty with ROPS / with Cab, kg		1,053	1,400 / 1,700
Total Permissible Weight, kg		2,000	3,180
Front Axle, kg		880	1,450
Rear Axle, kg		1,200	2,000
Towing Capacity, kg		2,500	4,000
TYRES			
R1 AG	– Front	7 – 14 6PR	7.00 – 14 6PR
	– Rear	11.2 – 24 6PR	11.2 – 24 6PR
R1 AG	– Front	200 / 70R16	–
	– Rear	320 / 70R24	–
R3 TURF	– Front	27 × 8.5 – 15 4PR	27 × 8.50 – 15 6PR
	– Rear	41 × 14 – 20 4PR	41 × 14 – 20 6PR
R3 TURF Special	– Front	–	25 × 10.50LL – 15 6PR
	– Rear	–	41LL × 18 – 16.1 6PR
R3 TURF Radial	– Front	–	25 × 10.50LL – 15 6PR
	– Rear	–	41LL × 18 – 16.1 6PR
R4 Industrial	– Front	25 × 8.5 – 14 4PR	25 × 8.5 – 14 6PR
	– Rear	15 – 19.5 4PR	15 – 19.5 6PR
R4 Industrial	– Front	27 × 8.50 – 15 4PR	27 × 8.5 – 15 6PR
	– Rear	43 × 16 – 20 4PR	43 × 16.00 – 20 4PR

* On PowrReverser Optional



3038R



3045R

3-Cylinder Diesel, Turbocharged
27.7 (37.1) at 2,600

27.3 (36.6) at 2,600

26.6 (35.7) at 2,600

23 (30)

1.5

116 at 1,400

Dry Type w/ Safety Element
and Restriction Indicator Light

Open Station – 51 / Cab – 45

3-Cylinder Diesel, Turbocharged / Intercooler
32.8 (44.0) at 2,600

32.8 (44) at 2,600

31.7 (42.5) at 2,600

26 (35)

1.5

137 at 1,560

Dry Type w/ Safety Element
and Restriction Indicator Light

Open Station – 51 / Cab – 45

12 × 12 PowrReverser

Two Pedal E-Hydro Transmission

30.6 (19)

Wet Multi-Disc

Wet Disc

Power Steering

Standard

Standard

N/A

Two Pedal E-Hydro Transmission

30.6 (19)

N/A

Wet Disc

Power Steering

Standard

Standard

Open Centre

52.5

32.5

20

Open Centre

52.5

32.5

20

Standard

1,148

999

Standard

1,148

999

Independent

Standard Rear, Mid* Standard and Front Optional

540 Rear

1000CW, 1000CCW or 2100CCW All Engine Driven

Wet Multi Disc

Independent

Standard Rear, Mid* Standard and Front Optional

540 Rear

1000CW, 1000CCW or 2100CCW All Engine Driven

Wet Multi Disc

Complies with ASAE, OSH Standards

Complies with ASAE, OSH Standards

Standard

Standard

Standard

Standard

3,230

1,323 – 1,728

1,727

2,332 – 2,370

2,257 – 2,278

1,400 / 1,700

3,180

1,450

2,000

4,000

3,230

1,323 – 1,728

1,727

2,332 – 2,370

2,257 – 2,278

1,400 / 1,700

3,180

1,450

2,000

4,000

7.00 – 14 6PR

11.2 – 24 6PR

–

–

27 × 8.50 – 15 6PR

41 × 14 – 20 6PR

25 × 10.50LL – 15 6PR

41LL × 18 – 16.1 6PR

25 × 10.50LL – 15 6PR

41LL × 18 – 16.1 6PR

25 × 8.5 – 14 6PR

15 – 19.5 6PR

27 × 8.5 – 15 6PR

43 × 16.00 – 20 4PR

7.00 – 14 6PR

11.2 – 24 6PR

–

–

27 × 8.50 – 15 6PR

41 × 14 – 20 6PR

25 × 10.50LL – 15 6PR

41LL × 18 – 16.1 6PR

25 × 10.50LL – 15 6PR

41LL × 18 – 16.1 6PR

25 × 8.5 – 14 6PR

15 – 19.5 6PR

27 × 8.5 – 15 6PR

43 × 16.00 – 20 4PR



		4049M	4066M
		4M SERIES	
ENGINE			
Type		4-Cylinder Diesel Turbocharged	4-Cylinder Diesel Turbocharged/ Intercooler with Diesel Particulate Filter
SAE J1995 Gross engine power at rated speed kW (hp) (Performance obtained and corrected in accordance with SAE J1995* Revised December, 2013)		36 (48.3) at 2,600	48.5 (65.0) at 2,600
ECE-R120 Net bare engine power at rated engine rpm kW (hp)		36.2 (48.5) at 2,600	48.5 (65) at 2,600
Rated Engine kW (hp), ECE-R24 at Engine rpm		33.5 (44.9) at 2,600	46.6 (62.5) at 2,600
Rated PTO kW (hp)		27.5 (36.9)	40.2 (54)
Displacement, ltr		1.995	2.091
Max Torque, Nm at rpm		156 at 1,700	207 at 1,690
Air Cleaner		Dry Type, Two Stage	Dry Type, Two Stage
Fuel Tank Capacity, ltr		Open Station – 49.2	Open Station – 49.2
DRIVETRAIN			
Transmission – Gear		12 × 12 PowrReverser	12 × 12 PowrReverser
Transmission – Hydro		Two Pedal E-Hydro Transmission	Two Pedal E-Hydro Transmission
Max. Speed, km/h (mph)		32.8 (20.3)	32.8 (20.3)
Clutch PowrReverser		Wet Disc	Wet Disc
Brakes		Wet Disc	Wet Disc
Steering		Power Steering	Power Steering
Differential Lock		Standard	Standard
4-Wheel Drive		Standard	Standard
HYDRAULIC SYSTEM			
Type		Open Centre	Open Centre
Total Flow, l/min		60.2	60.2
Implement, l/min		38.7	38.7
Steering, l/min		21.5	21.5
HITCH			
Category 1 Rear 3pt Hitch		Standard	Standard
Lift Capacity at Lift Points, kg		1,420	1,420
Lift Capacity 610 mm (24") Behind Lift Ends, kg		1,134	1,134
PTO			
Type		Independent	Independent
Location		Standard Rear / Front Optional	Standard Rear / Front Optional
Speed		540 Rear	540 Rear
Rotation		1000CW, 1000CCW or 2100CCW All Engine Driven	1000CW, 1000CCW or 2100CCW All Engine Driven
Clutch / Brake		Wet Disc	Wet Disc
SAFETY			
ROPS / Cab		Complies with ASAE, OSH Standards	Complies with ASAE, OSH Standards
Driver Safety System			
– PTO Brake		Standard	Standard
– Operator Present		Standard	Standard
DIMENSIONS			
Total Length with 3pt Hitch, mm		3,318	3,318
Total Width, mm		1,806 – 1,987	1,806 – 1,987
Wheelbase, mm		1,854	1,854
Height with ROPS, mm		2,545	2,545
Height with Cab, mm		N/A	N/A
Weight Empty with ROPS / with Cab, kg		1,710 / N/A	1,710 / N/A
Total Permissible Weight, kg		4,000	4,000
Front Axle, kg		1,600	1,600
Rear Axle, kg		2,400	2,400
Towing Capacity, kg		5,000	5,000
TYRES			
R1 AG	– Front	8.00 – 16	8.00 – 16
	– Rear	13.6 – 28	13.6 – 28
R1 AG Radial	– Front	280 / 70R16	280 / 70R16
	– Rear	380 / 70R28	380 / 70R28
R3 TURF	– Front	27 × 10.50 – 15	27 × 10.50 – 15
	– Rear	44 × 18.00 – 20	44 × 18.00 – 20
R3 TURF Special	– Front	27 × 12LL – 15	27 × 12LL – 15
	– Rear	22.5LL – 16.1	22.5LL – 16.1
R4 Industrial	– Front	10.00 – 16.5	10.00 – 16.5
	– Rear	16.9L – 24	16.9L – 24
R4 Industrial	– Front	–	–
	– Rear	–	–

* On PowrReverser Optional



4049R

4R SERIES



4066R

4-Cylinder Diesel
Turbocharged

36 (48.3) at 2,600

36.2 (48.5) at 2,600

33.5 (44.9) at 2,600

27.5 (36.9)

1.995

156 at 1,700

Dry Type, Two Stage

Cab – 52

N/A

Two Pedal E-Hydro Transmission

32.8 (20.3)

N/A

Wet Disc

Power Steering

Standard

Standard

Open Centre

60.2

38.7

21.5

Standard

1,420

1,134

Independent

Standard Rear / Front Optional

540 Rear

1000CW, 1000CCW or 2100CCW All Engine Driven

Wet Disc

Complies with ASAE, OSH Standards

Standard

Standard

3,318

1,806 – 1,987

1,854

N/A

2,474

N/A / 2,120

4,000

1,600

2,400

5,000

8.00 – 16

13.6 – 28

280 / 70R16

280 / 70R16

27 × 10.50 – 15

44 × 18.00 – 20

27 × 12LL – 15

22.5LL – 16.1

10.00 – 16.5

16.9L – 24

–

–

4-Cylinder Diesel
Turbocharged / Intercooler with Diesel Particulate Filter

48.5 (65.0) at 2,600

48.5 (65) at 2,600

46.6 (62.5) at 2,600

40.2 (54)

2.091

207 at 1,690

Dry Type, Two Stage

Cab – 52

N/A

Two Pedal E-Hydro Transmission

32.8 (20.3)

N/A

Wet Disc

Power Steering

Standard

Standard

Open Centre

60.2

38.7

21.5

Standard

1,420

1,134

Independent

Standard Rear / Front Optional

540 Rear

1000CW, 1000CCW or 2100CCW All Engine Driven

Wet Disc

Complies with ASAE, OSH Standards

Standard

Standard

3,318

1,806 – 1,987

1,854

N/A

2,474

N/A / 2,120

4,000

1,600

2,400

5,000

8.00 – 16

13.6 – 28

380 / 70R28

380 / 70R28

27 × 10.50 – 15

44 × 18.00 – 20

27 × 12LL – 15

22.5LL – 16.1

10.00 – 16.5

16.9L – 24

–

–

THE 5R

COMPACT CAN DO MORE



This literature has been compiled for worldwide circulation. While general information, pictures and descriptions are provided, some illustrations and text may include finance, credit, insurance, product options and accessories not available in all regions. Please contact your local dealer for details. John Deere reserves the right to change specification and design of products described in this literature without notice. The green and yellow colour scheme, the leaping deer logo and the JOHN DEERE word mark are trademarks of Deere & Company.